



Highway 55 at County Road 116/CSAH 115 Project Newsletter

Volume 1, Issue 1

August 2009

Introduction

The City of Medina has been working on a plan to make improvements to the Highway 55 and CR 116/CSAH 115 intersection for the last several years. Following meetings with local businesses, Mn/DOT, and Hennepin County officials, a concept plan was approved by the Medina City Council on November 18, 2008, which addresses the current safety and capacity issues as well as planning for future traffic demands at this intersection.

Both Mn/DOT and Hennepin County are in general agreement with the proposed concept. The project will involve replacing the existing signal system, construction of raised medians, access modifications and the construction of a backage road (Clydesdale Trail) on the north side of Highway 55. A new signal system at Clydesdale Trail and CR116 is also being proposed and is under review.

Project Purpose and Need

The purpose of this project is to improve safety and traffic flow through the Highway 55 and CR 116/CSAH 115 intersection, which is currently experiencing safety, capacity and mobility issues. Specific needs are listed below:

- **Transportation Demand/Capacity** – Traffic volumes on CR 116 were at 9,250 vehicles per day in 2007 and traffic volumes along Highway 55 were at 27,500 vehicles per day in 2008. MnDOT has estimated that traffic volumes at the intersection are expected to increase by approximately 40% over the next 20 years.
- **Safety** – A significant number of rear-end crashes result from drivers entering or exiting TH 55 to/from CR 116/CSAH 115. With the increase in traffic over the next 20 years crashes are likely to significantly increase at the intersection as well as at the direct accesses located on Highway 55 and CR 116.

- **Geometric Deficiencies** – The existing geometrics consist of a single left turn lane for vehicles traveling south to turn east onto TH 55. This causes congestion and therefore, significant delays for vehicles during the A.M. peak traffic period both on Highway 55 and CR 116.

What Has Been Done So Far:

Hennepin County has completed an Environmental Assessment (EA) for the Highway 55 corridor from I-494 in Plymouth to the Crow River in Rockford. Medina developed the proposed intersection concept plan during the EA process and will use the EA as part of the environmental review for the intersection reconstruction project.

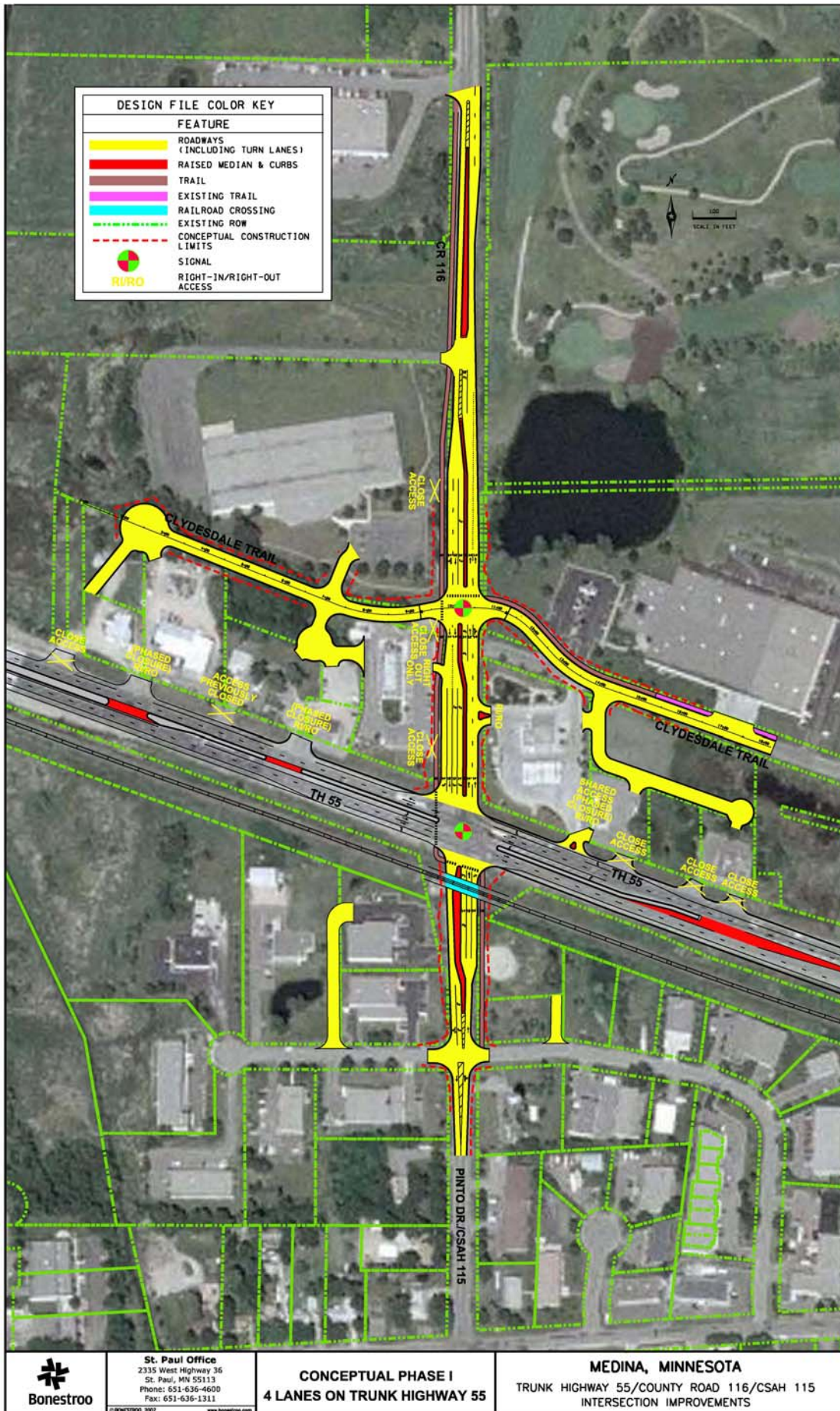
What is the Next Step:

The City has received Federal funding from the Highway 55 Corridor Coalition to begin implementation of the project. The initial funding is available for completing the environmental review, design, and right of way acquisition. The City is currently in the process of working with Hennepin County to administer the federal funds and hire a consultant to keep the project moving forward.

The proposed project schedule is to begin construction in the fall of 2010. However, the construction project is not fully funded at this time and will require additional federal funding. Project updates or upcoming meetings will be included in the next newsletter in a few months.

Contact Information:

Jodi Gallup
Assistant to the City Administrator
2052 County Road 24
Medina, MN 55340
Phone: 763-473-4643
E-mail: Jodi.Gallup@ci.medina.mn.us



St. Paul Office
 2335 West Highway 36
 St. Paul, MN 55113
 Phone: 651-636-4600
 Fax: 651-636-1311

CONCEPTUAL PHASE I
 4 LANES ON TRUNK HIGHWAY 55

MEDINA, MINNESOTA
 TRUNK HIGHWAY 55/COUNTY ROAD 116/CSAH 115
 INTERSECTION IMPROVEMENTS

PL01DATE: 11/12/2008