

# **BRAUN** **INTERTEC**

**Braun Intertec Corporation**  
11001 Hampshire Avenue S.  
Minneapolis, MN 55438

Phone: 952.995.2000  
Fax: 952.995.2020  
Web: braunintertec.com

Mr. Jeremy Hansen  
Braun Intertec-Bloomington  
11001 Hampshire Ave. South  
Bloomington, MN 55438

May 27, 2010

Report #: 1002579

RE: Holasek Property, Medina MN  
BL-10-06413

Dear Jeremy Hansen:

Braun Intertec Corporation received samples for the project identified above on May 20, 2010. Analytical results are summarized in the following report.


All routine quality assurance procedures were followed, unless otherwise noted.

Analytical results are reported on an "as received" basis unless otherwise noted. Where possible, the samples will be retained by the laboratory for 14 days following issuance of the initial final report. The samples will be disposed of or returned at that time. Arrangements can be made for extended storage by contacting me at this time.

We appreciate your decision to use Braun Intertec Corporation for this project. We are committed to being your vendor of choice to meet your analytical chemistry needs.

If you have any questions please contact me at the above phone number.

Sincerely,



Thomas P. Wagner  
Project Manager

Braun Intertec-Bloomington  
11001 Hampshire Ave. South  
Bloomington, MN 55438

Client Ref: Holasek Property, Medina MN  
Client Contact: Mr. Jeremy Hansen  
PO Number: BL-10-06413

Report #: 1002579  
Project Mgr: Thomas P. Wagner  
Account ID: BL2004

### Qualifiers and Abbreviations

vfa	The method reporting limit (MRL) was raised for one or more analytes; a dilution of the sample was necessary due to high analyte levels and/or matrix interferences.
qn	The spike recovery is outside of laboratory control limits for the matrix spike (MS) and/or the matrix spike duplicate (MSD).
ho	The sample chromatogram indicates the presence of higher boiling hydrocarbons than expected in the diesel range chromatogram.
hn	The sample chromatogram indicates the presence of lower boiling hydrocarbons than expected in the diesel range chromatogram.
hj	The sample chromatogram indicates the presence of higher boiling hydrocarbons than expected in the gasoline range chromatogram.
COC	Chain of Custody
dry	Sample results reported on a dry weight basis
MRL	Method Reporting Limit
NA	Not Applicable
ND	Analyte NOT DETECTED
NR	Not Reported
%Rec	Percent Recovery
RPD	Relative Percent Difference
VOC	Volatile Organic Compound

Braun Intertec-Bloomington  
11001 Hampshire Ave. South  
Bloomington, MN 55438

Client Ref: Holasek Property, Medina MN  
Client Contact: Mr. Jeremy Hansen  
PO Number: BL-10-06413

Report #: 1002579  
Project Mgr: Thomas P. Wagner  
Account ID: BL2004

### Sample Summary

Sample ID	Laboratory ID	Matrix	Date Sampled	Date Received
MeOH Trip Blank	1002579-01	Soil	05/20/10 00:00	05/20/10 16:30
ST-13 (2-4)	1002579-02	Soil	05/20/10 10:00	05/20/10 16:30
ST-2 (4-6)	1002579-03	Soil	05/20/10 12:12	05/20/10 16:30
ST-2 (12.5)	1002579-04	Soil	05/20/10 12:29	05/20/10 16:30
ST-11 (2-4)	1002579-05	Soil	05/20/10 13:57	05/20/10 16:30
ST-7 (2-4)	1002579-06	Soil	05/20/10 15:09	05/20/10 16:30

Braun Intertec-Bloomington  
11001 Hampshire Ave. South  
Bloomington, MN 55438

Client Ref: Holasek Property, Medina MN  
Client Contact: Mr. Jeremy Hansen  
PO Number: BL-10-06413

Report #: 1002579  
Project Mgr: Thomas P. Wagner  
Account ID: BL2004

**Conditions Upon Receipt**

**Cooler:** Cooler 1

**Temperature:** 1.6 °C  
**Temperature Blank:** Yes  
**Received on Ice:** Yes  
**Preservation Confirmed:** No

**COC Included:** Yes  
**COC Complete:** Yes  
**COC & Labels Agree:** Yes  
**Sufficient Sample Provided:** Yes

**Custody Seals Used:** No  
**Custody Seals Intact:** NA  
**Hand Delivered by Client:** Yes  
**Headspace Present (VOC):** No

Braun Intertec-Bloomington  
11001 Hampshire Ave. South  
Bloomington, MN 55438

Client Ref: Holasek Property, Medina MN  
Client Contact: Mr. Jeremy Hansen  
PO Number: BL-10-06413

Report #: 1002579  
Project Mgr: Thomas P. Wagner  
Account ID: BL2004

## MeOH Trip Blank

1002579-01 (Soil)

5/20/10 0:00

### Volatile Organic Compounds

Analyte	Result	MRL	Units	Dilution	Batch	Prepared	Analyzed	Method	Notes
1,1,1,2-Tetrachloroethane	< 0.050	0.050	mg/kg	1	B0E0371	5/21/10	5/21/10	EPA 8260B	
1,1,1-Trichloroethane	< 0.050	0.050	mg/kg	1	B0E0371	5/21/10	5/21/10	EPA 8260B	
1,1,2,2-Tetrachloroethane	< 0.050	0.050	mg/kg	1	B0E0371	5/21/10	5/21/10	EPA 8260B	
1,1,2-Trichloroethane	< 0.050	0.050	mg/kg	1	B0E0371	5/21/10	5/21/10	EPA 8260B	
1,1,2-Trichlorotrifluoroethane	< 0.050	0.050	mg/kg	1	B0E0371	5/21/10	5/21/10	EPA 8260B	
1,1-Dichloroethane	< 0.050	0.050	mg/kg	1	B0E0371	5/21/10	5/21/10	EPA 8260B	
1,1-Dichloroethene	< 0.050	0.050	mg/kg	1	B0E0371	5/21/10	5/21/10	EPA 8260B	
1,1-Dichloropropene	< 0.050	0.050	mg/kg	1	B0E0371	5/21/10	5/21/10	EPA 8260B	
1,2,3-Trichlorobenzene	< 0.10	0.10	mg/kg	1	B0E0371	5/21/10	5/21/10	EPA 8260B	
1,2,3-Trichloropropane	< 0.050	0.050	mg/kg	1	B0E0371	5/21/10	5/21/10	EPA 8260B	
1,2,4-Trichlorobenzene	< 0.050	0.050	mg/kg	1	B0E0371	5/21/10	5/21/10	EPA 8260B	
1,2,4-Trimethylbenzene	< 0.12	0.12	mg/kg	1	B0E0371	5/21/10	5/21/10	EPA 8260B	
1,2-Dibromo-3-chloropropane	< 0.50	0.50	mg/kg	1	B0E0371	5/21/10	5/21/10	EPA 8260B	
1,2-Dibromoethane	< 0.050	0.050	mg/kg	1	B0E0371	5/21/10	5/21/10	EPA 8260B	
1,2-Dichlorobenzene	< 0.050	0.050	mg/kg	1	B0E0371	5/21/10	5/21/10	EPA 8260B	
1,2-Dichloroethane	< 0.050	0.050	mg/kg	1	B0E0371	5/21/10	5/21/10	EPA 8260B	
1,2-Dichloropropane	< 0.050	0.050	mg/kg	1	B0E0371	5/21/10	5/21/10	EPA 8260B	
1,3,5-Trimethylbenzene	< 0.12	0.12	mg/kg	1	B0E0371	5/21/10	5/21/10	EPA 8260B	
1,3-Dichlorobenzene	< 0.050	0.050	mg/kg	1	B0E0371	5/21/10	5/21/10	EPA 8260B	
1,3-Dichloropropane	< 0.050	0.050	mg/kg	1	B0E0371	5/21/10	5/21/10	EPA 8260B	
1,4-Dichlorobenzene	< 0.050	0.050	mg/kg	1	B0E0371	5/21/10	5/21/10	EPA 8260B	
2,2-Dichloropropane	< 0.050	0.050	mg/kg	1	B0E0371	5/21/10	5/21/10	EPA 8260B	
2-Butanone (MEK)	< 0.50	0.50	mg/kg	1	B0E0371	5/21/10	5/21/10	EPA 8260B	
2-Chlorotoluene	< 0.12	0.12	mg/kg	1	B0E0371	5/21/10	5/21/10	EPA 8260B	
4-Chlorotoluene	< 0.12	0.12	mg/kg	1	B0E0371	5/21/10	5/21/10	EPA 8260B	
4-Isopropyltoluene	< 0.050	0.050	mg/kg	1	B0E0371	5/21/10	5/21/10	EPA 8260B	
Acetone	< 0.75	0.75	mg/kg	1	B0E0371	5/21/10	5/21/10	EPA 8260B	
Allyl Chloride	< 0.050	0.050	mg/kg	1	B0E0371	5/21/10	5/21/10	EPA 8260B	
Benzene	< 0.050	0.050	mg/kg	1	B0E0371	5/21/10	5/21/10	EPA 8260B	
Bromobenzene	< 0.050	0.050	mg/kg	1	B0E0371	5/21/10	5/21/10	EPA 8260B	
Bromochloromethane	< 0.050	0.050	mg/kg	1	B0E0371	5/21/10	5/21/10	EPA 8260B	
Bromodichloromethane	< 0.050	0.050	mg/kg	1	B0E0371	5/21/10	5/21/10	EPA 8260B	
Bromoform	< 0.25	0.25	mg/kg	1	B0E0371	5/21/10	5/21/10	EPA 8260B	
Bromomethane	< 0.050	0.050	mg/kg	1	B0E0371	5/21/10	5/21/10	EPA 8260B	
Carbon Tetrachloride	< 0.050	0.050	mg/kg	1	B0E0371	5/21/10	5/21/10	EPA 8260B	
Chlorobenzene	< 0.050	0.050	mg/kg	1	B0E0371	5/21/10	5/21/10	EPA 8260B	

Braun Intertec-Bloomington  
11001 Hampshire Ave. South  
Bloomington, MN 55438

Client Ref: Holasek Property, Medina MN  
Client Contact: Mr. Jeremy Hansen  
PO Number: BL-10-06413

Report #: 1002579  
Project Mgr: Thomas P. Wagner  
Account ID: BL2004

## MeOH Trip Blank

1002579-01 (Soil)

5/20/10 0:00

### Volatile Organic Compounds

Analyte	Result	MRL	Units	Dilution	Batch	Prepared	Analyzed	Method	Notes
Chlorodibromomethane	< 0.050	0.050	mg/kg	1	B0E0371	5/21/10	5/21/10	EPA 8260B	
Chloroethane	< 0.050	0.050	mg/kg	1	B0E0371	5/21/10	5/21/10	EPA 8260B	
Chloroform	< 0.050	0.050	mg/kg	1	B0E0371	5/21/10	5/21/10	EPA 8260B	
Chloromethane	< 0.050	0.050	mg/kg	1	B0E0371	5/21/10	5/21/10	EPA 8260B	
cis-1,2-Dichloroethene	< 0.050	0.050	mg/kg	1	B0E0371	5/21/10	5/21/10	EPA 8260B	
cis-1,3-Dichloropropene	< 0.050	0.050	mg/kg	1	B0E0371	5/21/10	5/21/10	EPA 8260B	
Dibromomethane	< 0.050	0.050	mg/kg	1	B0E0371	5/21/10	5/21/10	EPA 8260B	
Dichlorodifluoromethane	< 0.050	0.050	mg/kg	1	B0E0371	5/21/10	5/21/10	EPA 8260B	
Dichlorofluoromethane	< 0.050	0.050	mg/kg	1	B0E0371	5/21/10	5/21/10	EPA 8260B	
Ethyl Ether	< 0.050	0.050	mg/kg	1	B0E0371	5/21/10	5/21/10	EPA 8260B	
Ethylbenzene	< 0.050	0.050	mg/kg	1	B0E0371	5/21/10	5/21/10	EPA 8260B	
Hexachlorobutadiene	< 0.10	0.10	mg/kg	1	B0E0371	5/21/10	5/21/10	EPA 8260B	
Isopropylbenzene	< 0.12	0.12	mg/kg	1	B0E0371	5/21/10	5/21/10	EPA 8260B	
m,p-Xylenes	< 0.050	0.050	mg/kg	1	B0E0371	5/21/10	5/21/10	EPA 8260B	
Methyl Isobutyl Ketone	< 0.25	0.25	mg/kg	1	B0E0371	5/21/10	5/21/10	EPA 8260B	
Methylene chloride	< 0.25	0.25	mg/kg	1	B0E0371	5/21/10	5/21/10	EPA 8260B	
Methyl-t-butyl ether	< 0.050	0.050	mg/kg	1	B0E0371	5/21/10	5/21/10	EPA 8260B	
Naphthalene	< 0.12	0.12	mg/kg	1	B0E0371	5/21/10	5/21/10	EPA 8260B	
n-Butylbenzene	< 0.12	0.12	mg/kg	1	B0E0371	5/21/10	5/21/10	EPA 8260B	
n-Propylbenzene	< 0.12	0.12	mg/kg	1	B0E0371	5/21/10	5/21/10	EPA 8260B	
o-Xylene	< 0.050	0.050	mg/kg	1	B0E0371	5/21/10	5/21/10	EPA 8260B	
sec-Butylbenzene	< 0.12	0.12	mg/kg	1	B0E0371	5/21/10	5/21/10	EPA 8260B	
Styrene	< 0.12	0.12	mg/kg	1	B0E0371	5/21/10	5/21/10	EPA 8260B	
tert-Butylbenzene	< 0.12	0.12	mg/kg	1	B0E0371	5/21/10	5/21/10	EPA 8260B	
Tetrachloroethene	< 0.10	0.10	mg/kg	1	B0E0371	5/21/10	5/21/10	EPA 8260B	
Tetrahydrofuran	< 0.25	0.25	mg/kg	1	B0E0371	5/21/10	5/21/10	EPA 8260B	
Toluene	< 0.050	0.050	mg/kg	1	B0E0371	5/21/10	5/21/10	EPA 8260B	
trans-1,2-Dichloroethene	< 0.050	0.050	mg/kg	1	B0E0371	5/21/10	5/21/10	EPA 8260B	
trans-1,3-Dichloropropene	< 0.050	0.050	mg/kg	1	B0E0371	5/21/10	5/21/10	EPA 8260B	
Trichloroethene	< 0.050	0.050	mg/kg	1	B0E0371	5/21/10	5/21/10	EPA 8260B	
Trichlorofluoromethane	< 0.050	0.050	mg/kg	1	B0E0371	5/21/10	5/21/10	EPA 8260B	
Vinyl chloride	< 0.12	0.12	mg/kg	1	B0E0371	5/21/10	5/21/10	EPA 8260B	
<i>Surrogate: 1,2-Dichloroethane-d4</i>	111 %	<i>Limits: 80-120%</i>			B0E0371	5/21/10	5/21/10	EPA 8260B	
<i>Surrogate: 4-Bromofluorobenzene</i>	88.7 %	<i>Limits: 80-120%</i>			B0E0371	5/21/10	5/21/10	EPA 8260B	
<i>Surrogate: Dibromofluoromethane</i>	102 %	<i>Limits: 80-120%</i>			B0E0371	5/21/10	5/21/10	EPA 8260B	
<i>Surrogate: Toluene-d8</i>	102 %	<i>Limits: 80-120%</i>			B0E0371	5/21/10	5/21/10	EPA 8260B	

Braun Intertec-Bloomington  
11001 Hampshire Ave. South  
Bloomington, MN 55438

Client Ref: Holasek Property, Medina MN  
Client Contact: Mr. Jeremy Hansen  
PO Number: BL-10-06413

Report #: 1002579  
Project Mgr: Thomas P. Wagner  
Account ID: BL2004

## ST-13 (2-4)

1002579-02 (Soil)

5/20/10 10:00

### Classical Chemistry Parameters

Analyte	Result	MRL	Units	Dilution	Batch	Prepared	Analyzed	Method	Notes
% Solids	81	0.050	% Wt	1	B0E0370	5/21/10	5/24/10	EPA 3545A 11.4	

### Total Petroleum Hydrocarbons

Analyte	Result	MRL	Units	Dilution	Batch	Prepared	Analyzed	Method	Notes
Diesel Range Organics (DRO)	< 10	10	mg/kg dry	1	B0E0366	5/21/10	5/27/10	WI DRO (95)	ho
Gasoline Range Organics (GRO)	< 12	12	mg/kg dry	1	B0E0364	5/21/10	5/21/10	WI GRO (95)	

### Volatile Organic Compounds

Analyte	Result	MRL	Units	Dilution	Batch	Prepared	Analyzed	Method	Notes
1,1,1,2-Tetrachloroethane	< 0.062	0.062	mg/kg dry	1	B0E0371	5/21/10	5/21/10	EPA 8260B	
1,1,1-Trichloroethane	< 0.062	0.062	mg/kg dry	1	B0E0371	5/21/10	5/21/10	EPA 8260B	
1,1,2,2-Tetrachloroethane	< 0.062	0.062	mg/kg dry	1	B0E0371	5/21/10	5/21/10	EPA 8260B	
1,1,2-Trichloroethane	< 0.062	0.062	mg/kg dry	1	B0E0371	5/21/10	5/21/10	EPA 8260B	
1,1,2-Trichlorotrifluoroethane	< 0.062	0.062	mg/kg dry	1	B0E0371	5/21/10	5/21/10	EPA 8260B	
1,1-Dichloroethane	< 0.062	0.062	mg/kg dry	1	B0E0371	5/21/10	5/21/10	EPA 8260B	
1,1-Dichloroethene	< 0.062	0.062	mg/kg dry	1	B0E0371	5/21/10	5/21/10	EPA 8260B	
1,1-Dichloropropene	< 0.062	0.062	mg/kg dry	1	B0E0371	5/21/10	5/21/10	EPA 8260B	
1,2,3-Trichlorobenzene	< 0.12	0.12	mg/kg dry	1	B0E0371	5/21/10	5/21/10	EPA 8260B	
1,2,3-Trichloropropane	< 0.062	0.062	mg/kg dry	1	B0E0371	5/21/10	5/21/10	EPA 8260B	
1,2,4-Trichlorobenzene	< 0.062	0.062	mg/kg dry	1	B0E0371	5/21/10	5/21/10	EPA 8260B	
1,2,4-Trimethylbenzene	< 0.16	0.16	mg/kg dry	1	B0E0371	5/21/10	5/21/10	EPA 8260B	
1,2-Dibromo-3-chloropropane	< 0.62	0.62	mg/kg dry	1	B0E0371	5/21/10	5/21/10	EPA 8260B	
1,2-Dibromoethane	< 0.062	0.062	mg/kg dry	1	B0E0371	5/21/10	5/21/10	EPA 8260B	
1,2-Dichlorobenzene	< 0.062	0.062	mg/kg dry	1	B0E0371	5/21/10	5/21/10	EPA 8260B	
1,2-Dichloroethane	< 0.062	0.062	mg/kg dry	1	B0E0371	5/21/10	5/21/10	EPA 8260B	
1,2-Dichloropropane	< 0.062	0.062	mg/kg dry	1	B0E0371	5/21/10	5/21/10	EPA 8260B	
1,3,5-Trimethylbenzene	< 0.16	0.16	mg/kg dry	1	B0E0371	5/21/10	5/21/10	EPA 8260B	
1,3-Dichlorobenzene	< 0.062	0.062	mg/kg dry	1	B0E0371	5/21/10	5/21/10	EPA 8260B	
1,3-Dichloropropane	< 0.062	0.062	mg/kg dry	1	B0E0371	5/21/10	5/21/10	EPA 8260B	
1,4-Dichlorobenzene	< 0.062	0.062	mg/kg dry	1	B0E0371	5/21/10	5/21/10	EPA 8260B	
2,2-Dichloropropane	< 0.062	0.062	mg/kg dry	1	B0E0371	5/21/10	5/21/10	EPA 8260B	
2-Butanone (MEK)	< 0.62	0.62	mg/kg dry	1	B0E0371	5/21/10	5/21/10	EPA 8260B	
2-Chlorotoluene	< 0.16	0.16	mg/kg dry	1	B0E0371	5/21/10	5/21/10	EPA 8260B	
4-Chlorotoluene	< 0.16	0.16	mg/kg dry	1	B0E0371	5/21/10	5/21/10	EPA 8260B	
4-Isopropyltoluene	< 0.062	0.062	mg/kg dry	1	B0E0371	5/21/10	5/21/10	EPA 8260B	

Braun Intertec-Bloomington  
11001 Hampshire Ave. South  
Bloomington, MN 55438

Client Ref: Holasek Property, Medina MN  
Client Contact: Mr. Jeremy Hansen  
PO Number: BL-10-06413

Report #: 1002579  
Project Mgr: Thomas P. Wagner  
Account ID: BL2004

## ST-13 (2-4)

1002579-02 (Soil)

5/20/10 10:00

### Volatile Organic Compounds

Analyte	Result	MRL	Units	Dilution	Batch	Prepared	Analyzed	Method	Notes
Acetone	< 0.93	0.93	mg/kg dry	1	B0E0371	5/21/10	5/21/10	EPA 8260B	
Allyl Chloride	< 0.062	0.062	mg/kg dry	1	B0E0371	5/21/10	5/21/10	EPA 8260B	
Benzene	< 0.062	0.062	mg/kg dry	1	B0E0371	5/21/10	5/21/10	EPA 8260B	
Bromobenzene	< 0.062	0.062	mg/kg dry	1	B0E0371	5/21/10	5/21/10	EPA 8260B	
Bromochloromethane	< 0.062	0.062	mg/kg dry	1	B0E0371	5/21/10	5/21/10	EPA 8260B	
Bromodichloromethane	< 0.062	0.062	mg/kg dry	1	B0E0371	5/21/10	5/21/10	EPA 8260B	
Bromoform	< 0.31	0.31	mg/kg dry	1	B0E0371	5/21/10	5/21/10	EPA 8260B	
Bromomethane	< 0.062	0.062	mg/kg dry	1	B0E0371	5/21/10	5/21/10	EPA 8260B	
Carbon Tetrachloride	< 0.062	0.062	mg/kg dry	1	B0E0371	5/21/10	5/21/10	EPA 8260B	
Chlorobenzene	< 0.062	0.062	mg/kg dry	1	B0E0371	5/21/10	5/21/10	EPA 8260B	
Chlorodibromomethane	< 0.062	0.062	mg/kg dry	1	B0E0371	5/21/10	5/21/10	EPA 8260B	
Chloroethane	< 0.062	0.062	mg/kg dry	1	B0E0371	5/21/10	5/21/10	EPA 8260B	
Chloroform	< 0.062	0.062	mg/kg dry	1	B0E0371	5/21/10	5/21/10	EPA 8260B	
Chloromethane	< 0.062	0.062	mg/kg dry	1	B0E0371	5/21/10	5/21/10	EPA 8260B	
cis-1,2-Dichloroethene	< 0.062	0.062	mg/kg dry	1	B0E0371	5/21/10	5/21/10	EPA 8260B	
cis-1,3-Dichloropropene	< 0.062	0.062	mg/kg dry	1	B0E0371	5/21/10	5/21/10	EPA 8260B	
Dibromomethane	< 0.062	0.062	mg/kg dry	1	B0E0371	5/21/10	5/21/10	EPA 8260B	
Dichlorodifluoromethane	< 0.062	0.062	mg/kg dry	1	B0E0371	5/21/10	5/21/10	EPA 8260B	
Dichlorofluoromethane	< 0.062	0.062	mg/kg dry	1	B0E0371	5/21/10	5/21/10	EPA 8260B	
Ethyl Ether	< 0.062	0.062	mg/kg dry	1	B0E0371	5/21/10	5/21/10	EPA 8260B	
Ethylbenzene	< 0.062	0.062	mg/kg dry	1	B0E0371	5/21/10	5/21/10	EPA 8260B	
Hexachlorobutadiene	< 0.12	0.12	mg/kg dry	1	B0E0371	5/21/10	5/21/10	EPA 8260B	
Isopropylbenzene	< 0.16	0.16	mg/kg dry	1	B0E0371	5/21/10	5/21/10	EPA 8260B	
m,p-Xylenes	< 0.062	0.062	mg/kg dry	1	B0E0371	5/21/10	5/21/10	EPA 8260B	
Methyl Isobutyl Ketone	< 0.31	0.31	mg/kg dry	1	B0E0371	5/21/10	5/21/10	EPA 8260B	
Methylene chloride	< 0.31	0.31	mg/kg dry	1	B0E0371	5/21/10	5/21/10	EPA 8260B	
Methyl-t-butyl ether	< 0.062	0.062	mg/kg dry	1	B0E0371	5/21/10	5/21/10	EPA 8260B	
Naphthalene	< 0.16	0.16	mg/kg dry	1	B0E0371	5/21/10	5/21/10	EPA 8260B	
n-Butylbenzene	< 0.16	0.16	mg/kg dry	1	B0E0371	5/21/10	5/21/10	EPA 8260B	
n-Propylbenzene	< 0.16	0.16	mg/kg dry	1	B0E0371	5/21/10	5/21/10	EPA 8260B	
o-Xylene	< 0.062	0.062	mg/kg dry	1	B0E0371	5/21/10	5/21/10	EPA 8260B	
sec-Butylbenzene	< 0.16	0.16	mg/kg dry	1	B0E0371	5/21/10	5/21/10	EPA 8260B	
Styrene	< 0.16	0.16	mg/kg dry	1	B0E0371	5/21/10	5/21/10	EPA 8260B	
tert-Butylbenzene	< 0.16	0.16	mg/kg dry	1	B0E0371	5/21/10	5/21/10	EPA 8260B	
Tetrachloroethene	< 0.12	0.12	mg/kg dry	1	B0E0371	5/21/10	5/21/10	EPA 8260B	
Tetrahydrofuran	< 0.31	0.31	mg/kg dry	1	B0E0371	5/21/10	5/21/10	EPA 8260B	

Braun Intertec-Bloomington  
11001 Hampshire Ave. South  
Bloomington, MN 55438

Client Ref: Holasek Property, Medina MN  
Client Contact: Mr. Jeremy Hansen  
PO Number: BL-10-06413

Report #: 1002579  
Project Mgr: Thomas P. Wagner  
Account ID: BL2004

## ST-13 (2-4)

1002579-02 (Soil)

5/20/10 10:00

### Volatile Organic Compounds

Analyte	Result	MRL	Units	Dilution	Batch	Prepared	Analyzed	Method	Notes
Toluene	< 0.062	0.062	mg/kg dry	1	B0E0371	5/21/10	5/21/10	EPA 8260B	
trans-1,2-Dichloroethene	< 0.062	0.062	mg/kg dry	1	B0E0371	5/21/10	5/21/10	EPA 8260B	
trans-1,3-Dichloropropene	< 0.062	0.062	mg/kg dry	1	B0E0371	5/21/10	5/21/10	EPA 8260B	
Trichloroethene	< 0.062	0.062	mg/kg dry	1	B0E0371	5/21/10	5/21/10	EPA 8260B	
Trichlorofluoromethane	< 0.062	0.062	mg/kg dry	1	B0E0371	5/21/10	5/21/10	EPA 8260B	
Vinyl chloride	< 0.16	0.16	mg/kg dry	1	B0E0371	5/21/10	5/21/10	EPA 8260B	
<i>Surrogate: 1,2-Dichloroethane-d4</i>	<i>113 %</i>	<i>Limits: 80-120%</i>			<i>B0E0371</i>	<i>5/21/10</i>	<i>5/21/10</i>	<i>EPA 8260B</i>	
<i>Surrogate: 4-Bromofluorobenzene</i>	<i>87.8 %</i>	<i>Limits: 80-120%</i>			<i>B0E0371</i>	<i>5/21/10</i>	<i>5/21/10</i>	<i>EPA 8260B</i>	
<i>Surrogate: Dibromofluoromethane</i>	<i>102 %</i>	<i>Limits: 80-120%</i>			<i>B0E0371</i>	<i>5/21/10</i>	<i>5/21/10</i>	<i>EPA 8260B</i>	
<i>Surrogate: Toluene-d8</i>	<i>100 %</i>	<i>Limits: 80-120%</i>			<i>B0E0371</i>	<i>5/21/10</i>	<i>5/21/10</i>	<i>EPA 8260B</i>	

Braun Intertec-Bloomington  
11001 Hampshire Ave. South  
Bloomington, MN 55438

Client Ref: Holasek Property, Medina MN  
Client Contact: Mr. Jeremy Hansen  
PO Number: BL-10-06413

Report #: 1002579  
Project Mgr: Thomas P. Wagner  
Account ID: BL2004

**ST-2 (4-6)**  
**1002579-03 (Soil)**  
**5/20/10 12:12**

### Classical Chemistry Parameters

Analyte	Result	MRL	Units	Dilution	Batch	Prepared	Analyzed	Method	Notes
% Solids	79	0.050	% Wt	1	B0E0370	5/21/10	5/24/10	EPA 3545A 11.4	

### Total Petroleum Hydrocarbons

Analyte	Result	MRL	Units	Dilution	Batch	Prepared	Analyzed	Method	Notes
Diesel Range Organics (DRO)	< 10	10	mg/kg dry	1	B0E0366	5/21/10	5/27/10	WI DRO (95)	hn
Gasoline Range Organics (GRO)	520	130	mg/kg dry	10	B0E0364	5/21/10	5/21/10	WI GRO (95)	hj

### Volatile Organic Compounds

Analyte	Result	MRL	Units	Dilution	Batch	Prepared	Analyzed	Method	Notes
1,1,1,2-Tetrachloroethane	< 0.63	0.63	mg/kg dry	10	B0E0400	5/25/10	5/25/10	EPA 8260B	
1,1,1-Trichloroethane	< 0.63	0.63	mg/kg dry	10	B0E0400	5/25/10	5/25/10	EPA 8260B	
1,1,2,2-Tetrachloroethane	< 0.63	0.63	mg/kg dry	10	B0E0400	5/25/10	5/25/10	EPA 8260B	
1,1,2-Trichloroethane	< 0.63	0.63	mg/kg dry	10	B0E0400	5/25/10	5/25/10	EPA 8260B	
1,1,2-Trichlorotrifluoroethane	< 0.63	0.63	mg/kg dry	10	B0E0400	5/25/10	5/25/10	EPA 8260B	
1,1-Dichloroethane	< 0.63	0.63	mg/kg dry	10	B0E0400	5/25/10	5/25/10	EPA 8260B	
1,1-Dichloroethene	< 0.63	0.63	mg/kg dry	10	B0E0400	5/25/10	5/25/10	EPA 8260B	
1,1-Dichloropropene	< 0.63	0.63	mg/kg dry	10	B0E0400	5/25/10	5/25/10	EPA 8260B	
1,2,3-Trichlorobenzene	< 1.3	1.3	mg/kg dry	10	B0E0400	5/25/10	5/25/10	EPA 8260B	
1,2,3-Trichloropropane	< 0.63	0.63	mg/kg dry	10	B0E0400	5/25/10	5/25/10	EPA 8260B	
1,2,4-Trichlorobenzene	< 0.63	0.63	mg/kg dry	10	B0E0400	5/25/10	5/25/10	EPA 8260B	
<b>1,2,4-Trimethylbenzene</b>	<b>45</b>	1.6	mg/kg dry	10	B0E0400	5/25/10	5/25/10	EPA 8260B	
1,2-Dibromo-3-chloropropane	< 6.3	6.3	mg/kg dry	10	B0E0400	5/25/10	5/25/10	EPA 8260B	
1,2-Dibromoethane	< 0.63	0.63	mg/kg dry	10	B0E0400	5/25/10	5/25/10	EPA 8260B	
1,2-Dichlorobenzene	< 0.63	0.63	mg/kg dry	10	B0E0400	5/25/10	5/25/10	EPA 8260B	
1,2-Dichloroethane	< 0.63	0.63	mg/kg dry	10	B0E0400	5/25/10	5/25/10	EPA 8260B	
1,2-Dichloropropane	< 0.63	0.63	mg/kg dry	10	B0E0400	5/25/10	5/25/10	EPA 8260B	
<b>1,3,5-Trimethylbenzene</b>	<b>15</b>	1.6	mg/kg dry	10	B0E0400	5/25/10	5/25/10	EPA 8260B	
1,3-Dichlorobenzene	< 0.63	0.63	mg/kg dry	10	B0E0400	5/25/10	5/25/10	EPA 8260B	
1,3-Dichloropropane	< 0.63	0.63	mg/kg dry	10	B0E0400	5/25/10	5/25/10	EPA 8260B	
1,4-Dichlorobenzene	< 0.63	0.63	mg/kg dry	10	B0E0400	5/25/10	5/25/10	EPA 8260B	
2,2-Dichloropropane	< 0.63	0.63	mg/kg dry	10	B0E0400	5/25/10	5/25/10	EPA 8260B	
2-Butanone (MEK)	< 6.3	6.3	mg/kg dry	10	B0E0400	5/25/10	5/25/10	EPA 8260B	
2-Chlorotoluene	< 1.6	1.6	mg/kg dry	10	B0E0400	5/25/10	5/25/10	EPA 8260B	
4-Chlorotoluene	< 1.6	1.6	mg/kg dry	10	B0E0400	5/25/10	5/25/10	EPA 8260B	
4-Isopropyltoluene	< 0.63	0.63	mg/kg dry	10	B0E0400	5/25/10	5/25/10	EPA 8260B	

Braun Intertec-Bloomington  
11001 Hampshire Ave. South  
Bloomington, MN 55438

Client Ref: Holasek Property, Medina MN  
Client Contact: Mr. Jeremy Hansen  
PO Number: BL-10-06413

Report #: 1002579  
Project Mgr: Thomas P. Wagner  
Account ID: BL2004

**ST-2 (4-6)**  
**1002579-03 (Soil)**  
**5/20/10 12:12**

## Volatile Organic Compounds

vfa

Analyte	Result	MRL	Units	Dilution	Batch	Prepared	Analyzed	Method	Notes
Acetone	< 9.5	9.5	mg/kg dry	10	B0E0400	5/25/10	5/25/10	EPA 8260B	qn
Allyl Chloride	< 0.63	0.63	mg/kg dry	10	B0E0400	5/25/10	5/25/10	EPA 8260B	
Benzene	< 0.63	0.63	mg/kg dry	10	B0E0400	5/25/10	5/25/10	EPA 8260B	
Bromobenzene	< 0.63	0.63	mg/kg dry	10	B0E0400	5/25/10	5/25/10	EPA 8260B	
Bromochloromethane	< 0.63	0.63	mg/kg dry	10	B0E0400	5/25/10	5/25/10	EPA 8260B	
Bromodichloromethane	< 0.63	0.63	mg/kg dry	10	B0E0400	5/25/10	5/25/10	EPA 8260B	
Bromoform	< 3.2	3.2	mg/kg dry	10	B0E0400	5/25/10	5/25/10	EPA 8260B	
Bromomethane	< 0.63	0.63	mg/kg dry	10	B0E0400	5/25/10	5/25/10	EPA 8260B	
Carbon Tetrachloride	< 0.63	0.63	mg/kg dry	10	B0E0400	5/25/10	5/25/10	EPA 8260B	
Chlorobenzene	< 0.63	0.63	mg/kg dry	10	B0E0400	5/25/10	5/25/10	EPA 8260B	
Chlorodibromomethane	< 0.63	0.63	mg/kg dry	10	B0E0400	5/25/10	5/25/10	EPA 8260B	
Chloroethane	< 0.63	0.63	mg/kg dry	10	B0E0400	5/25/10	5/25/10	EPA 8260B	
Chloroform	< 0.63	0.63	mg/kg dry	10	B0E0400	5/25/10	5/25/10	EPA 8260B	
Chloromethane	< 0.63	0.63	mg/kg dry	10	B0E0400	5/25/10	5/25/10	EPA 8260B	
cis-1,2-Dichloroethene	< 0.63	0.63	mg/kg dry	10	B0E0400	5/25/10	5/25/10	EPA 8260B	
cis-1,3-Dichloropropene	< 0.63	0.63	mg/kg dry	10	B0E0400	5/25/10	5/25/10	EPA 8260B	
Dibromomethane	< 0.63	0.63	mg/kg dry	10	B0E0400	5/25/10	5/25/10	EPA 8260B	
Dichlorodifluoromethane	< 0.63	0.63	mg/kg dry	10	B0E0400	5/25/10	5/25/10	EPA 8260B	
Dichlorofluoromethane	< 0.63	0.63	mg/kg dry	10	B0E0400	5/25/10	5/25/10	EPA 8260B	
Ethyl Ether	< 0.63	0.63	mg/kg dry	10	B0E0400	5/25/10	5/25/10	EPA 8260B	
<b>Ethylbenzene</b>	<b>15</b>	0.63	mg/kg dry	10	B0E0400	5/25/10	5/25/10	EPA 8260B	
Hexachlorobutadiene	< 1.3	1.3	mg/kg dry	10	B0E0400	5/25/10	5/25/10	EPA 8260B	
<b>Isopropylbenzene</b>	<b>1.8</b>	1.6	mg/kg dry	10	B0E0400	5/25/10	5/25/10	EPA 8260B	
<b>m,p-Xylenes</b>	<b>39</b>	0.63	mg/kg dry	10	B0E0400	5/25/10	5/25/10	EPA 8260B	
Methyl Isobutyl Ketone	< 3.2	3.2	mg/kg dry	10	B0E0400	5/25/10	5/25/10	EPA 8260B	
Methylene chloride	< 3.2	3.2	mg/kg dry	10	B0E0400	5/25/10	5/25/10	EPA 8260B	
Methyl-t-butyl ether	< 0.63	0.63	mg/kg dry	10	B0E0400	5/25/10	5/25/10	EPA 8260B	
<b>Naphthalene</b>	<b>7.6</b>	1.6	mg/kg dry	10	B0E0400	5/25/10	5/25/10	EPA 8260B	
<b>n-Butylbenzene</b>	<b>4.0</b>	1.6	mg/kg dry	10	B0E0400	5/25/10	5/25/10	EPA 8260B	
<b>n-Propylbenzene</b>	<b>7.6</b>	1.6	mg/kg dry	10	B0E0400	5/25/10	5/25/10	EPA 8260B	
<b>o-Xylene</b>	<b>20</b>	0.63	mg/kg dry	10	B0E0400	5/25/10	5/25/10	EPA 8260B	
sec-Butylbenzene	< 1.6	1.6	mg/kg dry	10	B0E0400	5/25/10	5/25/10	EPA 8260B	
Styrene	< 1.6	1.6	mg/kg dry	10	B0E0400	5/25/10	5/25/10	EPA 8260B	
tert-Butylbenzene	< 1.6	1.6	mg/kg dry	10	B0E0400	5/25/10	5/25/10	EPA 8260B	
Tetrachloroethene	< 1.3	1.3	mg/kg dry	10	B0E0400	5/25/10	5/25/10	EPA 8260B	
Tetrahydrofuran	< 3.2	3.2	mg/kg dry	10	B0E0400	5/25/10	5/25/10	EPA 8260B	qn

Braun Intertec-Bloomington  
11001 Hampshire Ave. South  
Bloomington, MN 55438

Client Ref: Holasek Property, Medina MN  
Client Contact: Mr. Jeremy Hansen  
PO Number: BL-10-06413

Report #: 1002579  
Project Mgr: Thomas P. Wagner  
Account ID: BL2004

**ST-2 (4-6)**  
**1002579-03 (Soil)**  
**5/20/10 12:12**

## Volatile Organic Compounds

vfa

Analyte	Result	MRL	Units	Dilution	Batch	Prepared	Analyzed	Method	Notes
<b>Toluene</b>	<b>9.8</b>	0.63	mg/kg dry	10	B0E0400	5/25/10	5/25/10	EPA 8260B	
trans-1,2-Dichloroethene	< 0.63	0.63	mg/kg dry	10	B0E0400	5/25/10	5/25/10	EPA 8260B	
trans-1,3-Dichloropropene	< 0.63	0.63	mg/kg dry	10	B0E0400	5/25/10	5/25/10	EPA 8260B	
Trichloroethene	< 0.63	0.63	mg/kg dry	10	B0E0400	5/25/10	5/25/10	EPA 8260B	
Trichlorofluoromethane	< 0.63	0.63	mg/kg dry	10	B0E0400	5/25/10	5/25/10	EPA 8260B	
Vinyl chloride	< 1.6	1.6	mg/kg dry	10	B0E0400	5/25/10	5/25/10	EPA 8260B	
<i>Surrogate: 1,2-Dichloroethane-d4</i>	<i>107 %</i>	<i>Limits: 80-120%</i>			<i>B0E0400</i>	<i>5/25/10</i>	<i>5/25/10</i>	<i>EPA 8260B</i>	
<i>Surrogate: 4-Bromofluorobenzene</i>	<i>97.0 %</i>	<i>Limits: 80-120%</i>			<i>B0E0400</i>	<i>5/25/10</i>	<i>5/25/10</i>	<i>EPA 8260B</i>	
<i>Surrogate: Dibromofluoromethane</i>	<i>101 %</i>	<i>Limits: 80-120%</i>			<i>B0E0400</i>	<i>5/25/10</i>	<i>5/25/10</i>	<i>EPA 8260B</i>	
<i>Surrogate: Toluene-d8</i>	<i>93.4 %</i>	<i>Limits: 80-120%</i>			<i>B0E0400</i>	<i>5/25/10</i>	<i>5/25/10</i>	<i>EPA 8260B</i>	

Braun Intertec-Bloomington  
11001 Hampshire Ave. South  
Bloomington, MN 55438

Client Ref: Holasek Property, Medina MN  
Client Contact: Mr. Jeremy Hansen  
PO Number: BL-10-06413

Report #: 1002579  
Project Mgr: Thomas P. Wagner  
Account ID: BL2004

## ST-2 (12.5)

1002579-04 (Soil)

5/20/10 12:29

### Classical Chemistry Parameters

Analyte	Result	MRL	Units	Dilution	Batch	Prepared	Analyzed	Method	Notes
% Solids	81	0.050	% Wt	1	B0E0370	5/21/10	5/24/10	EPA 3545A 11.4	

### Total Petroleum Hydrocarbons

Analyte	Result	MRL	Units	Dilution	Batch	Prepared	Analyzed	Method	Notes
Diesel Range Organics (DRO)	< 9.7	9.7	mg/kg dry	1	B0E0366	5/21/10	5/27/10	WI DRO (95)	
Gasoline Range Organics (GRO)	< 12	12	mg/kg dry	1	B0E0364	5/21/10	5/21/10	WI GRO (95)	

### Volatile Organic Compounds

Analyte	Result	MRL	Units	Dilution	Batch	Prepared	Analyzed	Method	Notes
1,1,1,2-Tetrachloroethane	< 0.062	0.062	mg/kg dry	1	B0E0371	5/21/10	5/21/10	EPA 8260B	
1,1,1-Trichloroethane	< 0.062	0.062	mg/kg dry	1	B0E0371	5/21/10	5/21/10	EPA 8260B	
1,1,2,2-Tetrachloroethane	< 0.062	0.062	mg/kg dry	1	B0E0371	5/21/10	5/21/10	EPA 8260B	
1,1,2-Trichloroethane	< 0.062	0.062	mg/kg dry	1	B0E0371	5/21/10	5/21/10	EPA 8260B	
1,1,2-Trichlorotrifluoroethane	< 0.062	0.062	mg/kg dry	1	B0E0371	5/21/10	5/21/10	EPA 8260B	
1,1-Dichloroethane	< 0.062	0.062	mg/kg dry	1	B0E0371	5/21/10	5/21/10	EPA 8260B	
1,1-Dichloroethene	< 0.062	0.062	mg/kg dry	1	B0E0371	5/21/10	5/21/10	EPA 8260B	
1,1-Dichloropropene	< 0.062	0.062	mg/kg dry	1	B0E0371	5/21/10	5/21/10	EPA 8260B	
1,2,3-Trichlorobenzene	< 0.12	0.12	mg/kg dry	1	B0E0371	5/21/10	5/21/10	EPA 8260B	
1,2,3-Trichloropropane	< 0.062	0.062	mg/kg dry	1	B0E0371	5/21/10	5/21/10	EPA 8260B	
1,2,4-Trichlorobenzene	< 0.062	0.062	mg/kg dry	1	B0E0371	5/21/10	5/21/10	EPA 8260B	
1,2,4-Trimethylbenzene	< 0.15	0.15	mg/kg dry	1	B0E0371	5/21/10	5/21/10	EPA 8260B	
1,2-Dibromo-3-chloropropane	< 0.62	0.62	mg/kg dry	1	B0E0371	5/21/10	5/21/10	EPA 8260B	
1,2-Dibromoethane	< 0.062	0.062	mg/kg dry	1	B0E0371	5/21/10	5/21/10	EPA 8260B	
1,2-Dichlorobenzene	< 0.062	0.062	mg/kg dry	1	B0E0371	5/21/10	5/21/10	EPA 8260B	
1,2-Dichloroethane	< 0.062	0.062	mg/kg dry	1	B0E0371	5/21/10	5/21/10	EPA 8260B	
1,2-Dichloropropane	< 0.062	0.062	mg/kg dry	1	B0E0371	5/21/10	5/21/10	EPA 8260B	
1,3,5-Trimethylbenzene	< 0.15	0.15	mg/kg dry	1	B0E0371	5/21/10	5/21/10	EPA 8260B	
1,3-Dichlorobenzene	< 0.062	0.062	mg/kg dry	1	B0E0371	5/21/10	5/21/10	EPA 8260B	
1,3-Dichloropropane	< 0.062	0.062	mg/kg dry	1	B0E0371	5/21/10	5/21/10	EPA 8260B	
1,4-Dichlorobenzene	< 0.062	0.062	mg/kg dry	1	B0E0371	5/21/10	5/21/10	EPA 8260B	
2,2-Dichloropropane	< 0.062	0.062	mg/kg dry	1	B0E0371	5/21/10	5/21/10	EPA 8260B	
2-Butanone (MEK)	< 0.62	0.62	mg/kg dry	1	B0E0371	5/21/10	5/21/10	EPA 8260B	
2-Chlorotoluene	< 0.15	0.15	mg/kg dry	1	B0E0371	5/21/10	5/21/10	EPA 8260B	
4-Chlorotoluene	< 0.15	0.15	mg/kg dry	1	B0E0371	5/21/10	5/21/10	EPA 8260B	
4-Isopropyltoluene	< 0.062	0.062	mg/kg dry	1	B0E0371	5/21/10	5/21/10	EPA 8260B	

Braun Intertec-Bloomington  
11001 Hampshire Ave. South  
Bloomington, MN 55438

Client Ref: Holasek Property, Medina MN  
Client Contact: Mr. Jeremy Hansen  
PO Number: BL-10-06413

Report #: 1002579  
Project Mgr: Thomas P. Wagner  
Account ID: BL2004

## ST-2 (12.5)

1002579-04 (Soil)

5/20/10 12:29

### Volatile Organic Compounds

Analyte	Result	MRL	Units	Dilution	Batch	Prepared	Analyzed	Method	Notes
Acetone	< 0.93	0.93	mg/kg dry	1	B0E0371	5/21/10	5/21/10	EPA 8260B	
Allyl Chloride	< 0.062	0.062	mg/kg dry	1	B0E0371	5/21/10	5/21/10	EPA 8260B	
Benzene	< 0.062	0.062	mg/kg dry	1	B0E0371	5/21/10	5/21/10	EPA 8260B	
Bromobenzene	< 0.062	0.062	mg/kg dry	1	B0E0371	5/21/10	5/21/10	EPA 8260B	
Bromochloromethane	< 0.062	0.062	mg/kg dry	1	B0E0371	5/21/10	5/21/10	EPA 8260B	
Bromodichloromethane	< 0.062	0.062	mg/kg dry	1	B0E0371	5/21/10	5/21/10	EPA 8260B	
Bromoform	< 0.31	0.31	mg/kg dry	1	B0E0371	5/21/10	5/21/10	EPA 8260B	
Bromomethane	< 0.062	0.062	mg/kg dry	1	B0E0371	5/21/10	5/21/10	EPA 8260B	
Carbon Tetrachloride	< 0.062	0.062	mg/kg dry	1	B0E0371	5/21/10	5/21/10	EPA 8260B	
Chlorobenzene	< 0.062	0.062	mg/kg dry	1	B0E0371	5/21/10	5/21/10	EPA 8260B	
Chlorodibromomethane	< 0.062	0.062	mg/kg dry	1	B0E0371	5/21/10	5/21/10	EPA 8260B	
Chloroethane	< 0.062	0.062	mg/kg dry	1	B0E0371	5/21/10	5/21/10	EPA 8260B	
Chloroform	< 0.062	0.062	mg/kg dry	1	B0E0371	5/21/10	5/21/10	EPA 8260B	
Chloromethane	< 0.062	0.062	mg/kg dry	1	B0E0371	5/21/10	5/21/10	EPA 8260B	
cis-1,2-Dichloroethene	< 0.062	0.062	mg/kg dry	1	B0E0371	5/21/10	5/21/10	EPA 8260B	
cis-1,3-Dichloropropene	< 0.062	0.062	mg/kg dry	1	B0E0371	5/21/10	5/21/10	EPA 8260B	
Dibromomethane	< 0.062	0.062	mg/kg dry	1	B0E0371	5/21/10	5/21/10	EPA 8260B	
Dichlorodifluoromethane	< 0.062	0.062	mg/kg dry	1	B0E0371	5/21/10	5/21/10	EPA 8260B	
Dichlorofluoromethane	< 0.062	0.062	mg/kg dry	1	B0E0371	5/21/10	5/21/10	EPA 8260B	
Ethyl Ether	< 0.062	0.062	mg/kg dry	1	B0E0371	5/21/10	5/21/10	EPA 8260B	
Ethylbenzene	< 0.062	0.062	mg/kg dry	1	B0E0371	5/21/10	5/21/10	EPA 8260B	
Hexachlorobutadiene	< 0.12	0.12	mg/kg dry	1	B0E0371	5/21/10	5/21/10	EPA 8260B	
Isopropylbenzene	< 0.15	0.15	mg/kg dry	1	B0E0371	5/21/10	5/21/10	EPA 8260B	
m,p-Xylenes	< 0.062	0.062	mg/kg dry	1	B0E0371	5/21/10	5/21/10	EPA 8260B	
Methyl Isobutyl Ketone	< 0.31	0.31	mg/kg dry	1	B0E0371	5/21/10	5/21/10	EPA 8260B	
Methylene chloride	< 0.31	0.31	mg/kg dry	1	B0E0371	5/21/10	5/21/10	EPA 8260B	
Methyl-t-butyl ether	< 0.062	0.062	mg/kg dry	1	B0E0371	5/21/10	5/21/10	EPA 8260B	
Naphthalene	< 0.15	0.15	mg/kg dry	1	B0E0371	5/21/10	5/21/10	EPA 8260B	
n-Butylbenzene	< 0.15	0.15	mg/kg dry	1	B0E0371	5/21/10	5/21/10	EPA 8260B	
n-Propylbenzene	< 0.15	0.15	mg/kg dry	1	B0E0371	5/21/10	5/21/10	EPA 8260B	
o-Xylene	< 0.062	0.062	mg/kg dry	1	B0E0371	5/21/10	5/21/10	EPA 8260B	
sec-Butylbenzene	< 0.15	0.15	mg/kg dry	1	B0E0371	5/21/10	5/21/10	EPA 8260B	
Styrene	< 0.15	0.15	mg/kg dry	1	B0E0371	5/21/10	5/21/10	EPA 8260B	
tert-Butylbenzene	< 0.15	0.15	mg/kg dry	1	B0E0371	5/21/10	5/21/10	EPA 8260B	
Tetrachloroethene	< 0.12	0.12	mg/kg dry	1	B0E0371	5/21/10	5/21/10	EPA 8260B	
Tetrahydrofuran	< 0.31	0.31	mg/kg dry	1	B0E0371	5/21/10	5/21/10	EPA 8260B	

Braun Intertec-Bloomington  
11001 Hampshire Ave. South  
Bloomington, MN 55438

Client Ref: Holasek Property, Medina MN  
Client Contact: Mr. Jeremy Hansen  
PO Number: BL-10-06413

Report #: 1002579  
Project Mgr: Thomas P. Wagner  
Account ID: BL2004

## ST-2 (12.5)

1002579-04 (Soil)

5/20/10 12:29

### Volatile Organic Compounds

Analyte	Result	MRL	Units	Dilution	Batch	Prepared	Analyzed	Method	Notes
Toluene	< 0.062	0.062	mg/kg dry	1	B0E0371	5/21/10	5/21/10	EPA 8260B	
trans-1,2-Dichloroethene	< 0.062	0.062	mg/kg dry	1	B0E0371	5/21/10	5/21/10	EPA 8260B	
trans-1,3-Dichloropropene	< 0.062	0.062	mg/kg dry	1	B0E0371	5/21/10	5/21/10	EPA 8260B	
Trichloroethene	< 0.062	0.062	mg/kg dry	1	B0E0371	5/21/10	5/21/10	EPA 8260B	
Trichlorofluoromethane	< 0.062	0.062	mg/kg dry	1	B0E0371	5/21/10	5/21/10	EPA 8260B	
Vinyl chloride	< 0.15	0.15	mg/kg dry	1	B0E0371	5/21/10	5/21/10	EPA 8260B	
<i>Surrogate: 1,2-Dichloroethane-d4</i>	<i>108 %</i>	<i>Limits: 80-120%</i>			<i>B0E0371</i>	<i>5/21/10</i>	<i>5/21/10</i>	<i>EPA 8260B</i>	
<i>Surrogate: 4-Bromofluorobenzene</i>	<i>88.7 %</i>	<i>Limits: 80-120%</i>			<i>B0E0371</i>	<i>5/21/10</i>	<i>5/21/10</i>	<i>EPA 8260B</i>	
<i>Surrogate: Dibromofluoromethane</i>	<i>102 %</i>	<i>Limits: 80-120%</i>			<i>B0E0371</i>	<i>5/21/10</i>	<i>5/21/10</i>	<i>EPA 8260B</i>	
<i>Surrogate: Toluene-d8</i>	<i>99.6 %</i>	<i>Limits: 80-120%</i>			<i>B0E0371</i>	<i>5/21/10</i>	<i>5/21/10</i>	<i>EPA 8260B</i>	

Braun Intertec-Bloomington  
11001 Hampshire Ave. South  
Bloomington, MN 55438

Client Ref: Holasek Property, Medina MN  
Client Contact: Mr. Jeremy Hansen  
PO Number: BL-10-06413

Report #: 1002579  
Project Mgr: Thomas P. Wagner  
Account ID: BL2004

## ST-11 (2-4)

1002579-05 (Soil)

5/20/10 13:57

### Classical Chemistry Parameters

Analyte	Result	MRL	Units	Dilution	Batch	Prepared	Analyzed	Method	Notes
% Solids	83	0.050	% Wt	1	B0E0370	5/21/10	5/24/10	EPA 3545A 11.4	

### Total Petroleum Hydrocarbons

Analyte	Result	MRL	Units	Dilution	Batch	Prepared	Analyzed	Method	Notes
Diesel Range Organics (DRO)	< 9.8	9.8	mg/kg dry	1	B0E0366	5/21/10	5/27/10	WI DRO (95)	
Gasoline Range Organics (GRO)	< 12	12	mg/kg dry	1	B0E0364	5/21/10	5/21/10	WI GRO (95)	

### Volatile Organic Compounds

Analyte	Result	MRL	Units	Dilution	Batch	Prepared	Analyzed	Method	Notes
1,1,1,2-Tetrachloroethane	< 0.060	0.060	mg/kg dry	1	B0E0371	5/21/10	5/21/10	EPA 8260B	
1,1,1-Trichloroethane	< 0.060	0.060	mg/kg dry	1	B0E0371	5/21/10	5/21/10	EPA 8260B	
1,1,2,2-Tetrachloroethane	< 0.060	0.060	mg/kg dry	1	B0E0371	5/21/10	5/21/10	EPA 8260B	
1,1,2-Trichloroethane	< 0.060	0.060	mg/kg dry	1	B0E0371	5/21/10	5/21/10	EPA 8260B	
1,1,2-Trichlorotrifluoroethane	< 0.060	0.060	mg/kg dry	1	B0E0371	5/21/10	5/21/10	EPA 8260B	
1,1-Dichloroethane	< 0.060	0.060	mg/kg dry	1	B0E0371	5/21/10	5/21/10	EPA 8260B	
1,1-Dichloroethene	< 0.060	0.060	mg/kg dry	1	B0E0371	5/21/10	5/21/10	EPA 8260B	
1,1-Dichloropropene	< 0.060	0.060	mg/kg dry	1	B0E0371	5/21/10	5/21/10	EPA 8260B	
1,2,3-Trichlorobenzene	< 0.12	0.12	mg/kg dry	1	B0E0371	5/21/10	5/21/10	EPA 8260B	
1,2,3-Trichloropropane	< 0.060	0.060	mg/kg dry	1	B0E0371	5/21/10	5/21/10	EPA 8260B	
1,2,4-Trichlorobenzene	< 0.060	0.060	mg/kg dry	1	B0E0371	5/21/10	5/21/10	EPA 8260B	
1,2,4-Trimethylbenzene	< 0.15	0.15	mg/kg dry	1	B0E0371	5/21/10	5/21/10	EPA 8260B	
1,2-Dibromo-3-chloropropane	< 0.60	0.60	mg/kg dry	1	B0E0371	5/21/10	5/21/10	EPA 8260B	
1,2-Dibromoethane	< 0.060	0.060	mg/kg dry	1	B0E0371	5/21/10	5/21/10	EPA 8260B	
1,2-Dichlorobenzene	< 0.060	0.060	mg/kg dry	1	B0E0371	5/21/10	5/21/10	EPA 8260B	
1,2-Dichloroethane	< 0.060	0.060	mg/kg dry	1	B0E0371	5/21/10	5/21/10	EPA 8260B	
1,2-Dichloropropane	< 0.060	0.060	mg/kg dry	1	B0E0371	5/21/10	5/21/10	EPA 8260B	
1,3,5-Trimethylbenzene	< 0.15	0.15	mg/kg dry	1	B0E0371	5/21/10	5/21/10	EPA 8260B	
1,3-Dichlorobenzene	< 0.060	0.060	mg/kg dry	1	B0E0371	5/21/10	5/21/10	EPA 8260B	
1,3-Dichloropropane	< 0.060	0.060	mg/kg dry	1	B0E0371	5/21/10	5/21/10	EPA 8260B	
1,4-Dichlorobenzene	< 0.060	0.060	mg/kg dry	1	B0E0371	5/21/10	5/21/10	EPA 8260B	
2,2-Dichloropropane	< 0.060	0.060	mg/kg dry	1	B0E0371	5/21/10	5/21/10	EPA 8260B	
2-Butanone (MEK)	< 0.60	0.60	mg/kg dry	1	B0E0371	5/21/10	5/21/10	EPA 8260B	
2-Chlorotoluene	< 0.15	0.15	mg/kg dry	1	B0E0371	5/21/10	5/21/10	EPA 8260B	
4-Chlorotoluene	< 0.15	0.15	mg/kg dry	1	B0E0371	5/21/10	5/21/10	EPA 8260B	
4-Isopropyltoluene	< 0.060	0.060	mg/kg dry	1	B0E0371	5/21/10	5/21/10	EPA 8260B	

Braun Intertec-Bloomington  
11001 Hampshire Ave. South  
Bloomington, MN 55438

Client Ref: Holasek Property, Medina MN  
Client Contact: Mr. Jeremy Hansen  
PO Number: BL-10-06413

Report #: 1002579  
Project Mgr: Thomas P. Wagner  
Account ID: BL2004

**ST-11 (2-4)**  
**1002579-05 (Soil)**  
**5/20/10 13:57**

## Volatile Organic Compounds

Analyte	Result	MRL	Units	Dilution	Batch	Prepared	Analyzed	Method	Notes
Acetone	< 0.90	0.90	mg/kg dry	1	B0E0371	5/21/10	5/21/10	EPA 8260B	
Allyl Chloride	< 0.060	0.060	mg/kg dry	1	B0E0371	5/21/10	5/21/10	EPA 8260B	
Benzene	< 0.060	0.060	mg/kg dry	1	B0E0371	5/21/10	5/21/10	EPA 8260B	
Bromobenzene	< 0.060	0.060	mg/kg dry	1	B0E0371	5/21/10	5/21/10	EPA 8260B	
Bromochloromethane	< 0.060	0.060	mg/kg dry	1	B0E0371	5/21/10	5/21/10	EPA 8260B	
Bromodichloromethane	< 0.060	0.060	mg/kg dry	1	B0E0371	5/21/10	5/21/10	EPA 8260B	
Bromoform	< 0.30	0.30	mg/kg dry	1	B0E0371	5/21/10	5/21/10	EPA 8260B	
Bromomethane	< 0.060	0.060	mg/kg dry	1	B0E0371	5/21/10	5/21/10	EPA 8260B	
Carbon Tetrachloride	< 0.060	0.060	mg/kg dry	1	B0E0371	5/21/10	5/21/10	EPA 8260B	
Chlorobenzene	< 0.060	0.060	mg/kg dry	1	B0E0371	5/21/10	5/21/10	EPA 8260B	
Chlorodibromomethane	< 0.060	0.060	mg/kg dry	1	B0E0371	5/21/10	5/21/10	EPA 8260B	
Chloroethane	< 0.060	0.060	mg/kg dry	1	B0E0371	5/21/10	5/21/10	EPA 8260B	
Chloroform	< 0.060	0.060	mg/kg dry	1	B0E0371	5/21/10	5/21/10	EPA 8260B	
Chloromethane	< 0.060	0.060	mg/kg dry	1	B0E0371	5/21/10	5/21/10	EPA 8260B	
cis-1,2-Dichloroethene	< 0.060	0.060	mg/kg dry	1	B0E0371	5/21/10	5/21/10	EPA 8260B	
cis-1,3-Dichloropropene	< 0.060	0.060	mg/kg dry	1	B0E0371	5/21/10	5/21/10	EPA 8260B	
Dibromomethane	< 0.060	0.060	mg/kg dry	1	B0E0371	5/21/10	5/21/10	EPA 8260B	
Dichlorodifluoromethane	< 0.060	0.060	mg/kg dry	1	B0E0371	5/21/10	5/21/10	EPA 8260B	
Dichlorofluoromethane	< 0.060	0.060	mg/kg dry	1	B0E0371	5/21/10	5/21/10	EPA 8260B	
Ethyl Ether	< 0.060	0.060	mg/kg dry	1	B0E0371	5/21/10	5/21/10	EPA 8260B	
Ethylbenzene	< 0.060	0.060	mg/kg dry	1	B0E0371	5/21/10	5/21/10	EPA 8260B	
Hexachlorobutadiene	< 0.12	0.12	mg/kg dry	1	B0E0371	5/21/10	5/21/10	EPA 8260B	
Isopropylbenzene	< 0.15	0.15	mg/kg dry	1	B0E0371	5/21/10	5/21/10	EPA 8260B	
m,p-Xylenes	< 0.060	0.060	mg/kg dry	1	B0E0371	5/21/10	5/21/10	EPA 8260B	
Methyl Isobutyl Ketone	< 0.30	0.30	mg/kg dry	1	B0E0371	5/21/10	5/21/10	EPA 8260B	
Methylene chloride	< 0.30	0.30	mg/kg dry	1	B0E0371	5/21/10	5/21/10	EPA 8260B	
Methyl-t-butyl ether	< 0.060	0.060	mg/kg dry	1	B0E0371	5/21/10	5/21/10	EPA 8260B	
Naphthalene	< 0.15	0.15	mg/kg dry	1	B0E0371	5/21/10	5/21/10	EPA 8260B	
n-Butylbenzene	< 0.15	0.15	mg/kg dry	1	B0E0371	5/21/10	5/21/10	EPA 8260B	
n-Propylbenzene	< 0.15	0.15	mg/kg dry	1	B0E0371	5/21/10	5/21/10	EPA 8260B	
o-Xylene	< 0.060	0.060	mg/kg dry	1	B0E0371	5/21/10	5/21/10	EPA 8260B	
sec-Butylbenzene	< 0.15	0.15	mg/kg dry	1	B0E0371	5/21/10	5/21/10	EPA 8260B	
Styrene	< 0.15	0.15	mg/kg dry	1	B0E0371	5/21/10	5/21/10	EPA 8260B	
tert-Butylbenzene	< 0.15	0.15	mg/kg dry	1	B0E0371	5/21/10	5/21/10	EPA 8260B	
Tetrachloroethene	< 0.12	0.12	mg/kg dry	1	B0E0371	5/21/10	5/21/10	EPA 8260B	
Tetrahydrofuran	< 0.30	0.30	mg/kg dry	1	B0E0371	5/21/10	5/21/10	EPA 8260B	

Braun Intertec-Bloomington  
11001 Hampshire Ave. South  
Bloomington, MN 55438

Client Ref: Holasek Property, Medina MN  
Client Contact: Mr. Jeremy Hansen  
PO Number: BL-10-06413

Report #: 1002579  
Project Mgr: Thomas P. Wagner  
Account ID: BL2004

## ST-11 (2-4)

1002579-05 (Soil)

5/20/10 13:57

### Volatile Organic Compounds

Analyte	Result	MRL	Units	Dilution	Batch	Prepared	Analyzed	Method	Notes
Toluene	< 0.060	0.060	mg/kg dry	1	B0E0371	5/21/10	5/21/10	EPA 8260B	
trans-1,2-Dichloroethene	< 0.060	0.060	mg/kg dry	1	B0E0371	5/21/10	5/21/10	EPA 8260B	
trans-1,3-Dichloropropene	< 0.060	0.060	mg/kg dry	1	B0E0371	5/21/10	5/21/10	EPA 8260B	
Trichloroethene	< 0.060	0.060	mg/kg dry	1	B0E0371	5/21/10	5/21/10	EPA 8260B	
Trichlorofluoromethane	< 0.060	0.060	mg/kg dry	1	B0E0371	5/21/10	5/21/10	EPA 8260B	
Vinyl chloride	< 0.15	0.15	mg/kg dry	1	B0E0371	5/21/10	5/21/10	EPA 8260B	
<i>Surrogate: 1,2-Dichloroethane-d4</i>	<i>110 %</i>	<i>Limits: 80-120%</i>			<i>B0E0371</i>	<i>5/21/10</i>	<i>5/21/10</i>	<i>EPA 8260B</i>	
<i>Surrogate: 4-Bromofluorobenzene</i>	<i>90.4 %</i>	<i>Limits: 80-120%</i>			<i>B0E0371</i>	<i>5/21/10</i>	<i>5/21/10</i>	<i>EPA 8260B</i>	
<i>Surrogate: Dibromofluoromethane</i>	<i>102 %</i>	<i>Limits: 80-120%</i>			<i>B0E0371</i>	<i>5/21/10</i>	<i>5/21/10</i>	<i>EPA 8260B</i>	
<i>Surrogate: Toluene-d8</i>	<i>99.8 %</i>	<i>Limits: 80-120%</i>			<i>B0E0371</i>	<i>5/21/10</i>	<i>5/21/10</i>	<i>EPA 8260B</i>	

Braun Intertec-Bloomington  
11001 Hampshire Ave. South  
Bloomington, MN 55438

Client Ref: Holasek Property, Medina MN  
Client Contact: Mr. Jeremy Hansen  
PO Number: BL-10-06413

Report #: 1002579  
Project Mgr: Thomas P. Wagner  
Account ID: BL2004

**ST-7 (2-4)**  
**1002579-06 (Soil)**  
**5/20/10 15:09**

### Classical Chemistry Parameters

Analyte	Result	MRL	Units	Dilution	Batch	Prepared	Analyzed	Method	Notes
% Solids	82	0.050	% Wt	1	B0E0370	5/21/10	5/24/10	EPA 3545A 11.4	

### Total Petroleum Hydrocarbons

Analyte	Result	MRL	Units	Dilution	Batch	Prepared	Analyzed	Method	Notes
Diesel Range Organics (DRO)	< 9.7	9.7	mg/kg dry	1	B0E0366	5/21/10	5/27/10	WI DRO (95)	
Gasoline Range Organics (GRO)	< 12	12	mg/kg dry	1	B0E0364	5/21/10	5/21/10	WI GRO (95)	

### Volatile Organic Compounds

Analyte	Result	MRL	Units	Dilution	Batch	Prepared	Analyzed	Method	Notes
1,1,1,2-Tetrachloroethane	< 0.061	0.061	mg/kg dry	1	B0E0371	5/21/10	5/21/10	EPA 8260B	
1,1,1-Trichloroethane	< 0.061	0.061	mg/kg dry	1	B0E0371	5/21/10	5/21/10	EPA 8260B	
1,1,2,2-Tetrachloroethane	< 0.061	0.061	mg/kg dry	1	B0E0371	5/21/10	5/21/10	EPA 8260B	
1,1,2-Trichloroethane	< 0.061	0.061	mg/kg dry	1	B0E0371	5/21/10	5/21/10	EPA 8260B	
1,1,2-Trichlorotrifluoroethane	< 0.061	0.061	mg/kg dry	1	B0E0371	5/21/10	5/21/10	EPA 8260B	
1,1-Dichloroethane	< 0.061	0.061	mg/kg dry	1	B0E0371	5/21/10	5/21/10	EPA 8260B	
1,1-Dichloroethene	< 0.061	0.061	mg/kg dry	1	B0E0371	5/21/10	5/21/10	EPA 8260B	
1,1-Dichloropropene	< 0.061	0.061	mg/kg dry	1	B0E0371	5/21/10	5/21/10	EPA 8260B	
1,2,3-Trichlorobenzene	< 0.12	0.12	mg/kg dry	1	B0E0371	5/21/10	5/21/10	EPA 8260B	
1,2,3-Trichloropropane	< 0.061	0.061	mg/kg dry	1	B0E0371	5/21/10	5/21/10	EPA 8260B	
1,2,4-Trichlorobenzene	< 0.061	0.061	mg/kg dry	1	B0E0371	5/21/10	5/21/10	EPA 8260B	
1,2,4-Trimethylbenzene	< 0.15	0.15	mg/kg dry	1	B0E0371	5/21/10	5/21/10	EPA 8260B	
1,2-Dibromo-3-chloropropane	< 0.61	0.61	mg/kg dry	1	B0E0371	5/21/10	5/21/10	EPA 8260B	
1,2-Dibromoethane	< 0.061	0.061	mg/kg dry	1	B0E0371	5/21/10	5/21/10	EPA 8260B	
1,2-Dichlorobenzene	< 0.061	0.061	mg/kg dry	1	B0E0371	5/21/10	5/21/10	EPA 8260B	
1,2-Dichloroethane	< 0.061	0.061	mg/kg dry	1	B0E0371	5/21/10	5/21/10	EPA 8260B	
1,2-Dichloropropane	< 0.061	0.061	mg/kg dry	1	B0E0371	5/21/10	5/21/10	EPA 8260B	
1,3,5-Trimethylbenzene	< 0.15	0.15	mg/kg dry	1	B0E0371	5/21/10	5/21/10	EPA 8260B	
1,3-Dichlorobenzene	< 0.061	0.061	mg/kg dry	1	B0E0371	5/21/10	5/21/10	EPA 8260B	
1,3-Dichloropropane	< 0.061	0.061	mg/kg dry	1	B0E0371	5/21/10	5/21/10	EPA 8260B	
1,4-Dichlorobenzene	< 0.061	0.061	mg/kg dry	1	B0E0371	5/21/10	5/21/10	EPA 8260B	
2,2-Dichloropropane	< 0.061	0.061	mg/kg dry	1	B0E0371	5/21/10	5/21/10	EPA 8260B	
2-Butanone (MEK)	< 0.61	0.61	mg/kg dry	1	B0E0371	5/21/10	5/21/10	EPA 8260B	
2-Chlorotoluene	< 0.15	0.15	mg/kg dry	1	B0E0371	5/21/10	5/21/10	EPA 8260B	
4-Chlorotoluene	< 0.15	0.15	mg/kg dry	1	B0E0371	5/21/10	5/21/10	EPA 8260B	
4-Isopropyltoluene	< 0.061	0.061	mg/kg dry	1	B0E0371	5/21/10	5/21/10	EPA 8260B	

Braun Intertec-Bloomington  
11001 Hampshire Ave. South  
Bloomington, MN 55438

Client Ref: Holasek Property, Medina MN  
Client Contact: Mr. Jeremy Hansen  
PO Number: BL-10-06413

Report #: 1002579  
Project Mgr: Thomas P. Wagner  
Account ID: BL2004

**ST-7 (2-4)**  
**1002579-06 (Soil)**  
**5/20/10 15:09**

## Volatile Organic Compounds

Analyte	Result	MRL	Units	Dilution	Batch	Prepared	Analyzed	Method	Notes
Acetone	< 0.92	0.92	mg/kg dry	1	B0E0371	5/21/10	5/21/10	EPA 8260B	
Allyl Chloride	< 0.061	0.061	mg/kg dry	1	B0E0371	5/21/10	5/21/10	EPA 8260B	
Benzene	< 0.061	0.061	mg/kg dry	1	B0E0371	5/21/10	5/21/10	EPA 8260B	
Bromobenzene	< 0.061	0.061	mg/kg dry	1	B0E0371	5/21/10	5/21/10	EPA 8260B	
Bromochloromethane	< 0.061	0.061	mg/kg dry	1	B0E0371	5/21/10	5/21/10	EPA 8260B	
Bromodichloromethane	< 0.061	0.061	mg/kg dry	1	B0E0371	5/21/10	5/21/10	EPA 8260B	
Bromoform	< 0.31	0.31	mg/kg dry	1	B0E0371	5/21/10	5/21/10	EPA 8260B	
Bromomethane	< 0.061	0.061	mg/kg dry	1	B0E0371	5/21/10	5/21/10	EPA 8260B	
Carbon Tetrachloride	< 0.061	0.061	mg/kg dry	1	B0E0371	5/21/10	5/21/10	EPA 8260B	
Chlorobenzene	< 0.061	0.061	mg/kg dry	1	B0E0371	5/21/10	5/21/10	EPA 8260B	
Chlorodibromomethane	< 0.061	0.061	mg/kg dry	1	B0E0371	5/21/10	5/21/10	EPA 8260B	
Chloroethane	< 0.061	0.061	mg/kg dry	1	B0E0371	5/21/10	5/21/10	EPA 8260B	
Chloroform	< 0.061	0.061	mg/kg dry	1	B0E0371	5/21/10	5/21/10	EPA 8260B	
Chloromethane	< 0.061	0.061	mg/kg dry	1	B0E0371	5/21/10	5/21/10	EPA 8260B	
cis-1,2-Dichloroethene	< 0.061	0.061	mg/kg dry	1	B0E0371	5/21/10	5/21/10	EPA 8260B	
cis-1,3-Dichloropropene	< 0.061	0.061	mg/kg dry	1	B0E0371	5/21/10	5/21/10	EPA 8260B	
Dibromomethane	< 0.061	0.061	mg/kg dry	1	B0E0371	5/21/10	5/21/10	EPA 8260B	
Dichlorodifluoromethane	< 0.061	0.061	mg/kg dry	1	B0E0371	5/21/10	5/21/10	EPA 8260B	
Dichlorofluoromethane	< 0.061	0.061	mg/kg dry	1	B0E0371	5/21/10	5/21/10	EPA 8260B	
Ethyl Ether	< 0.061	0.061	mg/kg dry	1	B0E0371	5/21/10	5/21/10	EPA 8260B	
Ethylbenzene	< 0.061	0.061	mg/kg dry	1	B0E0371	5/21/10	5/21/10	EPA 8260B	
Hexachlorobutadiene	< 0.12	0.12	mg/kg dry	1	B0E0371	5/21/10	5/21/10	EPA 8260B	
Isopropylbenzene	< 0.15	0.15	mg/kg dry	1	B0E0371	5/21/10	5/21/10	EPA 8260B	
m,p-Xylenes	< 0.061	0.061	mg/kg dry	1	B0E0371	5/21/10	5/21/10	EPA 8260B	
Methyl Isobutyl Ketone	< 0.31	0.31	mg/kg dry	1	B0E0371	5/21/10	5/21/10	EPA 8260B	
Methylene chloride	< 0.31	0.31	mg/kg dry	1	B0E0371	5/21/10	5/21/10	EPA 8260B	
Methyl-t-butyl ether	< 0.061	0.061	mg/kg dry	1	B0E0371	5/21/10	5/21/10	EPA 8260B	
Naphthalene	< 0.15	0.15	mg/kg dry	1	B0E0371	5/21/10	5/21/10	EPA 8260B	
n-Butylbenzene	< 0.15	0.15	mg/kg dry	1	B0E0371	5/21/10	5/21/10	EPA 8260B	
n-Propylbenzene	< 0.15	0.15	mg/kg dry	1	B0E0371	5/21/10	5/21/10	EPA 8260B	
o-Xylene	< 0.061	0.061	mg/kg dry	1	B0E0371	5/21/10	5/21/10	EPA 8260B	
sec-Butylbenzene	< 0.15	0.15	mg/kg dry	1	B0E0371	5/21/10	5/21/10	EPA 8260B	
Styrene	< 0.15	0.15	mg/kg dry	1	B0E0371	5/21/10	5/21/10	EPA 8260B	
tert-Butylbenzene	< 0.15	0.15	mg/kg dry	1	B0E0371	5/21/10	5/21/10	EPA 8260B	
Tetrachloroethene	< 0.12	0.12	mg/kg dry	1	B0E0371	5/21/10	5/21/10	EPA 8260B	
Tetrahydrofuran	< 0.31	0.31	mg/kg dry	1	B0E0371	5/21/10	5/21/10	EPA 8260B	

Braun Intertec-Bloomington  
11001 Hampshire Ave. South  
Bloomington, MN 55438

Client Ref: Holasek Property, Medina MN  
Client Contact: Mr. Jeremy Hansen  
PO Number: BL-10-06413

Report #: 1002579  
Project Mgr: Thomas P. Wagner  
Account ID: BL2004

**ST-7 (2-4)**  
**1002579-06 (Soil)**  
**5/20/10 15:09**

## Volatile Organic Compounds

Analyte	Result	MRL	Units	Dilution	Batch	Prepared	Analyzed	Method	Notes
Toluene	< 0.061	0.061	mg/kg dry	1	B0E0371	5/21/10	5/21/10	EPA 8260B	
trans-1,2-Dichloroethene	< 0.061	0.061	mg/kg dry	1	B0E0371	5/21/10	5/21/10	EPA 8260B	
trans-1,3-Dichloropropene	< 0.061	0.061	mg/kg dry	1	B0E0371	5/21/10	5/21/10	EPA 8260B	
Trichloroethene	< 0.061	0.061	mg/kg dry	1	B0E0371	5/21/10	5/21/10	EPA 8260B	
Trichlorofluoromethane	< 0.061	0.061	mg/kg dry	1	B0E0371	5/21/10	5/21/10	EPA 8260B	
Vinyl chloride	< 0.15	0.15	mg/kg dry	1	B0E0371	5/21/10	5/21/10	EPA 8260B	
<i>Surrogate: 1,2-Dichloroethane-d4</i>	<i>112 %</i>	<i>Limits: 80-120%</i>			<i>B0E0371</i>	<i>5/21/10</i>	<i>5/21/10</i>	<i>EPA 8260B</i>	
<i>Surrogate: 4-Bromofluorobenzene</i>	<i>88.2 %</i>	<i>Limits: 80-120%</i>			<i>B0E0371</i>	<i>5/21/10</i>	<i>5/21/10</i>	<i>EPA 8260B</i>	
<i>Surrogate: Dibromofluoromethane</i>	<i>106 %</i>	<i>Limits: 80-120%</i>			<i>B0E0371</i>	<i>5/21/10</i>	<i>5/21/10</i>	<i>EPA 8260B</i>	
<i>Surrogate: Toluene-d8</i>	<i>98.4 %</i>	<i>Limits: 80-120%</i>			<i>B0E0371</i>	<i>5/21/10</i>	<i>5/21/10</i>	<i>EPA 8260B</i>	

Braun Intertec-Bloomington  
11001 Hampshire Ave. South  
Bloomington, MN 55438

Client Ref: Holasek Property, Medina MN  
Client Contact: Mr. Jeremy Hansen  
PO Number: BL-10-06413

Report #: 1002579  
Project Mgr: Thomas P. Wagner  
Account ID: BL2004

## Classical Chemistry Parameters - Quality Control

### Batch B0E0370 - % Solids

#### Method Blank (B0E0370-BLK1)

Prepared: 05/21/10 Analyzed: 05/24/10

Analyte	Result	MRL	Units	Spike Level	Source Result	%REC	%REC Limits	RPD	RPD Limit	Notes
% Solids	< 0.050	0.050	% Wt	NA	NA	NA	NA	NA	NA	

#### Duplicate (B0E0370-DUP1)

Source: 1002491-01

Prepared: 05/21/10 Analyzed: 05/24/10

Analyte	Result	MRL	Units	Spike Level	Source Result	%REC	%REC Limits	RPD	RPD Limit	Notes
% Solids	90.8	0.050	% Wt	NA	91.0	NA	NA	0.184	20	

#### Standard Reference Material (B0E0370-SRM1)

Prepared: 05/21/10 Analyzed: 05/24/10

Analyte	Result	MRL	Units	Spike Level	Source Result	%REC	%REC Limits	RPD	RPD Limit	Notes
% Solids	89.8		% Wt	91.3	NA	98.3	90-110	NA	NA	

Braun Intertec-Bloomington  
11001 Hampshire Ave. South  
Bloomington, MN 55438

Client Ref: Holasek Property, Medina MN  
Client Contact: Mr. Jeremy Hansen  
PO Number: BL-10-06413

Report #: 1002579  
Project Mgr: Thomas P. Wagner  
Account ID: BL2004

## Total Petroleum Hydrocarbons - Quality Control

### Batch B0E0364 - WI GRO (95)

#### Method Blank (B0E0364-BLK1)

Prepared & Analyzed: 05/21/10

Analyte	Result	MRL	Units	Spike Level	Source Result	%REC	%REC Limits	RPD	RPD Limit	Notes
Gasoline Range Organics (GRO)	< 10	10	mg/kg	NA	NA	NA	NA	NA	NA	

#### Laboratory Control Sample (B0E0364-BS1)

Prepared & Analyzed: 05/21/10

Analyte	Result	MRL	Units	Spike Level	Source Result	%REC	%REC Limits	RPD	RPD Limit	Notes
Gasoline Range Organics (GRO)	17.4	10	mg/kg	16.0	NA	109	80-120	NA	NA	

#### Laboratory Control Sample Duplicate (B0E0364-BSD1)

Prepared: 05/21/10 Analyzed: 05/22/10

Analyte	Result	MRL	Units	Spike Level	Source Result	%REC	%REC Limits	RPD	RPD Limit	Notes
Gasoline Range Organics (GRO)	17.6	10	mg/kg	16.0	NA	110	80-120	0.909	20	

#### Duplicate (B0E0364-DUP1)

Source: 1002571-01

Prepared & Analyzed: 05/21/10

Analyte	Result	MRL	Units	Spike Level	Source Result	%REC	%REC Limits	RPD	RPD Limit	Notes
Gasoline Range Organics (GRO)	< 12	12	mg/kg dry	NA	ND	NA	NA	NA	20	

### Batch B0E0366 - WI DRO (95)

#### Method Blank (B0E0366-BLK1)

Prepared: 05/21/10 Analyzed: 05/27/10

Analyte	Result	MRL	Units	Spike Level	Source Result	%REC	%REC Limits	RPD	RPD Limit	Notes
Diesel Range Organics (DRO)	< 10	10	mg/kg	NA	NA	NA	NA	NA	NA	

#### Laboratory Control Sample (B0E0366-BS1)

Prepared: 05/21/10 Analyzed: 05/27/10

Analyte	Result	MRL	Units	Spike Level	Source Result	%REC	%REC Limits	RPD	RPD Limit	Notes
Diesel Range Organics (DRO)	28.7	10	mg/kg	32.0	NA	89.7	70-120	NA	NA	

#### Laboratory Control Sample Duplicate (B0E0366-BSD1)

Prepared: 05/21/10 Analyzed: 05/27/10

Analyte	Result	MRL	Units	Spike Level	Source Result	%REC	%REC Limits	RPD	RPD Limit	Notes
Diesel Range Organics (DRO)	28.5	10	mg/kg	32.0	NA	89.0	70-120	0.822	20	

#### Duplicate (B0E0366-DUP1)

Source: 1002552-02

Prepared: 05/21/10 Analyzed: 05/27/10

Analyte	Result	MRL	Units	Spike Level	Source Result	%REC	%REC Limits	RPD	RPD Limit	Notes
Diesel Range Organics (DRO)	< 11	11	mg/kg dry	NA	6.81	NA	NA	11.4	20	

Braun Intertec-Bloomington  
11001 Hampshire Ave. South  
Bloomington, MN 55438

Client Ref: Holasek Property, Medina MN  
Client Contact: Mr. Jeremy Hansen  
PO Number: BL-10-06413

Report #: 1002579  
Project Mgr: Thomas P. Wagner  
Account ID: BL2004

## Volatile Organic Compounds - Quality Control

### Batch B0E0371 - EPA 5035

#### Method Blank (B0E0371-BLK1)

Prepared & Analyzed: 05/21/10

Analyte	Result	MRL	Units	Spike Level	Source Result	%REC	%REC Limits	RPD	RPD Limit	Notes
1,1,1,2-Tetrachloroethane	< 0.050	0.050	mg/kg	NA	NA	NA	NA	NA	NA	
1,1,1-Trichloroethane	< 0.050	0.050	mg/kg	NA	NA	NA	NA	NA	NA	
1,1,2,2-Tetrachloroethane	< 0.050	0.050	mg/kg	NA	NA	NA	NA	NA	NA	
1,1,2-Trichloroethane	< 0.050	0.050	mg/kg	NA	NA	NA	NA	NA	NA	
1,1,2-Trichlorotrifluoroethane	< 0.050	0.050	mg/kg	NA	NA	NA	NA	NA	NA	
1,1-Dichloroethane	< 0.050	0.050	mg/kg	NA	NA	NA	NA	NA	NA	
1,1-Dichloroethene	< 0.050	0.050	mg/kg	NA	NA	NA	NA	NA	NA	
1,1-Dichloropropene	< 0.050	0.050	mg/kg	NA	NA	NA	NA	NA	NA	
1,2,3-Trichlorobenzene	< 0.10	0.10	mg/kg	NA	NA	NA	NA	NA	NA	
1,2,3-Trichloropropane	< 0.050	0.050	mg/kg	NA	NA	NA	NA	NA	NA	
1,2,4-Trichlorobenzene	< 0.050	0.050	mg/kg	NA	NA	NA	NA	NA	NA	
1,2,4-Trimethylbenzene	< 0.12	0.12	mg/kg	NA	NA	NA	NA	NA	NA	
1,2-Dibromo-3-chloropropane	< 0.50	0.50	mg/kg	NA	NA	NA	NA	NA	NA	
1,2-Dibromoethane	< 0.050	0.050	mg/kg	NA	NA	NA	NA	NA	NA	
1,2-Dichlorobenzene	< 0.050	0.050	mg/kg	NA	NA	NA	NA	NA	NA	
1,2-Dichloroethane	< 0.050	0.050	mg/kg	NA	NA	NA	NA	NA	NA	
1,2-Dichloropropane	< 0.050	0.050	mg/kg	NA	NA	NA	NA	NA	NA	
1,3,5-Trimethylbenzene	< 0.12	0.12	mg/kg	NA	NA	NA	NA	NA	NA	
1,3-Dichlorobenzene	< 0.050	0.050	mg/kg	NA	NA	NA	NA	NA	NA	
1,3-Dichloropropane	< 0.050	0.050	mg/kg	NA	NA	NA	NA	NA	NA	
1,4-Dichlorobenzene	< 0.050	0.050	mg/kg	NA	NA	NA	NA	NA	NA	
2,2-Dichloropropane	< 0.050	0.050	mg/kg	NA	NA	NA	NA	NA	NA	
2-Butanone (MEK)	< 0.50	0.50	mg/kg	NA	NA	NA	NA	NA	NA	
2-Chlorotoluene	< 0.12	0.12	mg/kg	NA	NA	NA	NA	NA	NA	
4-Chlorotoluene	< 0.12	0.12	mg/kg	NA	NA	NA	NA	NA	NA	
4-Isopropyltoluene	< 0.050	0.050	mg/kg	NA	NA	NA	NA	NA	NA	
Acetone	< 0.75	0.75	mg/kg	NA	NA	NA	NA	NA	NA	
Allyl Chloride	< 0.050	0.050	mg/kg	NA	NA	NA	NA	NA	NA	
Benzene	< 0.050	0.050	mg/kg	NA	NA	NA	NA	NA	NA	
Bromobenzene	< 0.050	0.050	mg/kg	NA	NA	NA	NA	NA	NA	
Bromochloromethane	< 0.050	0.050	mg/kg	NA	NA	NA	NA	NA	NA	
Bromodichloromethane	< 0.050	0.050	mg/kg	NA	NA	NA	NA	NA	NA	
Bromoform	< 0.25	0.25	mg/kg	NA	NA	NA	NA	NA	NA	
Bromomethane	< 0.050	0.050	mg/kg	NA	NA	NA	NA	NA	NA	
Carbon Tetrachloride	< 0.050	0.050	mg/kg	NA	NA	NA	NA	NA	NA	
Chlorobenzene	< 0.050	0.050	mg/kg	NA	NA	NA	NA	NA	NA	
Chlorodibromomethane	< 0.050	0.050	mg/kg	NA	NA	NA	NA	NA	NA	
Chloroethane	< 0.050	0.050	mg/kg	NA	NA	NA	NA	NA	NA	
Chloroform	< 0.050	0.050	mg/kg	NA	NA	NA	NA	NA	NA	

Braun Intertec-Bloomington  
11001 Hampshire Ave. South  
Bloomington, MN 55438

Client Ref: Holasek Property, Medina MN  
Client Contact: Mr. Jeremy Hansen  
PO Number: BL-10-06413

Report #: 1002579  
Project Mgr: Thomas P. Wagner  
Account ID: BL2004

## Volatile Organic Compounds - Quality Control

### Batch B0E0371 - EPA 5035

#### Method Blank (B0E0371-BLK1)

Prepared & Analyzed: 05/21/10

Analyte	Result	MRL	Units	Spike Level	Source Result	%REC	%REC Limits	RPD	RPD Limit	Notes
Chloromethane	< 0.050	0.050	mg/kg	NA	NA	NA	NA	NA	NA	
cis-1,2-Dichloroethene	< 0.050	0.050	mg/kg	NA	NA	NA	NA	NA	NA	
cis-1,3-Dichloropropene	< 0.050	0.050	mg/kg	NA	NA	NA	NA	NA	NA	
Dibromomethane	< 0.050	0.050	mg/kg	NA	NA	NA	NA	NA	NA	
Dichlorodifluoromethane	< 0.050	0.050	mg/kg	NA	NA	NA	NA	NA	NA	
Dichlorofluoromethane	< 0.050	0.050	mg/kg	NA	NA	NA	NA	NA	NA	
Ethyl Ether	< 0.050	0.050	mg/kg	NA	NA	NA	NA	NA	NA	
Ethylbenzene	< 0.050	0.050	mg/kg	NA	NA	NA	NA	NA	NA	
Hexachlorobutadiene	< 0.10	0.10	mg/kg	NA	NA	NA	NA	NA	NA	
Isopropylbenzene	< 0.12	0.12	mg/kg	NA	NA	NA	NA	NA	NA	
m,p-Xylenes	< 0.050	0.050	mg/kg	NA	NA	NA	NA	NA	NA	
Methyl Isobutyl Ketone	< 0.25	0.25	mg/kg	NA	NA	NA	NA	NA	NA	
Methylene chloride	< 0.25	0.25	mg/kg	NA	NA	NA	NA	NA	NA	
Methyl-t-butyl ether	< 0.050	0.050	mg/kg	NA	NA	NA	NA	NA	NA	
Naphthalene	< 0.12	0.12	mg/kg	NA	NA	NA	NA	NA	NA	
n-Butylbenzene	< 0.12	0.12	mg/kg	NA	NA	NA	NA	NA	NA	
n-Propylbenzene	< 0.12	0.12	mg/kg	NA	NA	NA	NA	NA	NA	
o-Xylene	< 0.050	0.050	mg/kg	NA	NA	NA	NA	NA	NA	
sec-Butylbenzene	< 0.12	0.12	mg/kg	NA	NA	NA	NA	NA	NA	
Styrene	< 0.12	0.12	mg/kg	NA	NA	NA	NA	NA	NA	
tert-Butylbenzene	< 0.12	0.12	mg/kg	NA	NA	NA	NA	NA	NA	
Tetrachloroethene	< 0.10	0.10	mg/kg	NA	NA	NA	NA	NA	NA	
Tetrahydrofuran	< 0.25	0.25	mg/kg	NA	NA	NA	NA	NA	NA	
Toluene	< 0.050	0.050	mg/kg	NA	NA	NA	NA	NA	NA	
trans-1,2-Dichloroethene	< 0.050	0.050	mg/kg	NA	NA	NA	NA	NA	NA	
trans-1,3-Dichloropropene	< 0.050	0.050	mg/kg	NA	NA	NA	NA	NA	NA	
Trichloroethene	< 0.050	0.050	mg/kg	NA	NA	NA	NA	NA	NA	
Trichlorofluoromethane	< 0.050	0.050	mg/kg	NA	NA	NA	NA	NA	NA	
Vinyl chloride	< 0.12	0.12	mg/kg	NA	NA	NA	NA	NA	NA	
Surrogate: 1,2-Dichloroethane-d4	25.1		ug/L	25.0	NA	101	80-120			
Surrogate: 4-Bromofluorobenzene	23.5		ug/L	25.0	NA	94.0	80-120			
Surrogate: Dibromofluoromethane	24.1		ug/L	25.0	NA	96.4	80-120			
Surrogate: Toluene-d8	24.5		ug/L	25.0	NA	97.9	80-120			

Braun Intertec-Bloomington  
11001 Hampshire Ave. South  
Bloomington, MN 55438

Client Ref: Holasek Property, Medina MN  
Client Contact: Mr. Jeremy Hansen  
PO Number: BL-10-06413

Report #: 1002579  
Project Mgr: Thomas P. Wagner  
Account ID: BL2004

## Volatile Organic Compounds - Quality Control

### Batch B0E0371 - EPA 5035

#### Laboratory Control Sample (B0E0371-BS1)

Prepared & Analyzed: 05/21/10

Analyte	Result	MRL	Units	Spike Level	Source Result	%REC	%REC Limits	RPD	RPD Limit	Notes
1,1,1,2-Tetrachloroethane	1.26	0.050	mg/kg	1.25	NA	100	75-125	NA	NA	
1,1,1-Trichloroethane	1.24	0.050	mg/kg	1.25	NA	98.8	75-125	NA	NA	
1,1,2,2-Tetrachloroethane	1.26	0.050	mg/kg	1.25	NA	101	75-125	NA	NA	
1,1,2-Trichloroethane	1.22	0.050	mg/kg	1.25	NA	97.0	75-125	NA	NA	
1,1,2-Trichlorotrifluoroethane	1.22	0.050	mg/kg	1.25	NA	97.4	75-125	NA	NA	
1,1-Dichloroethane	1.22	0.050	mg/kg	1.25	NA	97.7	75-125	NA	NA	
1,1-Dichloroethene	1.23	0.050	mg/kg	1.25	NA	98.2	75-125	NA	NA	
1,1-Dichloropropene	1.28	0.050	mg/kg	1.25	NA	102	75-125	NA	NA	
1,2,3-Trichlorobenzene	1.25	0.10	mg/kg	1.25	NA	100	75-125	NA	NA	
1,2,3-Trichloropropane	1.26	0.050	mg/kg	1.25	NA	101	75-125	NA	NA	
1,2,4-Trichlorobenzene	1.30	0.050	mg/kg	1.25	NA	104	75-125	NA	NA	
1,2,4-Trimethylbenzene	1.32	0.12	mg/kg	1.25	NA	105	75-125	NA	NA	
1,2-Dibromo-3-chloropropane	1.22	0.50	mg/kg	1.25	NA	97.2	75-125	NA	NA	
1,2-Dibromoethane	1.28	0.050	mg/kg	1.25	NA	102	75-125	NA	NA	
1,2-Dichlorobenzene	1.26	0.050	mg/kg	1.25	NA	101	75-125	NA	NA	
1,2-Dichloroethane	1.21	0.050	mg/kg	1.25	NA	96.4	75-125	NA	NA	
1,2-Dichloropropane	1.24	0.050	mg/kg	1.25	NA	99.2	75-125	NA	NA	
1,3,5-Trimethylbenzene	1.30	0.12	mg/kg	1.25	NA	104	75-125	NA	NA	
1,3-Dichlorobenzene	1.26	0.050	mg/kg	1.25	NA	101	75-125	NA	NA	
1,3-Dichloropropane	1.24	0.050	mg/kg	1.25	NA	98.6	75-125	NA	NA	
1,4-Dichlorobenzene	1.26	0.050	mg/kg	1.25	NA	100	75-125	NA	NA	
2,2-Dichloropropane	1.22	0.050	mg/kg	1.25	NA	97.4	75-125	NA	NA	
2-Butanone (MEK)	1.25	0.50	mg/kg	1.25	NA	99.5	75-140	NA	NA	
2-Chlorotoluene	1.28	0.12	mg/kg	1.25	NA	102	75-125	NA	NA	
4-Chlorotoluene	1.30	0.12	mg/kg	1.25	NA	104	75-125	NA	NA	
4-Isopropyltoluene	1.31	0.050	mg/kg	1.25	NA	105	75-125	NA	NA	
Acetone	1.23	0.75	mg/kg	1.25	NA	98.1	80-175	NA	NA	
Allyl Chloride	1.23	0.050	mg/kg	1.25	NA	98.0	75-125	NA	NA	
Benzene	1.25	0.050	mg/kg	1.25	NA	99.6	75-125	NA	NA	
Bromobenzene	1.26	0.050	mg/kg	1.25	NA	101	75-125	NA	NA	
Bromochloromethane	1.18	0.050	mg/kg	1.25	NA	94.2	75-125	NA	NA	
Bromodichloromethane	1.24	0.050	mg/kg	1.25	NA	99.4	75-125	NA	NA	
Bromoform	1.30	0.25	mg/kg	1.25	NA	104	75-125	NA	NA	
Bromomethane	1.24	0.050	mg/kg	1.25	NA	99.0	70-130	NA	NA	
Carbon Tetrachloride	1.24	0.050	mg/kg	1.25	NA	99.2	75-125	NA	NA	
Chlorobenzene	1.26	0.050	mg/kg	1.25	NA	100	75-125	NA	NA	
Chlorodibromomethane	1.29	0.050	mg/kg	1.25	NA	103	75-125	NA	NA	
Chloroethane	1.19	0.050	mg/kg	1.25	NA	94.9	75-125	NA	NA	
Chloroform	1.23	0.050	mg/kg	1.25	NA	98.0	75-125	NA	NA	

Braun Intertec-Bloomington  
11001 Hampshire Ave. South  
Bloomington, MN 55438

Client Ref: Holasek Property, Medina MN  
Client Contact: Mr. Jeremy Hansen  
PO Number: BL-10-06413

Report #: 1002579  
Project Mgr: Thomas P. Wagner  
Account ID: BL2004

## Volatile Organic Compounds - Quality Control

### Batch B0E0371 - EPA 5035

#### Laboratory Control Sample (B0E0371-BS1)

Prepared & Analyzed: 05/21/10

Analyte	Result	MRL	Units	Spike Level	Source Result	%REC	%REC Limits	RPD	RPD Limit	Notes
Chloromethane	1.17	0.050	mg/kg	1.25	NA	93.7	75-125	NA	NA	
cis-1,2-Dichloroethene	1.23	0.050	mg/kg	1.25	NA	98.4	75-125	NA	NA	
cis-1,3-Dichloropropene	1.30	0.050	mg/kg	1.25	NA	103	75-125	NA	NA	
Dibromomethane	1.21	0.050	mg/kg	1.25	NA	96.5	75-125	NA	NA	
Dichlorodifluoromethane	1.14	0.050	mg/kg	1.25	NA	90.7	70-130	NA	NA	
Dichlorofluoromethane	1.20	0.050	mg/kg	1.25	NA	95.7	75-125	NA	NA	
Ethyl Ether	1.23	0.050	mg/kg	1.25	NA	98.0	75-125	NA	NA	
Ethylbenzene	1.32	0.050	mg/kg	1.25	NA	106	75-125	NA	NA	
Hexachlorobutadiene	1.23	0.10	mg/kg	1.25	NA	98.2	75-125	NA	NA	
Isopropylbenzene	1.32	0.12	mg/kg	1.25	NA	106	75-125	NA	NA	
m,p-Xylenes	2.64	0.050	mg/kg	2.50	NA	106	75-125	NA	NA	
Methyl Isobutyl Ketone	1.28	0.25	mg/kg	1.25	NA	102	75-125	NA	NA	
Methylene chloride	1.13	0.25	mg/kg	1.25	NA	90.2	75-125	NA	NA	
Methyl-t-butyl ether	1.28	0.050	mg/kg	1.25	NA	102	75-125	NA	NA	
Naphthalene	1.31	0.12	mg/kg	1.25	NA	105	75-125	NA	NA	
n-Butylbenzene	1.34	0.12	mg/kg	1.25	NA	107	75-125	NA	NA	
n-Propylbenzene	1.30	0.12	mg/kg	1.25	NA	104	75-125	NA	NA	
o-Xylene	1.30	0.050	mg/kg	1.25	NA	104	75-125	NA	NA	
sec-Butylbenzene	1.25	0.12	mg/kg	1.25	NA	99.5	75-125	NA	NA	
Styrene	1.40	0.12	mg/kg	1.25	NA	112	75-125	NA	NA	
tert-Butylbenzene	1.33	0.12	mg/kg	1.25	NA	106	75-125	NA	NA	
Tetrachloroethene	1.39	0.10	mg/kg	1.25	NA	111	75-125	NA	NA	
Tetrahydrofuran	1.13	0.25	mg/kg	1.25	NA	90.2	75-125	NA	NA	
Toluene	1.26	0.050	mg/kg	1.25	NA	101	75-125	NA	NA	
trans-1,2-Dichloroethene	1.20	0.050	mg/kg	1.25	NA	96.2	75-125	NA	NA	
trans-1,3-Dichloropropene	1.29	0.050	mg/kg	1.25	NA	103	75-125	NA	NA	
Trichloroethene	1.25	0.050	mg/kg	1.25	NA	99.8	75-125	NA	NA	
Trichlorofluoromethane	1.23	0.050	mg/kg	1.25	NA	98.3	75-125	NA	NA	
Vinyl chloride	1.20	0.12	mg/kg	1.25	NA	95.8	70-130	NA	NA	
<i>Surrogate: 1,2-Dichloroethane-d4</i>	24.2		ug/L	25.0	NA	97.0	80-120			
<i>Surrogate: 4-Bromofluorobenzene</i>	25.2		ug/L	25.0	NA	101	80-120			
<i>Surrogate: Dibromofluoromethane</i>	24.9		ug/L	25.0	NA	99.6	80-120			
<i>Surrogate: Toluene-d8</i>	25.1		ug/L	25.0	NA	100	80-120			

Braun Intertec-Bloomington  
11001 Hampshire Ave. South  
Bloomington, MN 55438

Client Ref: Holasek Property, Medina MN  
Client Contact: Mr. Jeremy Hansen  
PO Number: BL-10-06413

Report #: 1002579  
Project Mgr: Thomas P. Wagner  
Account ID: BL2004

## Volatile Organic Compounds - Quality Control

### Batch B0E0371 - EPA 5035

#### Laboratory Control Sample Duplicate (B0E0371-BSD1)

Prepared & Analyzed: 05/21/10

Analyte	Result	MRL	Units	Spike Level	Source Result	%REC	%REC Limits	RPD	RPD Limit	Notes
1,1,1,2-Tetrachloroethane	1.26	0.050	mg/kg	1.25	NA	100	75-125	0.0398	20	
1,1,1-Trichloroethane	1.23	0.050	mg/kg	1.25	NA	98.4	75-125	0.405	20	
1,1,2,2-Tetrachloroethane	1.29	0.050	mg/kg	1.25	NA	103	75-125	2.39	20	
1,1,2-Trichloroethane	1.22	0.050	mg/kg	1.25	NA	97.6	75-125	0.615	20	
1,1,2-Trichlorotrifluoroethane	1.22	0.050	mg/kg	1.25	NA	97.5	75-125	0.123	20	
1,1-Dichloroethane	1.22	0.050	mg/kg	1.25	NA	97.8	75-125	0.123	20	
1,1-Dichloroethene	1.22	0.050	mg/kg	1.25	NA	97.1	75-125	1.14	20	
1,1-Dichloropropene	1.28	0.050	mg/kg	1.25	NA	102	75-125	0.391	20	
1,2,3-Trichlorobenzene	1.24	0.10	mg/kg	1.25	NA	99.3	75-125	0.841	20	
1,2,3-Trichloropropane	1.30	0.050	mg/kg	1.25	NA	104	75-125	3.12	20	
1,2,4-Trichlorobenzene	1.30	0.050	mg/kg	1.25	NA	104	75-125	0.115	20	
1,2,4-Trimethylbenzene	1.30	0.12	mg/kg	1.25	NA	104	75-125	1.57	20	
1,2-Dibromo-3-chloropropane	1.22	0.50	mg/kg	1.25	NA	97.3	75-125	0.0821	20	
1,2-Dibromoethane	1.29	0.050	mg/kg	1.25	NA	103	75-125	0.896	20	
1,2-Dichlorobenzene	1.26	0.050	mg/kg	1.25	NA	101	75-125	0.198	20	
1,2-Dichloroethane	1.23	0.050	mg/kg	1.25	NA	98.3	75-125	2.01	20	
1,2-Dichloropropane	1.26	0.050	mg/kg	1.25	NA	101	75-125	1.36	20	
1,3,5-Trimethylbenzene	1.28	0.12	mg/kg	1.25	NA	102	75-125	1.51	20	
1,3-Dichlorobenzene	1.24	0.050	mg/kg	1.25	NA	98.8	75-125	2.16	20	
1,3-Dichloropropane	1.27	0.050	mg/kg	1.25	NA	102	75-125	2.99	20	
1,4-Dichlorobenzene	1.24	0.050	mg/kg	1.25	NA	99.1	75-125	1.16	20	
2,2-Dichloropropane	1.20	0.050	mg/kg	1.25	NA	96.0	75-125	1.49	20	
2-Butanone (MEK)	1.34	0.50	mg/kg	1.25	NA	107	75-140	7.12	20	
2-Chlorotoluene	1.26	0.12	mg/kg	1.25	NA	100	75-125	1.66	20	
4-Chlorotoluene	1.27	0.12	mg/kg	1.25	NA	102	75-125	1.95	20	
4-Isopropyltoluene	1.29	0.050	mg/kg	1.25	NA	103	75-125	1.77	20	
Acetone	1.38	0.75	mg/kg	1.25	NA	110	80-175	11.4	25	
Allyl Chloride	1.24	0.050	mg/kg	1.25	NA	99.2	75-125	1.17	20	
Benzene	1.24	0.050	mg/kg	1.25	NA	99.4	75-125	0.201	20	
Bromobenzene	1.24	0.050	mg/kg	1.25	NA	99.2	75-125	1.44	20	
Bromochloromethane	1.23	0.050	mg/kg	1.25	NA	98.0	75-125	3.95	20	
Bromodichloromethane	1.26	0.050	mg/kg	1.25	NA	100	75-125	0.959	20	
Bromoform	1.33	0.25	mg/kg	1.25	NA	106	75-125	2.05	20	
Bromomethane	1.20	0.050	mg/kg	1.25	NA	95.6	70-130	3.41	20	
Carbon Tetrachloride	1.25	0.050	mg/kg	1.25	NA	99.5	75-125	0.321	20	
Chlorobenzene	1.24	0.050	mg/kg	1.25	NA	99.3	75-125	1.08	20	
Chlorodibromomethane	1.31	0.050	mg/kg	1.25	NA	104	75-125	1.00	20	
Chloroethane	1.19	0.050	mg/kg	1.25	NA	94.8	75-125	0.0842	20	
Chloroform	1.23	0.050	mg/kg	1.25	NA	98.3	75-125	0.244	20	

Braun Intertec-Bloomington  
11001 Hampshire Ave. South  
Bloomington, MN 55438

Client Ref: Holasek Property, Medina MN  
Client Contact: Mr. Jeremy Hansen  
PO Number: BL-10-06413

Report #: 1002579  
Project Mgr: Thomas P. Wagner  
Account ID: BL2004

## Volatile Organic Compounds - Quality Control

### Batch B0E0371 - EPA 5035

#### Laboratory Control Sample Duplicate (B0E0371-BSD1)

Prepared & Analyzed: 05/21/10

Analyte	Result	MRL	Units	Spike Level	Source Result	%REC	%REC Limits	RPD	RPD Limit	Notes
Chloromethane	1.12	0.050	mg/kg	1.25	NA	89.5	75-125	4.53	20	
cis-1,2-Dichloroethene	1.22	0.050	mg/kg	1.25	NA	97.4	75-125	0.979	20	
cis-1,3-Dichloropropene	1.29	0.050	mg/kg	1.25	NA	103	75-125	0.116	20	
Dibromomethane	1.21	0.050	mg/kg	1.25	NA	96.7	75-125	0.207	20	
Dichlorodifluoromethane	1.11	0.050	mg/kg	1.25	NA	88.7	70-130	2.18	20	
Dichlorofluoromethane	1.19	0.050	mg/kg	1.25	NA	95.2	75-125	0.586	20	
Ethyl Ether	1.24	0.050	mg/kg	1.25	NA	99.0	75-125	1.01	20	
Ethylbenzene	1.31	0.050	mg/kg	1.25	NA	105	75-125	0.835	20	
Hexachlorobutadiene	1.24	0.10	mg/kg	1.25	NA	98.7	75-125	0.527	20	
Isopropylbenzene	1.32	0.12	mg/kg	1.25	NA	105	75-125	0.531	20	
m,p-Xylenes	2.63	0.050	mg/kg	2.50	NA	105	75-125	0.323	20	
Methyl Isobutyl Ketone	1.28	0.25	mg/kg	1.25	NA	103	75-125	0.312	20	
Methylene chloride	1.17	0.25	mg/kg	1.25	NA	93.4	75-125	3.48	20	
Methyl-t-butyl ether	1.31	0.050	mg/kg	1.25	NA	104	75-125	1.78	20	
Naphthalene	1.31	0.12	mg/kg	1.25	NA	105	75-125	0.152	20	
n-Butylbenzene	1.31	0.12	mg/kg	1.25	NA	104	75-125	2.94	20	
n-Propylbenzene	1.29	0.12	mg/kg	1.25	NA	103	75-125	1.39	20	
o-Xylene	1.30	0.050	mg/kg	1.25	NA	103	75-125	0.0772	20	
sec-Butylbenzene	1.22	0.12	mg/kg	1.25	NA	97.2	75-125	2.39	20	
Styrene	1.40	0.12	mg/kg	1.25	NA	112	75-125	0.214	20	
tert-Butylbenzene	1.30	0.12	mg/kg	1.25	NA	104	75-125	2.36	20	
Tetrachloroethene	1.37	0.10	mg/kg	1.25	NA	109	75-125	1.42	20	
Tetrahydrofuran	1.18	0.25	mg/kg	1.25	NA	94.1	75-125	4.20	20	
Toluene	1.26	0.050	mg/kg	1.25	NA	100	75-125	0.159	20	
trans-1,2-Dichloroethene	1.22	0.050	mg/kg	1.25	NA	97.7	75-125	1.57	20	
trans-1,3-Dichloropropene	1.32	0.050	mg/kg	1.25	NA	106	75-125	2.41	20	
Trichloroethene	1.25	0.050	mg/kg	1.25	NA	99.6	75-125	0.280	20	
Trichlorofluoromethane	1.22	0.050	mg/kg	1.25	NA	97.6	75-125	0.652	20	
Vinyl chloride	1.12	0.12	mg/kg	1.25	NA	89.6	70-130	6.63	20	
<i>Surrogate: 1,2-Dichloroethane-d4</i>	25.2		ug/L	25.0	NA	101	80-120			
<i>Surrogate: 4-Bromofluorobenzene</i>	25.4		ug/L	25.0	NA	102	80-120			
<i>Surrogate: Dibromofluoromethane</i>	24.9		ug/L	25.0	NA	99.7	80-120			
<i>Surrogate: Toluene-d8</i>	25.3		ug/L	25.0	NA	101	80-120			

Braun Intertec-Bloomington  
11001 Hampshire Ave. South  
Bloomington, MN 55438

Client Ref: Holasek Property, Medina MN  
Client Contact: Mr. Jeremy Hansen  
PO Number: BL-10-06413

Report #: 1002579  
Project Mgr: Thomas P. Wagner  
Account ID: BL2004

## Volatile Organic Compounds - Quality Control

### Batch B0E0371 - EPA 5035

#### Matrix Spike (B0E0371-MS1)

Source: 1002579-02

Prepared & Analyzed: 05/21/10

Analyte	Result	MRL	Units	Spike Level	Source Result	%REC	%REC Limits	RPD	RPD Limit	Notes
1,1,1,2-Tetrachloroethane	1.54	0.062	mg/kg dry	1.55	ND	99.1	75-125	NA	NA	
1,1,1-Trichloroethane	1.57	0.062	mg/kg dry	1.55	ND	101	75-125	NA	NA	
1,1,2,2-Tetrachloroethane	1.57	0.062	mg/kg dry	1.55	ND	101	75-125	NA	NA	
1,1,2-Trichloroethane	1.52	0.062	mg/kg dry	1.55	ND	98.0	75-125	NA	NA	
1,1,2-Trichlorotrifluoroethane	1.56	0.062	mg/kg dry	1.55	ND	101	75-125	NA	NA	
1,1-Dichloroethane	1.52	0.062	mg/kg dry	1.55	ND	98.1	75-125	NA	NA	
1,1-Dichloroethene	1.52	0.062	mg/kg dry	1.55	ND	97.8	75-125	NA	NA	
1,1-Dichloropropene	1.57	0.062	mg/kg dry	1.55	ND	101	75-125	NA	NA	
1,2,3-Trichlorobenzene	1.61	0.12	mg/kg dry	1.55	ND	104	75-125	NA	NA	
1,2,3-Trichloropropane	1.60	0.062	mg/kg dry	1.55	ND	103	75-125	NA	NA	
1,2,4-Trichlorobenzene	1.58	0.062	mg/kg dry	1.55	ND	102	75-125	NA	NA	
1,2,4-Trimethylbenzene	1.65	0.16	mg/kg dry	1.55	ND	106	75-125	NA	NA	
1,2-Dibromo-3-chloropropane	1.48	0.62	mg/kg dry	1.55	ND	95.4	75-125	NA	NA	
1,2-Dibromoethane	1.57	0.062	mg/kg dry	1.55	ND	101	75-125	NA	NA	
1,2-Dichlorobenzene	1.59	0.062	mg/kg dry	1.55	ND	103	75-125	NA	NA	
1,2-Dichloroethane	1.53	0.062	mg/kg dry	1.55	ND	98.7	75-125	NA	NA	
1,2-Dichloropropane	1.56	0.062	mg/kg dry	1.55	ND	101	75-125	NA	NA	
1,3,5-Trimethylbenzene	1.64	0.16	mg/kg dry	1.55	ND	106	75-125	NA	NA	
1,3-Dichlorobenzene	1.58	0.062	mg/kg dry	1.55	ND	102	75-125	NA	NA	
1,3-Dichloropropane	1.55	0.062	mg/kg dry	1.55	ND	100	75-125	NA	NA	
1,4-Dichlorobenzene	1.57	0.062	mg/kg dry	1.55	ND	101	75-125	NA	NA	
2,2-Dichloropropane	1.55	0.062	mg/kg dry	1.55	ND	100	75-125	NA	NA	
2-Butanone (MEK)	1.49	0.62	mg/kg dry	1.55	ND	95.9	75-170	NA	NA	
2-Chlorotoluene	1.58	0.16	mg/kg dry	1.55	ND	102	75-125	NA	NA	
4-Chlorotoluene	1.61	0.16	mg/kg dry	1.55	ND	104	75-125	NA	NA	
4-Isopropyltoluene	1.64	0.062	mg/kg dry	1.55	ND	106	75-125	NA	NA	
Acetone	1.51	0.93	mg/kg dry	1.55	ND	97.4	75-180	NA	NA	
Allyl Chloride	1.55	0.062	mg/kg dry	1.55	ND	99.8	75-125	NA	NA	
Benzene	1.56	0.062	mg/kg dry	1.55	ND	100	75-125	NA	NA	
Bromobenzene	1.59	0.062	mg/kg dry	1.55	ND	102	75-125	NA	NA	
Bromochloromethane	1.48	0.062	mg/kg dry	1.55	ND	95.0	75-125	NA	NA	
Bromodichloromethane	1.60	0.062	mg/kg dry	1.55	ND	103	75-125	NA	NA	
Bromoform	1.60	0.31	mg/kg dry	1.55	ND	103	75-125	NA	NA	
Bromomethane	1.46	0.062	mg/kg dry	1.55	ND	93.9	70-130	NA	NA	
Carbon Tetrachloride	1.59	0.062	mg/kg dry	1.55	ND	102	75-125	NA	NA	
Chlorobenzene	1.54	0.062	mg/kg dry	1.55	ND	99.1	75-125	NA	NA	
Chlorodibromomethane	1.58	0.062	mg/kg dry	1.55	ND	102	75-125	NA	NA	
Chloroethane	1.46	0.062	mg/kg dry	1.55	ND	93.7	75-125	NA	NA	
Chloroform	1.52	0.062	mg/kg dry	1.55	ND	98.0	75-125	NA	NA	

Braun Intertec-Bloomington  
11001 Hampshire Ave. South  
Bloomington, MN 55438

Client Ref: Holasek Property, Medina MN  
Client Contact: Mr. Jeremy Hansen  
PO Number: BL-10-06413

Report #: 1002579  
Project Mgr: Thomas P. Wagner  
Account ID: BL2004

## Volatile Organic Compounds - Quality Control

### Batch B0E0371 - EPA 5035

#### Matrix Spike (B0E0371-MS1)

Source: 1002579-02

Prepared & Analyzed: 05/21/10

Analyte	Result	MRL	Units	Spike Level	Source Result	%REC	%REC Limits	RPD	RPD Limit	Notes
Chloromethane	1.43	0.062	mg/kg dry	1.55	ND	91.8	75-125	NA	NA	
cis-1,2-Dichloroethene	1.53	0.062	mg/kg dry	1.55	ND	98.2	75-125	NA	NA	
cis-1,3-Dichloropropene	1.65	0.062	mg/kg dry	1.55	ND	106	75-125	NA	NA	
Dibromomethane	1.54	0.062	mg/kg dry	1.55	ND	99.2	75-125	NA	NA	
Dichlorodifluoromethane	1.30	0.062	mg/kg dry	1.55	ND	83.6	70-130	NA	NA	
Dichlorofluoromethane	1.46	0.062	mg/kg dry	1.55	ND	93.9	75-125	NA	NA	
Ethyl Ether	1.54	0.062	mg/kg dry	1.55	ND	98.9	75-125	NA	NA	
Ethylbenzene	1.62	0.062	mg/kg dry	1.55	ND	104	75-125	NA	NA	
Hexachlorobutadiene	1.55	0.12	mg/kg dry	1.55	ND	99.9	75-125	NA	NA	
Isopropylbenzene	1.62	0.16	mg/kg dry	1.55	ND	104	75-125	NA	NA	
m,p-Xylenes	3.21	0.062	mg/kg dry	3.10	ND	104	75-125	NA	NA	
Methyl Isobutyl Ketone	1.55	0.31	mg/kg dry	1.55	ND	99.7	75-125	NA	NA	
Methylene chloride	1.42	0.31	mg/kg dry	1.55	ND	91.7	75-125	NA	NA	
Methyl-t-butyl ether	1.59	0.062	mg/kg dry	1.55	ND	102	75-125	NA	NA	
Naphthalene	1.60	0.16	mg/kg dry	1.55	ND	103	75-125	NA	NA	
n-Butylbenzene	1.66	0.16	mg/kg dry	1.55	ND	107	75-125	NA	NA	
n-Propylbenzene	1.64	0.16	mg/kg dry	1.55	ND	106	75-125	NA	NA	
o-Xylene	1.59	0.062	mg/kg dry	1.55	ND	103	75-125	NA	NA	
sec-Butylbenzene	1.56	0.16	mg/kg dry	1.55	ND	100	75-125	NA	NA	
Styrene	1.70	0.16	mg/kg dry	1.55	ND	110	75-125	NA	NA	
tert-Butylbenzene	1.66	0.16	mg/kg dry	1.55	ND	107	75-125	NA	NA	
Tetrachloroethene	1.51	0.12	mg/kg dry	1.55	ND	97.4	75-125	NA	NA	
Tetrahydrofuran	1.53	0.31	mg/kg dry	1.55	ND	98.4	75-125	NA	NA	
Toluene	1.54	0.062	mg/kg dry	1.55	ND	99.3	75-125	NA	NA	
trans-1,2-Dichloroethene	1.50	0.062	mg/kg dry	1.55	ND	96.6	75-125	NA	NA	
trans-1,3-Dichloropropene	1.65	0.062	mg/kg dry	1.55	ND	107	75-125	NA	NA	
Trichloroethene	1.54	0.062	mg/kg dry	1.55	ND	99.4	75-125	NA	NA	
Trichlorofluoromethane	1.58	0.062	mg/kg dry	1.55	ND	101	75-125	NA	NA	
Vinyl chloride	1.41	0.16	mg/kg dry	1.55	ND	90.6	70-130	NA	NA	
<i>Surrogate: 1,2-Dichloroethane-d4</i>	24.3		ug/L	25.0	NA	97.2	80-120			
<i>Surrogate: 4-Bromofluorobenzene</i>	24.6		ug/L	25.0	NA	98.2	80-120			
<i>Surrogate: Dibromofluoromethane</i>	24.8		ug/L	25.0	NA	99.1	80-120			
<i>Surrogate: Toluene-d8</i>	24.8		ug/L	25.0	NA	99.1	80-120			

Braun Intertec-Bloomington  
11001 Hampshire Ave. South  
Bloomington, MN 55438

Client Ref: Holasek Property, Medina MN  
Client Contact: Mr. Jeremy Hansen  
PO Number: BL-10-06413

Report #: 1002579  
Project Mgr: Thomas P. Wagner  
Account ID: BL2004

## Volatile Organic Compounds - Quality Control

### Batch B0E0371 - EPA 5035

#### Matrix Spike Duplicate (B0E0371-MSD1)

Source: 1002579-02

Prepared & Analyzed: 05/21/10

Analyte	Result	MRL	Units	Spike Level	Source Result	%REC	%REC Limits	RPD	RPD Limit	Notes
1,1,1,2-Tetrachloroethane	1.59	0.062	mg/kg dry	1.55	ND	102	75-125	2.98	20	
1,1,1-Trichloroethane	1.57	0.062	mg/kg dry	1.55	ND	101	75-125	0.0396	20	
1,1,2,2-Tetrachloroethane	1.60	0.062	mg/kg dry	1.55	ND	103	75-125	1.76	20	
1,1,2-Trichloroethane	1.53	0.062	mg/kg dry	1.55	ND	98.8	75-125	0.771	20	
1,1,2-Trichlorotrifluoroethane	1.52	0.062	mg/kg dry	1.55	ND	97.6	75-125	3.10	20	
1,1-Dichloroethane	1.52	0.062	mg/kg dry	1.55	ND	97.8	75-125	0.326	20	
1,1-Dichloroethene	1.51	0.062	mg/kg dry	1.55	ND	97.0	75-125	0.902	20	
1,1-Dichloropropene	1.58	0.062	mg/kg dry	1.55	ND	102	75-125	0.433	20	
1,2,3-Trichlorobenzene	1.56	0.12	mg/kg dry	1.55	ND	101	75-125	3.01	20	
1,2,3-Trichloropropane	1.59	0.062	mg/kg dry	1.55	ND	103	75-125	0.0777	20	
1,2,4-Trichlorobenzene	1.62	0.062	mg/kg dry	1.55	ND	104	75-125	2.09	20	
1,2,4-Trimethylbenzene	1.65	0.16	mg/kg dry	1.55	ND	106	75-125	0.225	20	
1,2-Dibromo-3-chloropropane	1.57	0.62	mg/kg dry	1.55	ND	101	75-125	5.96	20	
1,2-Dibromoethane	1.60	0.062	mg/kg dry	1.55	ND	103	75-125	2.15	20	
1,2-Dichlorobenzene	1.58	0.062	mg/kg dry	1.55	ND	102	75-125	0.860	20	
1,2-Dichloroethane	1.53	0.062	mg/kg dry	1.55	ND	98.4	75-125	0.365	20	
1,2-Dichloropropane	1.56	0.062	mg/kg dry	1.55	ND	100	75-125	0.238	20	
1,3,5-Trimethylbenzene	1.65	0.16	mg/kg dry	1.55	ND	106	75-125	0.302	20	
1,3-Dichlorobenzene	1.58	0.062	mg/kg dry	1.55	ND	102	75-125	0.0392	20	
1,3-Dichloropropane	1.60	0.062	mg/kg dry	1.55	ND	103	75-125	2.80	20	
1,4-Dichlorobenzene	1.56	0.062	mg/kg dry	1.55	ND	101	75-125	0.278	20	
2,2-Dichloropropane	1.55	0.062	mg/kg dry	1.55	ND	99.6	75-125	0.440	20	
2-Butanone (MEK)	1.39	0.62	mg/kg dry	1.55	ND	89.5	75-170	6.89	20	
2-Chlorotoluene	1.59	0.16	mg/kg dry	1.55	ND	102	75-125	0.509	20	
4-Chlorotoluene	1.60	0.16	mg/kg dry	1.55	ND	103	75-125	0.502	20	
4-Isopropyltoluene	1.66	0.062	mg/kg dry	1.55	ND	107	75-125	1.39	20	
Acetone	1.55	0.93	mg/kg dry	1.55	ND	100	75-180	2.67	25	
Allyl Chloride	1.55	0.062	mg/kg dry	1.55	ND	99.9	75-125	0.0799	20	
Benzene	1.57	0.062	mg/kg dry	1.55	ND	101	75-125	0.834	20	
Bromobenzene	1.61	0.062	mg/kg dry	1.55	ND	103	75-125	1.13	20	
Bromochloromethane	1.50	0.062	mg/kg dry	1.55	ND	96.6	75-125	1.75	20	
Bromodichloromethane	1.61	0.062	mg/kg dry	1.55	ND	103	75-125	0.581	20	
Bromoform	1.71	0.31	mg/kg dry	1.55	ND	110	75-125	6.62	20	
Bromomethane	1.45	0.062	mg/kg dry	1.55	ND	93.3	70-130	0.682	20	
Carbon Tetrachloride	1.59	0.062	mg/kg dry	1.55	ND	102	75-125	0.351	20	
Chlorobenzene	1.58	0.062	mg/kg dry	1.55	ND	102	75-125	2.51	20	
Chlorodibromomethane	1.65	0.062	mg/kg dry	1.55	ND	106	75-125	4.49	20	
Chloroethane	1.45	0.062	mg/kg dry	1.55	ND	93.4	75-125	0.384	20	
Chloroform	1.54	0.062	mg/kg dry	1.55	ND	98.9	75-125	0.892	20	

Braun Intertec-Bloomington  
11001 Hampshire Ave. South  
Bloomington, MN 55438

Client Ref: Holasek Property, Medina MN  
Client Contact: Mr. Jeremy Hansen  
PO Number: BL-10-06413

Report #: 1002579  
Project Mgr: Thomas P. Wagner  
Account ID: BL2004

## Volatile Organic Compounds - Quality Control

### Batch B0E0371 - EPA 5035

#### Matrix Spike Duplicate (B0E0371-MSD1)

Source: 1002579-02

Prepared & Analyzed: 05/21/10

Analyte	Result	MRL	Units	Spike Level	Source Result	%REC	%REC Limits	RPD	RPD Limit	Notes
Chloromethane	1.41	0.062	mg/kg dry	1.55	ND	91.1	75-125	0.830	20	
cis-1,2-Dichloroethene	1.53	0.062	mg/kg dry	1.55	ND	98.2	75-125	0.00	20	
cis-1,3-Dichloropropene	1.65	0.062	mg/kg dry	1.55	ND	107	75-125	0.188	20	
Dibromomethane	1.55	0.062	mg/kg dry	1.55	ND	100	75-125	0.922	20	
Dichlorodifluoromethane	1.30	0.062	mg/kg dry	1.55	ND	83.6	70-130	0.00	20	
Dichlorofluoromethane	1.46	0.062	mg/kg dry	1.55	ND	93.7	75-125	0.170	20	
Ethyl Ether	1.48	0.062	mg/kg dry	1.55	ND	95.6	75-125	3.45	20	
Ethylbenzene	1.66	0.062	mg/kg dry	1.55	ND	107	75-125	2.91	20	
Hexachlorobutadiene	1.57	0.12	mg/kg dry	1.55	ND	101	75-125	0.915	20	
Isopropylbenzene	1.67	0.16	mg/kg dry	1.55	ND	107	75-125	3.10	20	
m,p-Xylenes	3.29	0.062	mg/kg dry	3.10	ND	106	75-125	2.48	20	
Methyl Isobutyl Ketone	1.63	0.31	mg/kg dry	1.55	ND	105	75-125	5.23	20	
Methylene chloride	1.40	0.31	mg/kg dry	1.55	ND	90.1	75-125	1.71	20	
Methyl-t-butyl ether	1.58	0.062	mg/kg dry	1.55	ND	102	75-125	0.196	20	
Naphthalene	1.62	0.16	mg/kg dry	1.55	ND	105	75-125	1.54	20	
n-Butylbenzene	1.70	0.16	mg/kg dry	1.55	ND	109	75-125	2.21	20	
n-Propylbenzene	1.65	0.16	mg/kg dry	1.55	ND	106	75-125	0.302	20	
o-Xylene	1.63	0.062	mg/kg dry	1.55	ND	105	75-125	2.38	20	
sec-Butylbenzene	1.58	0.16	mg/kg dry	1.55	ND	102	75-125	1.19	20	
Styrene	1.75	0.16	mg/kg dry	1.55	ND	113	75-125	2.55	20	
tert-Butylbenzene	1.66	0.16	mg/kg dry	1.55	ND	107	75-125	0.411	20	
Tetrachloroethene	1.54	0.12	mg/kg dry	1.55	ND	99.3	75-125	1.99	20	
Tetrahydrofuran	1.38	0.31	mg/kg dry	1.55	ND	88.8	75-125	10.2	20	
Toluene	1.58	0.062	mg/kg dry	1.55	ND	101	75-125	2.11	20	
trans-1,2-Dichloroethene	1.51	0.062	mg/kg dry	1.55	ND	97.3	75-125	0.741	20	
trans-1,3-Dichloropropene	1.68	0.062	mg/kg dry	1.55	ND	108	75-125	1.45	20	
Trichloroethene	1.56	0.062	mg/kg dry	1.55	ND	101	75-125	1.28	20	
Trichlorofluoromethane	1.54	0.062	mg/kg dry	1.55	ND	99.3	75-125	2.11	20	
Vinyl chloride	1.43	0.16	mg/kg dry	1.55	ND	92.1	70-130	1.66	20	
<i>Surrogate: 1,2-Dichloroethane-d4</i>	24.8		ug/L	25.0	NA	99.2	80-120			
<i>Surrogate: 4-Bromofluorobenzene</i>	25.5		ug/L	25.0	NA	102	80-120			
<i>Surrogate: Dibromofluoromethane</i>	24.4		ug/L	25.0	NA	97.7	80-120			
<i>Surrogate: Toluene-d8</i>	25.1		ug/L	25.0	NA	100	80-120			

Braun Intertec-Bloomington  
11001 Hampshire Ave. South  
Bloomington, MN 55438

Client Ref: Holasek Property, Medina MN  
Client Contact: Mr. Jeremy Hansen  
PO Number: BL-10-06413

Report #: 1002579  
Project Mgr: Thomas P. Wagner  
Account ID: BL2004

## Volatile Organic Compounds - Quality Control

### Batch B0E0399 - EPA 5035

#### Method Blank (B0E0399-BLK1)

Prepared & Analyzed: 05/24/10

Analyte	Result	MRL	Units	Spike Level	Source Result	%REC	%REC Limits	RPD	RPD Limit	Notes
1,1,1,2-Tetrachloroethane	< 0.050	0.050	mg/kg	NA	NA	NA	NA	NA	NA	
1,1,1-Trichloroethane	< 0.050	0.050	mg/kg	NA	NA	NA	NA	NA	NA	
1,1,2,2-Tetrachloroethane	< 0.050	0.050	mg/kg	NA	NA	NA	NA	NA	NA	
1,1,2-Trichloroethane	< 0.050	0.050	mg/kg	NA	NA	NA	NA	NA	NA	
1,1,2-Trichlorotrifluoroethane	< 0.050	0.050	mg/kg	NA	NA	NA	NA	NA	NA	
1,1-Dichloroethane	< 0.050	0.050	mg/kg	NA	NA	NA	NA	NA	NA	
1,1-Dichloroethene	< 0.050	0.050	mg/kg	NA	NA	NA	NA	NA	NA	
1,1-Dichloropropene	< 0.050	0.050	mg/kg	NA	NA	NA	NA	NA	NA	
1,2,3-Trichlorobenzene	< 0.10	0.10	mg/kg	NA	NA	NA	NA	NA	NA	
1,2,3-Trichloropropane	< 0.050	0.050	mg/kg	NA	NA	NA	NA	NA	NA	
1,2,4-Trichlorobenzene	< 0.050	0.050	mg/kg	NA	NA	NA	NA	NA	NA	
1,2,4-Trimethylbenzene	< 0.12	0.12	mg/kg	NA	NA	NA	NA	NA	NA	
1,2-Dibromo-3-chloropropane	< 0.50	0.50	mg/kg	NA	NA	NA	NA	NA	NA	
1,2-Dibromoethane	< 0.050	0.050	mg/kg	NA	NA	NA	NA	NA	NA	
1,2-Dichlorobenzene	< 0.050	0.050	mg/kg	NA	NA	NA	NA	NA	NA	
1,2-Dichloroethane	< 0.050	0.050	mg/kg	NA	NA	NA	NA	NA	NA	
1,2-Dichloropropane	< 0.050	0.050	mg/kg	NA	NA	NA	NA	NA	NA	
1,3,5-Trimethylbenzene	< 0.12	0.12	mg/kg	NA	NA	NA	NA	NA	NA	
1,3-Dichlorobenzene	< 0.050	0.050	mg/kg	NA	NA	NA	NA	NA	NA	
1,3-Dichloropropane	< 0.050	0.050	mg/kg	NA	NA	NA	NA	NA	NA	
1,4-Dichlorobenzene	< 0.050	0.050	mg/kg	NA	NA	NA	NA	NA	NA	
2,2-Dichloropropane	< 0.050	0.050	mg/kg	NA	NA	NA	NA	NA	NA	
2-Butanone (MEK)	< 0.50	0.50	mg/kg	NA	NA	NA	NA	NA	NA	
2-Chlorotoluene	< 0.12	0.12	mg/kg	NA	NA	NA	NA	NA	NA	
4-Chlorotoluene	< 0.12	0.12	mg/kg	NA	NA	NA	NA	NA	NA	
4-Isopropyltoluene	< 0.050	0.050	mg/kg	NA	NA	NA	NA	NA	NA	
Acetone	< 0.75	0.75	mg/kg	NA	NA	NA	NA	NA	NA	
Allyl Chloride	< 0.050	0.050	mg/kg	NA	NA	NA	NA	NA	NA	
Benzene	< 0.050	0.050	mg/kg	NA	NA	NA	NA	NA	NA	
Bromobenzene	< 0.050	0.050	mg/kg	NA	NA	NA	NA	NA	NA	
Bromochloromethane	< 0.050	0.050	mg/kg	NA	NA	NA	NA	NA	NA	
Bromodichloromethane	< 0.050	0.050	mg/kg	NA	NA	NA	NA	NA	NA	
Bromoform	< 0.25	0.25	mg/kg	NA	NA	NA	NA	NA	NA	
Bromomethane	< 0.050	0.050	mg/kg	NA	NA	NA	NA	NA	NA	
Carbon Tetrachloride	< 0.050	0.050	mg/kg	NA	NA	NA	NA	NA	NA	
Chlorobenzene	< 0.050	0.050	mg/kg	NA	NA	NA	NA	NA	NA	
Chlorodibromomethane	< 0.050	0.050	mg/kg	NA	NA	NA	NA	NA	NA	
Chloroethane	< 0.050	0.050	mg/kg	NA	NA	NA	NA	NA	NA	
Chloroform	< 0.050	0.050	mg/kg	NA	NA	NA	NA	NA	NA	

Braun Intertec-Bloomington  
11001 Hampshire Ave. South  
Bloomington, MN 55438

Client Ref: Holasek Property, Medina MN  
Client Contact: Mr. Jeremy Hansen  
PO Number: BL-10-06413

Report #: 1002579  
Project Mgr: Thomas P. Wagner  
Account ID: BL2004

## Volatile Organic Compounds - Quality Control

### Batch B0E0399 - EPA 5035

#### Method Blank (B0E0399-BLK1)

Prepared & Analyzed: 05/24/10

Analyte	Result	MRL	Units	Spike Level	Source Result	%REC	%REC Limits	RPD	RPD Limit	Notes
Chloromethane	< 0.050	0.050	mg/kg	NA	NA	NA	NA	NA	NA	
cis-1,2-Dichloroethene	< 0.050	0.050	mg/kg	NA	NA	NA	NA	NA	NA	
cis-1,3-Dichloropropene	< 0.050	0.050	mg/kg	NA	NA	NA	NA	NA	NA	
Dibromomethane	< 0.050	0.050	mg/kg	NA	NA	NA	NA	NA	NA	
Dichlorodifluoromethane	< 0.050	0.050	mg/kg	NA	NA	NA	NA	NA	NA	
Dichlorofluoromethane	< 0.050	0.050	mg/kg	NA	NA	NA	NA	NA	NA	
Ethyl Ether	< 0.050	0.050	mg/kg	NA	NA	NA	NA	NA	NA	
Ethylbenzene	< 0.050	0.050	mg/kg	NA	NA	NA	NA	NA	NA	
Hexachlorobutadiene	< 0.10	0.10	mg/kg	NA	NA	NA	NA	NA	NA	
Isopropylbenzene	< 0.12	0.12	mg/kg	NA	NA	NA	NA	NA	NA	
m,p-Xylenes	< 0.050	0.050	mg/kg	NA	NA	NA	NA	NA	NA	
Methyl Isobutyl Ketone	< 0.25	0.25	mg/kg	NA	NA	NA	NA	NA	NA	
Methylene chloride	< 0.25	0.25	mg/kg	NA	NA	NA	NA	NA	NA	
Methyl-t-butyl ether	< 0.050	0.050	mg/kg	NA	NA	NA	NA	NA	NA	
Naphthalene	< 0.12	0.12	mg/kg	NA	NA	NA	NA	NA	NA	
n-Butylbenzene	< 0.12	0.12	mg/kg	NA	NA	NA	NA	NA	NA	
n-Propylbenzene	< 0.12	0.12	mg/kg	NA	NA	NA	NA	NA	NA	
o-Xylene	< 0.050	0.050	mg/kg	NA	NA	NA	NA	NA	NA	
sec-Butylbenzene	< 0.12	0.12	mg/kg	NA	NA	NA	NA	NA	NA	
Styrene	< 0.12	0.12	mg/kg	NA	NA	NA	NA	NA	NA	
tert-Butylbenzene	< 0.12	0.12	mg/kg	NA	NA	NA	NA	NA	NA	
Tetrachloroethene	< 0.10	0.10	mg/kg	NA	NA	NA	NA	NA	NA	
Tetrahydrofuran	< 0.25	0.25	mg/kg	NA	NA	NA	NA	NA	NA	
Toluene	< 0.050	0.050	mg/kg	NA	NA	NA	NA	NA	NA	
trans-1,2-Dichloroethene	< 0.050	0.050	mg/kg	NA	NA	NA	NA	NA	NA	
trans-1,3-Dichloropropene	< 0.050	0.050	mg/kg	NA	NA	NA	NA	NA	NA	
Trichloroethene	< 0.050	0.050	mg/kg	NA	NA	NA	NA	NA	NA	
Trichlorofluoromethane	< 0.050	0.050	mg/kg	NA	NA	NA	NA	NA	NA	
Vinyl chloride	< 0.12	0.12	mg/kg	NA	NA	NA	NA	NA	NA	
<i>Surrogate: 1,2-Dichloroethane-d4</i>	25.9		ug/L	25.0	NA	103	80-120			
<i>Surrogate: 4-Bromofluorobenzene</i>	22.2		ug/L	25.0	NA	88.7	80-120			
<i>Surrogate: Dibromofluoromethane</i>	24.9		ug/L	25.0	NA	99.4	80-120			
<i>Surrogate: Toluene-d8</i>	24.4		ug/L	25.0	NA	97.6	80-120			

Braun Intertec-Bloomington  
11001 Hampshire Ave. South  
Bloomington, MN 55438

Client Ref: Holasek Property, Medina MN  
Client Contact: Mr. Jeremy Hansen  
PO Number: BL-10-06413

Report #: 1002579  
Project Mgr: Thomas P. Wagner  
Account ID: BL2004

## Volatile Organic Compounds - Quality Control

### Batch B0E0399 - EPA 5035

#### Laboratory Control Sample (B0E0399-BS1)

Prepared & Analyzed: 05/24/10

Analyte	Result	MRL	Units	Spike Level	Source Result	%REC	%REC Limits	RPD	RPD Limit	Notes
1,1,1,2-Tetrachloroethane	1.19	0.050	mg/kg	1.25	NA	95.3	75-125	NA	NA	
1,1,1-Trichloroethane	1.22	0.050	mg/kg	1.25	NA	97.7	75-125	NA	NA	
1,1,2,2-Tetrachloroethane	1.32	0.050	mg/kg	1.25	NA	106	75-125	NA	NA	
1,1,2-Trichloroethane	1.20	0.050	mg/kg	1.25	NA	96.2	75-125	NA	NA	
1,1,2-Trichlorotrifluoroethane	1.19	0.050	mg/kg	1.25	NA	95.3	75-125	NA	NA	
1,1-Dichloroethane	1.26	0.050	mg/kg	1.25	NA	100	75-125	NA	NA	
1,1-Dichloroethene	1.21	0.050	mg/kg	1.25	NA	96.2	75-125	NA	NA	
1,1-Dichloropropene	1.28	0.050	mg/kg	1.25	NA	102	75-125	NA	NA	
1,2,3-Trichlorobenzene	1.29	0.10	mg/kg	1.25	NA	103	75-125	NA	NA	
1,2,3-Trichloropropane	1.24	0.050	mg/kg	1.25	NA	99.2	75-125	NA	NA	
1,2,4-Trichlorobenzene	1.30	0.050	mg/kg	1.25	NA	104	75-125	NA	NA	
1,2,4-Trimethylbenzene	1.34	0.12	mg/kg	1.25	NA	107	75-125	NA	NA	
1,2-Dibromo-3-chloropropane	1.34	0.50	mg/kg	1.25	NA	107	75-125	NA	NA	
1,2-Dibromoethane	1.24	0.050	mg/kg	1.25	NA	99.4	75-125	NA	NA	
1,2-Dichlorobenzene	1.27	0.050	mg/kg	1.25	NA	102	75-125	NA	NA	
1,2-Dichloroethane	1.25	0.050	mg/kg	1.25	NA	100	75-125	NA	NA	
1,2-Dichloropropane	1.33	0.050	mg/kg	1.25	NA	106	75-125	NA	NA	
1,3,5-Trimethylbenzene	1.33	0.12	mg/kg	1.25	NA	106	75-125	NA	NA	
1,3-Dichlorobenzene	1.27	0.050	mg/kg	1.25	NA	102	75-125	NA	NA	
1,3-Dichloropropane	1.27	0.050	mg/kg	1.25	NA	101	75-125	NA	NA	
1,4-Dichlorobenzene	1.26	0.050	mg/kg	1.25	NA	100	75-125	NA	NA	
2,2-Dichloropropane	1.26	0.050	mg/kg	1.25	NA	101	75-125	NA	NA	
2-Butanone (MEK)	1.14	0.50	mg/kg	1.25	NA	90.8	75-140	NA	NA	
2-Chlorotoluene	1.29	0.12	mg/kg	1.25	NA	103	75-125	NA	NA	
4-Chlorotoluene	1.29	0.12	mg/kg	1.25	NA	103	75-125	NA	NA	
4-Isopropyltoluene	1.33	0.050	mg/kg	1.25	NA	106	75-125	NA	NA	
Acetone	1.32	0.75	mg/kg	1.25	NA	105	80-175	NA	NA	
Allyl Chloride	1.25	0.050	mg/kg	1.25	NA	99.9	75-125	NA	NA	
Benzene	1.29	0.050	mg/kg	1.25	NA	103	75-125	NA	NA	
Bromobenzene	1.28	0.050	mg/kg	1.25	NA	102	75-125	NA	NA	
Bromochloromethane	1.20	0.050	mg/kg	1.25	NA	95.6	75-125	NA	NA	
Bromodichloromethane	1.31	0.050	mg/kg	1.25	NA	104	75-125	NA	NA	
Bromoform	1.26	0.25	mg/kg	1.25	NA	100	75-125	NA	NA	
Bromomethane	1.11	0.050	mg/kg	1.25	NA	88.5	70-130	NA	NA	
Carbon Tetrachloride	1.26	0.050	mg/kg	1.25	NA	101	75-125	NA	NA	
Chlorobenzene	1.21	0.050	mg/kg	1.25	NA	96.6	75-125	NA	NA	
Chlorodibromomethane	1.25	0.050	mg/kg	1.25	NA	99.5	75-125	NA	NA	
Chloroethane	1.21	0.050	mg/kg	1.25	NA	96.6	75-125	NA	NA	
Chloroform	1.22	0.050	mg/kg	1.25	NA	97.7	75-125	NA	NA	

Braun Intertec-Bloomington  
11001 Hampshire Ave. South  
Bloomington, MN 55438

Client Ref: Holasek Property, Medina MN  
Client Contact: Mr. Jeremy Hansen  
PO Number: BL-10-06413

Report #: 1002579  
Project Mgr: Thomas P. Wagner  
Account ID: BL2004

## Volatile Organic Compounds - Quality Control

### Batch B0E0399 - EPA 5035

#### Laboratory Control Sample (B0E0399-BS1)

Prepared & Analyzed: 05/24/10

Analyte	Result	MRL	Units	Spike Level	Source Result	%REC	%REC Limits	RPD	RPD Limit	Notes
Chloromethane	1.13	0.050	mg/kg	1.25	NA	90.1	75-125	NA	NA	
cis-1,2-Dichloroethene	1.23	0.050	mg/kg	1.25	NA	97.9	75-125	NA	NA	
cis-1,3-Dichloropropene	1.37	0.050	mg/kg	1.25	NA	109	75-125	NA	NA	
Dibromomethane	1.29	0.050	mg/kg	1.25	NA	103	75-125	NA	NA	
Dichlorodifluoromethane	1.06	0.050	mg/kg	1.25	NA	85.0	70-130	NA	NA	
Dichlorofluoromethane	1.22	0.050	mg/kg	1.25	NA	97.1	75-125	NA	NA	
Ethyl Ether	1.26	0.050	mg/kg	1.25	NA	101	75-125	NA	NA	
Ethylbenzene	1.29	0.050	mg/kg	1.25	NA	103	75-125	NA	NA	
Hexachlorobutadiene	1.21	0.10	mg/kg	1.25	NA	96.8	75-125	NA	NA	
Isopropylbenzene	1.27	0.12	mg/kg	1.25	NA	101	75-125	NA	NA	
m,p-Xylenes	2.52	0.050	mg/kg	2.50	NA	101	75-125	NA	NA	
Methyl Isobutyl Ketone	1.42	0.25	mg/kg	1.25	NA	114	75-125	NA	NA	
Methylene chloride	1.15	0.25	mg/kg	1.25	NA	92.2	75-125	NA	NA	
Methyl-t-butyl ether	1.32	0.050	mg/kg	1.25	NA	106	75-125	NA	NA	
Naphthalene	1.36	0.12	mg/kg	1.25	NA	109	75-125	NA	NA	
n-Butylbenzene	1.37	0.12	mg/kg	1.25	NA	109	75-125	NA	NA	
n-Propylbenzene	1.32	0.12	mg/kg	1.25	NA	105	75-125	NA	NA	
o-Xylene	1.24	0.050	mg/kg	1.25	NA	99.0	75-125	NA	NA	
sec-Butylbenzene	1.27	0.12	mg/kg	1.25	NA	101	75-125	NA	NA	
Styrene	1.35	0.12	mg/kg	1.25	NA	108	75-125	NA	NA	
tert-Butylbenzene	1.33	0.12	mg/kg	1.25	NA	106	75-125	NA	NA	
Tetrachloroethene	1.12	0.10	mg/kg	1.25	NA	89.8	75-125	NA	NA	
Tetrahydrofuran	1.33	0.25	mg/kg	1.25	NA	107	75-125	NA	NA	
Toluene	1.22	0.050	mg/kg	1.25	NA	97.6	75-125	NA	NA	
trans-1,2-Dichloroethene	1.22	0.050	mg/kg	1.25	NA	97.1	75-125	NA	NA	
trans-1,3-Dichloropropene	1.39	0.050	mg/kg	1.25	NA	111	75-125	NA	NA	
Trichloroethene	1.26	0.050	mg/kg	1.25	NA	100	75-125	NA	NA	
Trichlorofluoromethane	1.21	0.050	mg/kg	1.25	NA	96.4	75-125	NA	NA	
Vinyl chloride	1.26	0.12	mg/kg	1.25	NA	101	70-130	NA	NA	
<i>Surrogate: 1,2-Dichloroethane-d4</i>	25.5		ug/L	25.0	NA	102	80-120			
<i>Surrogate: 4-Bromofluorobenzene</i>	23.7		ug/L	25.0	NA	95.0	80-120			
<i>Surrogate: Dibromofluoromethane</i>	24.2		ug/L	25.0	NA	96.6	80-120			
<i>Surrogate: Toluene-d8</i>	24.3		ug/L	25.0	NA	97.3	80-120			

Braun Intertec-Bloomington  
11001 Hampshire Ave. South  
Bloomington, MN 55438

Client Ref: Holasek Property, Medina MN  
Client Contact: Mr. Jeremy Hansen  
PO Number: BL-10-06413

Report #: 1002579  
Project Mgr: Thomas P. Wagner  
Account ID: BL2004

## Volatile Organic Compounds - Quality Control

### Batch B0E0399 - EPA 5035

#### Laboratory Control Sample Duplicate (B0E0399-BSD1)

Prepared & Analyzed: 05/24/10

Analyte	Result	MRL	Units	Spike Level	Source Result	%REC	%REC Limits	RPD	RPD Limit	Notes
1,1,1,2-Tetrachloroethane	1.24	0.050	mg/kg	1.25	NA	99.2	75-125	3.98	20	
1,1,1-Trichloroethane	1.25	0.050	mg/kg	1.25	NA	99.7	75-125	2.02	20	
1,1,2,2-Tetrachloroethane	1.36	0.050	mg/kg	1.25	NA	109	75-125	2.83	20	
1,1,2-Trichloroethane	1.25	0.050	mg/kg	1.25	NA	99.7	75-125	3.59	20	
1,1,2-Trichlorotrifluoroethane	1.22	0.050	mg/kg	1.25	NA	97.1	75-125	1.87	20	
1,1-Dichloroethane	1.27	0.050	mg/kg	1.25	NA	101	75-125	0.910	20	
1,1-Dichloroethene	1.20	0.050	mg/kg	1.25	NA	96.0	75-125	0.208	20	
1,1-Dichloropropene	1.33	0.050	mg/kg	1.25	NA	106	75-125	3.56	20	
1,2,3-Trichlorobenzene	1.25	0.10	mg/kg	1.25	NA	99.6	75-125	3.08	20	
1,2,3-Trichloropropane	1.25	0.050	mg/kg	1.25	NA	99.9	75-125	0.722	20	
1,2,4-Trichlorobenzene	1.30	0.050	mg/kg	1.25	NA	104	75-125	0.577	20	
1,2,4-Trimethylbenzene	1.37	0.12	mg/kg	1.25	NA	109	75-125	2.14	20	
1,2-Dibromo-3-chloropropane	1.30	0.50	mg/kg	1.25	NA	104	75-125	3.41	20	
1,2-Dibromoethane	1.29	0.050	mg/kg	1.25	NA	103	75-125	3.67	20	
1,2-Dichlorobenzene	1.30	0.050	mg/kg	1.25	NA	104	75-125	2.22	20	
1,2-Dichloroethane	1.26	0.050	mg/kg	1.25	NA	101	75-125	0.596	20	
1,2-Dichloropropane	1.32	0.050	mg/kg	1.25	NA	105	75-125	0.717	20	
1,3,5-Trimethylbenzene	1.34	0.12	mg/kg	1.25	NA	107	75-125	0.936	20	
1,3-Dichlorobenzene	1.30	0.050	mg/kg	1.25	NA	104	75-125	2.10	20	
1,3-Dichloropropane	1.29	0.050	mg/kg	1.25	NA	103	75-125	1.72	20	
1,4-Dichlorobenzene	1.29	0.050	mg/kg	1.25	NA	103	75-125	2.43	20	
2,2-Dichloropropane	1.27	0.050	mg/kg	1.25	NA	102	75-125	0.868	20	
2-Butanone (MEK)	1.24	0.50	mg/kg	1.25	NA	98.9	75-140	8.55	20	
2-Chlorotoluene	1.28	0.12	mg/kg	1.25	NA	103	75-125	0.117	20	
4-Chlorotoluene	1.31	0.12	mg/kg	1.25	NA	104	75-125	1.62	20	
4-Isopropyltoluene	1.35	0.050	mg/kg	1.25	NA	108	75-125	1.19	20	
Acetone	0.968	0.75	mg/kg	1.25	NA	77.2	80-175	30.7	25	
Allyl Chloride	1.26	0.050	mg/kg	1.25	NA	101	75-125	0.875	20	
Benzene	1.29	0.050	mg/kg	1.25	NA	103	75-125	0.194	20	
Bromobenzene	1.28	0.050	mg/kg	1.25	NA	102	75-125	0.0781	20	
Bromochloromethane	1.20	0.050	mg/kg	1.25	NA	96.2	75-125	0.624	20	
Bromodichloromethane	1.29	0.050	mg/kg	1.25	NA	103	75-125	1.42	20	
Bromoform	1.34	0.25	mg/kg	1.25	NA	107	75-125	6.69	20	
Bromomethane	1.14	0.050	mg/kg	1.25	NA	90.8	70-130	2.49	20	
Carbon Tetrachloride	1.25	0.050	mg/kg	1.25	NA	99.9	75-125	0.796	20	
Chlorobenzene	1.26	0.050	mg/kg	1.25	NA	100	75-125	3.65	20	
Chlorodibromomethane	1.31	0.050	mg/kg	1.25	NA	105	75-125	5.01	20	
Chloroethane	1.21	0.050	mg/kg	1.25	NA	96.7	75-125	0.124	20	
Chloroform	1.24	0.050	mg/kg	1.25	NA	99.3	75-125	1.62	20	

Braun Intertec-Bloomington  
11001 Hampshire Ave. South  
Bloomington, MN 55438

Client Ref: Holasek Property, Medina MN  
Client Contact: Mr. Jeremy Hansen  
PO Number: BL-10-06413

Report #: 1002579  
Project Mgr: Thomas P. Wagner  
Account ID: BL2004

## Volatile Organic Compounds - Quality Control

### Batch B0E0399 - EPA 5035

#### Laboratory Control Sample Duplicate (B0E0399-BSD1)

Prepared & Analyzed: 05/24/10

Analyte	Result	MRL	Units	Spike Level	Source Result	%REC	%REC Limits	RPD	RPD Limit	Notes
Chloromethane	1.16	0.050	mg/kg	1.25	NA	92.4	75-125	2.45	20	
cis-1,2-Dichloroethene	1.23	0.050	mg/kg	1.25	NA	98.6	75-125	0.691	20	
cis-1,3-Dichloropropene	1.36	0.050	mg/kg	1.25	NA	108	75-125	1.03	20	
Dibromomethane	1.24	0.050	mg/kg	1.25	NA	99.4	75-125	3.74	20	
Dichlorodifluoromethane	1.04	0.050	mg/kg	1.25	NA	83.0	70-130	2.33	20	
Dichlorofluoromethane	1.23	0.050	mg/kg	1.25	NA	98.2	75-125	1.14	20	
Ethyl Ether	1.25	0.050	mg/kg	1.25	NA	99.6	75-125	1.31	20	
Ethylbenzene	1.33	0.050	mg/kg	1.25	NA	106	75-125	3.28	20	
Hexachlorobutadiene	1.21	0.10	mg/kg	1.25	NA	96.3	75-125	0.496	20	
Isopropylbenzene	1.35	0.12	mg/kg	1.25	NA	108	75-125	5.81	20	
m,p-Xylenes	2.64	0.050	mg/kg	2.50	NA	106	75-125	4.68	20	
Methyl Isobutyl Ketone	1.32	0.25	mg/kg	1.25	NA	105	75-125	7.59	20	
Methylene chloride	1.15	0.25	mg/kg	1.25	NA	91.9	75-125	0.347	20	
Methyl-t-butyl ether	1.31	0.050	mg/kg	1.25	NA	105	75-125	0.645	20	
Naphthalene	1.35	0.12	mg/kg	1.25	NA	108	75-125	1.22	20	
n-Butylbenzene	1.39	0.12	mg/kg	1.25	NA	111	75-125	1.88	20	
n-Propylbenzene	1.34	0.12	mg/kg	1.25	NA	107	75-125	1.84	20	
o-Xylene	1.30	0.050	mg/kg	1.25	NA	104	75-125	4.57	20	
sec-Butylbenzene	1.30	0.12	mg/kg	1.25	NA	103	75-125	1.99	20	
Styrene	1.40	0.12	mg/kg	1.25	NA	112	75-125	3.59	20	
tert-Butylbenzene	1.35	0.12	mg/kg	1.25	NA	108	75-125	1.49	20	
Tetrachloroethene	1.15	0.10	mg/kg	1.25	NA	91.9	75-125	2.33	20	
Tetrahydrofuran	1.28	0.25	mg/kg	1.25	NA	102	75-125	4.17	20	
Toluene	1.28	0.050	mg/kg	1.25	NA	102	75-125	4.20	20	
trans-1,2-Dichloroethene	1.24	0.050	mg/kg	1.25	NA	99.2	75-125	2.11	20	
trans-1,3-Dichloropropene	1.35	0.050	mg/kg	1.25	NA	108	75-125	2.77	20	
Trichloroethene	1.24	0.050	mg/kg	1.25	NA	99.2	75-125	1.08	20	
Trichlorofluoromethane	1.23	0.050	mg/kg	1.25	NA	97.9	75-125	1.60	20	
Vinyl chloride	1.26	0.12	mg/kg	1.25	NA	100	70-130	0.397	20	
<i>Surrogate: 1,2-Dichloroethane-d4</i>	24.9		ug/L	25.0	NA	99.5	80-120			
<i>Surrogate: 4-Bromofluorobenzene</i>	25.4		ug/L	25.0	NA	102	80-120			
<i>Surrogate: Dibromofluoromethane</i>	24.2		ug/L	25.0	NA	96.8	80-120			
<i>Surrogate: Toluene-d8</i>	25.0		ug/L	25.0	NA	100	80-120			

Braun Intertec-Bloomington  
11001 Hampshire Ave. South  
Bloomington, MN 55438

Client Ref: Holasek Property, Medina MN  
Client Contact: Mr. Jeremy Hansen  
PO Number: BL-10-06413

Report #: 1002579  
Project Mgr: Thomas P. Wagner  
Account ID: BL2004

## Volatile Organic Compounds - Quality Control

### Batch B0E0399 - EPA 5035

#### Matrix Spike (B0E0399-MS1)

Source: 1002603-02

Prepared & Analyzed: 05/24/10

Analyte	Result	MRL	Units	Spike Level	Source Result	%REC	%REC Limits	RPD	RPD Limit	Notes
1,1,1,2-Tetrachloroethane	1.64	0.066	mg/kg dry	1.65	ND	99.3	75-125	NA	NA	
1,1,1-Trichloroethane	1.68	0.066	mg/kg dry	1.65	ND	102	75-125	NA	NA	
1,1,2,2-Tetrachloroethane	1.72	0.066	mg/kg dry	1.65	ND	104	75-125	NA	NA	
1,1,2-Trichloroethane	1.66	0.066	mg/kg dry	1.65	ND	101	75-125	NA	NA	
1,1,2-Trichlorotrifluoroethane	1.65	0.066	mg/kg dry	1.65	ND	99.8	75-125	NA	NA	
1,1-Dichloroethane	1.70	0.066	mg/kg dry	1.65	ND	103	75-125	NA	NA	
1,1-Dichloroethene	1.64	0.066	mg/kg dry	1.65	ND	99.2	75-125	NA	NA	
1,1-Dichloropropene	1.77	0.066	mg/kg dry	1.65	ND	107	75-125	NA	NA	
1,2,3-Trichlorobenzene	1.64	0.13	mg/kg dry	1.65	ND	99.6	75-125	NA	NA	
1,2,3-Trichloropropane	1.66	0.066	mg/kg dry	1.65	ND	101	75-125	NA	NA	
1,2,4-Trichlorobenzene	1.68	0.066	mg/kg dry	1.65	ND	102	75-125	NA	NA	
1,2,4-Trimethylbenzene	1.77	0.16	mg/kg dry	1.65	ND	107	75-125	NA	NA	
1,2-Dibromo-3-chloropropane	1.71	0.66	mg/kg dry	1.65	ND	104	75-125	NA	NA	
1,2-Dibromoethane	1.69	0.066	mg/kg dry	1.65	ND	103	75-125	NA	NA	
1,2-Dichlorobenzene	1.66	0.066	mg/kg dry	1.65	ND	101	75-125	NA	NA	
1,2-Dichloroethane	1.67	0.066	mg/kg dry	1.65	ND	101	75-125	NA	NA	
1,2-Dichloropropane	1.76	0.066	mg/kg dry	1.65	ND	107	75-125	NA	NA	
1,3,5-Trimethylbenzene	1.76	0.16	mg/kg dry	1.65	ND	106	75-125	NA	NA	
1,3-Dichlorobenzene	1.65	0.066	mg/kg dry	1.65	ND	100	75-125	NA	NA	
1,3-Dichloropropane	1.71	0.066	mg/kg dry	1.65	ND	104	75-125	NA	NA	
1,4-Dichlorobenzene	1.65	0.066	mg/kg dry	1.65	ND	99.8	75-125	NA	NA	
2,2-Dichloropropane	1.73	0.066	mg/kg dry	1.65	ND	105	75-125	NA	NA	
2-Butanone (MEK)	1.59	0.66	mg/kg dry	1.65	ND	96.6	75-170	NA	NA	
2-Chlorotoluene	1.68	0.16	mg/kg dry	1.65	ND	102	75-125	NA	NA	
4-Chlorotoluene	1.68	0.16	mg/kg dry	1.65	ND	102	75-125	NA	NA	
4-Isopropyltoluene	1.77	0.066	mg/kg dry	1.65	ND	107	75-125	NA	NA	
Acetone	1.88	0.99	mg/kg dry	1.65	ND	114	75-180	NA	NA	
Allyl Chloride	1.68	0.066	mg/kg dry	1.65	ND	102	75-125	NA	NA	
Benzene	1.71	0.066	mg/kg dry	1.65	ND	104	75-125	NA	NA	
Bromobenzene	1.66	0.066	mg/kg dry	1.65	ND	101	75-125	NA	NA	
Bromochloromethane	1.59	0.066	mg/kg dry	1.65	ND	96.3	75-125	NA	NA	
Bromodichloromethane	1.72	0.066	mg/kg dry	1.65	ND	104	75-125	NA	NA	
Bromoform	1.77	0.33	mg/kg dry	1.65	ND	107	75-125	NA	NA	
Bromomethane	1.55	0.066	mg/kg dry	1.65	ND	93.7	70-130	NA	NA	
Carbon Tetrachloride	1.68	0.066	mg/kg dry	1.65	ND	102	75-125	NA	NA	
Chlorobenzene	1.65	0.066	mg/kg dry	1.65	ND	100	75-125	NA	NA	
Chlorodibromomethane	1.70	0.066	mg/kg dry	1.65	ND	103	75-125	NA	NA	
Chloroethane	1.60	0.066	mg/kg dry	1.65	ND	97.2	75-125	NA	NA	
Chloroform	1.65	0.066	mg/kg dry	1.65	ND	100	75-125	NA	NA	

Braun Intertec-Bloomington  
11001 Hampshire Ave. South  
Bloomington, MN 55438

Client Ref: Holasek Property, Medina MN  
Client Contact: Mr. Jeremy Hansen  
PO Number: BL-10-06413

Report #: 1002579  
Project Mgr: Thomas P. Wagner  
Account ID: BL2004

## Volatile Organic Compounds - Quality Control

### Batch B0E0399 - EPA 5035

#### Matrix Spike (B0E0399-MS1)

Source: 1002603-02

Prepared & Analyzed: 05/24/10

Analyte	Result	MRL	Units	Spike Level	Source Result	%REC	%REC Limits	RPD	RPD Limit	Notes
Chloromethane	1.55	0.066	mg/kg dry	1.65	ND	94.1	75-125	NA	NA	
cis-1,2-Dichloroethene	1.64	0.066	mg/kg dry	1.65	ND	99.6	75-125	NA	NA	
cis-1,3-Dichloropropene	1.83	0.066	mg/kg dry	1.65	ND	111	75-125	NA	NA	
Dibromomethane	1.64	0.066	mg/kg dry	1.65	ND	99.7	75-125	NA	NA	
Dichlorodifluoromethane	1.34	0.066	mg/kg dry	1.65	ND	81.4	70-130	NA	NA	
Dichlorofluoromethane	1.62	0.066	mg/kg dry	1.65	ND	98.4	75-125	NA	NA	
Ethyl Ether	1.72	0.066	mg/kg dry	1.65	ND	104	75-125	NA	NA	
Ethylbenzene	1.75	0.066	mg/kg dry	1.65	ND	106	75-125	NA	NA	
Hexachlorobutadiene	1.58	0.13	mg/kg dry	1.65	ND	96.0	75-125	NA	NA	
Isopropylbenzene	1.74	0.16	mg/kg dry	1.65	ND	106	75-125	NA	NA	
m,p-Xylenes	3.46	0.066	mg/kg dry	3.29	ND	105	75-125	NA	NA	
Methyl Isobutyl Ketone	1.88	0.33	mg/kg dry	1.65	ND	114	75-125	NA	NA	
Methylene chloride	1.53	0.33	mg/kg dry	1.65	ND	92.6	75-125	NA	NA	
Methyl-t-butyl ether	1.76	0.066	mg/kg dry	1.65	ND	107	75-125	NA	NA	
Naphthalene	1.73	0.16	mg/kg dry	1.65	ND	105	75-125	NA	NA	
n-Butylbenzene	1.80	0.16	mg/kg dry	1.65	ND	109	75-125	NA	NA	
n-Propylbenzene	1.72	0.16	mg/kg dry	1.65	ND	104	75-125	NA	NA	
o-Xylene	1.69	0.066	mg/kg dry	1.65	ND	103	75-125	NA	NA	
sec-Butylbenzene	1.66	0.16	mg/kg dry	1.65	ND	100	75-125	NA	NA	
Styrene	1.83	0.16	mg/kg dry	1.65	ND	111	75-125	NA	NA	
tert-Butylbenzene	1.76	0.16	mg/kg dry	1.65	ND	107	75-125	NA	NA	
Tetrachloroethene	1.53	0.13	mg/kg dry	1.65	ND	92.9	75-125	NA	NA	
Tetrahydrofuran	1.72	0.33	mg/kg dry	1.65	ND	104	75-125	NA	NA	
Toluene	1.68	0.066	mg/kg dry	1.65	ND	102	75-125	NA	NA	
trans-1,2-Dichloroethene	1.64	0.066	mg/kg dry	1.65	ND	99.6	75-125	NA	NA	
trans-1,3-Dichloropropene	1.82	0.066	mg/kg dry	1.65	ND	110	75-125	NA	NA	
Trichloroethene	1.66	0.066	mg/kg dry	1.65	ND	101	75-125	NA	NA	
Trichlorofluoromethane	1.66	0.066	mg/kg dry	1.65	ND	100	75-125	NA	NA	
Vinyl chloride	1.64	0.16	mg/kg dry	1.65	ND	99.6	70-130	NA	NA	
<i>Surrogate: 1,2-Dichloroethane-d4</i>	25.4		ug/L	25.0	NA	102	80-120			
<i>Surrogate: 4-Bromofluorobenzene</i>	24.8		ug/L	25.0	NA	99.4	80-120			
<i>Surrogate: Dibromofluoromethane</i>	24.9		ug/L	25.0	NA	99.5	80-120			
<i>Surrogate: Toluene-d8</i>	24.6		ug/L	25.0	NA	98.5	80-120			

Braun Intertec-Bloomington  
11001 Hampshire Ave. South  
Bloomington, MN 55438

Client Ref: Holasek Property, Medina MN  
Client Contact: Mr. Jeremy Hansen  
PO Number: BL-10-06413

Report #: 1002579  
Project Mgr: Thomas P. Wagner  
Account ID: BL2004

## Volatile Organic Compounds - Quality Control

### Batch B0E0399 - EPA 5035

#### Matrix Spike Duplicate (B0E0399-MSD1)

Source: 1002603-02

Prepared & Analyzed: 05/24/10

Analyte	Result	MRL	Units	Spike Level	Source Result	%REC	%REC Limits	RPD	RPD Limit	Notes
1,1,1,2-Tetrachloroethane	1.63	0.066	mg/kg dry	1.65	ND	98.8	75-125	0.484	20	
1,1,1-Trichloroethane	1.65	0.066	mg/kg dry	1.65	ND	99.8	75-125	1.86	20	
1,1,2,2-Tetrachloroethane	1.73	0.066	mg/kg dry	1.65	ND	105	75-125	0.534	20	
1,1,2-Trichloroethane	1.67	0.066	mg/kg dry	1.65	ND	101	75-125	0.711	20	
1,1,2-Trichlorotrifluoroethane	1.60	0.066	mg/kg dry	1.65	ND	96.7	75-125	3.13	20	
1,1-Dichloroethane	1.64	0.066	mg/kg dry	1.65	ND	99.6	75-125	3.16	20	
1,1-Dichloroethene	1.61	0.066	mg/kg dry	1.65	ND	97.4	75-125	1.87	20	
1,1-Dichloropropene	1.73	0.066	mg/kg dry	1.65	ND	105	75-125	2.45	20	
1,2,3-Trichlorobenzene	1.64	0.13	mg/kg dry	1.65	ND	99.4	75-125	0.160	20	
1,2,3-Trichloropropane	1.65	0.066	mg/kg dry	1.65	ND	100	75-125	0.516	20	
1,2,4-Trichlorobenzene	1.69	0.066	mg/kg dry	1.65	ND	102	75-125	0.312	20	
1,2,4-Trimethylbenzene	1.72	0.16	mg/kg dry	1.65	ND	104	75-125	3.06	20	
1,2-Dibromo-3-chloropropane	1.59	0.66	mg/kg dry	1.65	ND	96.3	75-125	7.66	20	
1,2-Dibromoethane	1.71	0.066	mg/kg dry	1.65	ND	104	75-125	0.891	20	
1,2-Dichlorobenzene	1.63	0.066	mg/kg dry	1.65	ND	98.8	75-125	2.00	20	
1,2-Dichloroethane	1.65	0.066	mg/kg dry	1.65	ND	100	75-125	1.39	20	
1,2-Dichloropropane	1.74	0.066	mg/kg dry	1.65	ND	105	75-125	1.54	20	
1,3,5-Trimethylbenzene	1.70	0.16	mg/kg dry	1.65	ND	103	75-125	2.97	20	
1,3-Dichlorobenzene	1.61	0.066	mg/kg dry	1.65	ND	97.7	75-125	2.46	20	
1,3-Dichloropropane	1.71	0.066	mg/kg dry	1.65	ND	104	75-125	0.231	20	
1,4-Dichlorobenzene	1.60	0.066	mg/kg dry	1.65	ND	97.2	75-125	2.68	20	
2,2-Dichloropropane	1.67	0.066	mg/kg dry	1.65	ND	101	75-125	3.79	20	
2-Butanone (MEK)	1.77	0.66	mg/kg dry	1.65	ND	107	75-170	10.3	20	
2-Chlorotoluene	1.64	0.16	mg/kg dry	1.65	ND	99.3	75-125	2.78	20	
4-Chlorotoluene	1.65	0.16	mg/kg dry	1.65	ND	100	75-125	1.70	20	
4-Isopropyltoluene	1.70	0.066	mg/kg dry	1.65	ND	103	75-125	3.72	20	
Acetone	1.65	0.99	mg/kg dry	1.65	ND	100	75-180	12.6	25	
Allyl Chloride	1.65	0.066	mg/kg dry	1.65	ND	100	75-125	1.38	20	
Benzene	1.67	0.066	mg/kg dry	1.65	ND	101	75-125	2.42	20	
Bromobenzene	1.62	0.066	mg/kg dry	1.65	ND	98.0	75-125	2.57	20	
Bromochloromethane	1.59	0.066	mg/kg dry	1.65	ND	96.1	75-125	0.207	20	
Bromodichloromethane	1.70	0.066	mg/kg dry	1.65	ND	103	75-125	1.00	20	
Bromoform	1.73	0.33	mg/kg dry	1.65	ND	105	75-125	1.99	20	
Bromomethane	1.59	0.066	mg/kg dry	1.65	ND	96.5	70-130	2.90	20	
Carbon Tetrachloride	1.65	0.066	mg/kg dry	1.65	ND	99.8	75-125	1.90	20	
Chlorobenzene	1.64	0.066	mg/kg dry	1.65	ND	99.2	75-125	0.761	20	
Chlorodibromomethane	1.71	0.066	mg/kg dry	1.65	ND	104	75-125	0.424	20	
Chloroethane	1.57	0.066	mg/kg dry	1.65	ND	95.3	75-125	1.95	20	
Chloroform	1.63	0.066	mg/kg dry	1.65	ND	98.7	75-125	1.41	20	

Braun Intertec-Bloomington  
11001 Hampshire Ave. South  
Bloomington, MN 55438

Client Ref: Holasek Property, Medina MN  
Client Contact: Mr. Jeremy Hansen  
PO Number: BL-10-06413

Report #: 1002579  
Project Mgr: Thomas P. Wagner  
Account ID: BL2004

## Volatile Organic Compounds - Quality Control

### Batch B0E0399 - EPA 5035

#### Matrix Spike Duplicate (B0E0399-MSD1)

Source: 1002603-02

Prepared & Analyzed: 05/24/10

Analyte	Result	MRL	Units	Spike Level	Source Result	%REC	%REC Limits	RPD	RPD Limit	Notes
Chloromethane	1.50	0.066	mg/kg dry	1.65	ND	91.1	75-125	3.28	20	
cis-1,2-Dichloroethene	1.62	0.066	mg/kg dry	1.65	ND	98.1	75-125	1.49	20	
cis-1,3-Dichloropropene	1.78	0.066	mg/kg dry	1.65	ND	108	75-125	2.63	20	
Dibromomethane	1.67	0.066	mg/kg dry	1.65	ND	101	75-125	1.79	20	
Dichlorodifluoromethane	1.24	0.066	mg/kg dry	1.65	ND	75.1	70-130	8.06	20	
Dichlorofluoromethane	1.62	0.066	mg/kg dry	1.65	ND	98.0	75-125	0.366	20	
Ethyl Ether	1.71	0.066	mg/kg dry	1.65	ND	104	75-125	0.652	20	
Ethylbenzene	1.73	0.066	mg/kg dry	1.65	ND	105	75-125	1.10	20	
Hexachlorobutadiene	1.60	0.13	mg/kg dry	1.65	ND	96.8	75-125	0.787	20	
Isopropylbenzene	1.71	0.16	mg/kg dry	1.65	ND	104	75-125	1.60	20	
m,p-Xylenes	3.40	0.066	mg/kg dry	3.29	ND	103	75-125	1.63	20	
Methyl Isobutyl Ketone	1.89	0.33	mg/kg dry	1.65	ND	115	75-125	0.769	20	
Methylene chloride	1.56	0.33	mg/kg dry	1.65	ND	94.7	75-125	2.22	20	
Methyl-t-butyl ether	1.76	0.066	mg/kg dry	1.65	ND	106	75-125	0.524	20	
Naphthalene	1.75	0.16	mg/kg dry	1.65	ND	106	75-125	1.17	20	
n-Butylbenzene	1.75	0.16	mg/kg dry	1.65	ND	106	75-125	3.04	20	
n-Propylbenzene	1.70	0.16	mg/kg dry	1.65	ND	103	75-125	1.54	20	
o-Xylene	1.68	0.066	mg/kg dry	1.65	ND	102	75-125	0.663	20	
sec-Butylbenzene	1.62	0.16	mg/kg dry	1.65	ND	98.1	75-125	2.41	20	
Styrene	1.80	0.16	mg/kg dry	1.65	ND	109	75-125	1.63	20	
tert-Butylbenzene	1.71	0.16	mg/kg dry	1.65	ND	103	75-125	3.08	20	
Tetrachloroethene	1.52	0.13	mg/kg dry	1.65	ND	92.2	75-125	0.690	20	
Tetrahydrofuran	1.64	0.33	mg/kg dry	1.65	ND	99.2	75-125	5.10	20	
Toluene	1.65	0.066	mg/kg dry	1.65	ND	100	75-125	1.66	20	
trans-1,2-Dichloroethene	1.59	0.066	mg/kg dry	1.65	ND	96.6	75-125	3.05	20	
trans-1,3-Dichloropropene	1.81	0.066	mg/kg dry	1.65	ND	110	75-125	0.435	20	
Trichloroethene	1.64	0.066	mg/kg dry	1.65	ND	99.3	75-125	1.32	20	
Trichlorofluoromethane	1.60	0.066	mg/kg dry	1.65	ND	97.3	75-125	3.15	20	
Vinyl chloride	1.63	0.16	mg/kg dry	1.65	ND	99.1	70-130	0.442	20	
Surrogate: 1,2-Dichloroethane-d4	25.4		ug/L	25.0	NA	102	80-120			
Surrogate: 4-Bromofluorobenzene	24.7		ug/L	25.0	NA	98.6	80-120			
Surrogate: Dibromofluoromethane	24.3		ug/L	25.0	NA	97.4	80-120			
Surrogate: Toluene-d8	25.0		ug/L	25.0	NA	100	80-120			

Braun Intertec-Bloomington  
11001 Hampshire Ave. South  
Bloomington, MN 55438

Client Ref: Holasek Property, Medina MN  
Client Contact: Mr. Jeremy Hansen  
PO Number: BL-10-06413

Report #: 1002579  
Project Mgr: Thomas P. Wagner  
Account ID: BL2004

## Volatile Organic Compounds - Quality Control

### Batch B0E0400 - EPA 5035

#### Method Blank (B0E0400-BLK1)

Prepared & Analyzed: 05/25/10

Analyte	Result	MRL	Units	Spike Level	Source Result	%REC	%REC Limits	RPD	RPD Limit	Notes
1,1,1,2-Tetrachloroethane	< 0.050	0.050	mg/kg	NA	NA	NA	NA	NA	NA	
1,1,1-Trichloroethane	< 0.050	0.050	mg/kg	NA	NA	NA	NA	NA	NA	
1,1,2,2-Tetrachloroethane	< 0.050	0.050	mg/kg	NA	NA	NA	NA	NA	NA	
1,1,2-Trichloroethane	< 0.050	0.050	mg/kg	NA	NA	NA	NA	NA	NA	
1,1,2-Trichlorotrifluoroethane	< 0.050	0.050	mg/kg	NA	NA	NA	NA	NA	NA	
1,1-Dichloroethane	< 0.050	0.050	mg/kg	NA	NA	NA	NA	NA	NA	
1,1-Dichloroethene	< 0.050	0.050	mg/kg	NA	NA	NA	NA	NA	NA	
1,1-Dichloropropene	< 0.050	0.050	mg/kg	NA	NA	NA	NA	NA	NA	
1,2,3-Trichlorobenzene	< 0.10	0.10	mg/kg	NA	NA	NA	NA	NA	NA	
1,2,3-Trichloropropane	< 0.050	0.050	mg/kg	NA	NA	NA	NA	NA	NA	
1,2,4-Trichlorobenzene	< 0.050	0.050	mg/kg	NA	NA	NA	NA	NA	NA	
1,2,4-Trimethylbenzene	< 0.12	0.12	mg/kg	NA	NA	NA	NA	NA	NA	
1,2-Dibromo-3-chloropropane	< 0.50	0.50	mg/kg	NA	NA	NA	NA	NA	NA	
1,2-Dibromoethane	< 0.050	0.050	mg/kg	NA	NA	NA	NA	NA	NA	
1,2-Dichlorobenzene	< 0.050	0.050	mg/kg	NA	NA	NA	NA	NA	NA	
1,2-Dichloroethane	< 0.050	0.050	mg/kg	NA	NA	NA	NA	NA	NA	
1,2-Dichloropropane	< 0.050	0.050	mg/kg	NA	NA	NA	NA	NA	NA	
1,3,5-Trimethylbenzene	< 0.12	0.12	mg/kg	NA	NA	NA	NA	NA	NA	
1,3-Dichlorobenzene	< 0.050	0.050	mg/kg	NA	NA	NA	NA	NA	NA	
1,3-Dichloropropane	< 0.050	0.050	mg/kg	NA	NA	NA	NA	NA	NA	
1,4-Dichlorobenzene	< 0.050	0.050	mg/kg	NA	NA	NA	NA	NA	NA	
2,2-Dichloropropane	< 0.050	0.050	mg/kg	NA	NA	NA	NA	NA	NA	
2-Butanone (MEK)	< 0.50	0.50	mg/kg	NA	NA	NA	NA	NA	NA	
2-Chlorotoluene	< 0.12	0.12	mg/kg	NA	NA	NA	NA	NA	NA	
4-Chlorotoluene	< 0.12	0.12	mg/kg	NA	NA	NA	NA	NA	NA	
4-Isopropyltoluene	< 0.050	0.050	mg/kg	NA	NA	NA	NA	NA	NA	
Acetone	< 0.75	0.75	mg/kg	NA	NA	NA	NA	NA	NA	
Allyl Chloride	< 0.050	0.050	mg/kg	NA	NA	NA	NA	NA	NA	
Benzene	< 0.050	0.050	mg/kg	NA	NA	NA	NA	NA	NA	
Bromobenzene	< 0.050	0.050	mg/kg	NA	NA	NA	NA	NA	NA	
Bromochloromethane	< 0.050	0.050	mg/kg	NA	NA	NA	NA	NA	NA	
Bromodichloromethane	< 0.050	0.050	mg/kg	NA	NA	NA	NA	NA	NA	
Bromoform	< 0.25	0.25	mg/kg	NA	NA	NA	NA	NA	NA	
Bromomethane	< 0.050	0.050	mg/kg	NA	NA	NA	NA	NA	NA	
Carbon Tetrachloride	< 0.050	0.050	mg/kg	NA	NA	NA	NA	NA	NA	
Chlorobenzene	< 0.050	0.050	mg/kg	NA	NA	NA	NA	NA	NA	
Chlorodibromomethane	< 0.050	0.050	mg/kg	NA	NA	NA	NA	NA	NA	
Chloroethane	< 0.050	0.050	mg/kg	NA	NA	NA	NA	NA	NA	
Chloroform	< 0.050	0.050	mg/kg	NA	NA	NA	NA	NA	NA	

Braun Intertec-Bloomington  
11001 Hampshire Ave. South  
Bloomington, MN 55438

Client Ref: Holasek Property, Medina MN  
Client Contact: Mr. Jeremy Hansen  
PO Number: BL-10-06413

Report #: 1002579  
Project Mgr: Thomas P. Wagner  
Account ID: BL2004

## Volatile Organic Compounds - Quality Control

### Batch B0E0400 - EPA 5035

#### Method Blank (B0E0400-BLK1)

Prepared & Analyzed: 05/25/10

Analyte	Result	MRL	Units	Spike Level	Source Result	%REC	%REC Limits	RPD	RPD Limit	Notes
Chloromethane	< 0.050	0.050	mg/kg	NA	NA	NA	NA	NA	NA	
cis-1,2-Dichloroethene	< 0.050	0.050	mg/kg	NA	NA	NA	NA	NA	NA	
cis-1,3-Dichloropropene	< 0.050	0.050	mg/kg	NA	NA	NA	NA	NA	NA	
Dibromomethane	< 0.050	0.050	mg/kg	NA	NA	NA	NA	NA	NA	
Dichlorodifluoromethane	< 0.050	0.050	mg/kg	NA	NA	NA	NA	NA	NA	
Dichlorofluoromethane	< 0.050	0.050	mg/kg	NA	NA	NA	NA	NA	NA	
Ethyl Ether	< 0.050	0.050	mg/kg	NA	NA	NA	NA	NA	NA	
Ethylbenzene	< 0.050	0.050	mg/kg	NA	NA	NA	NA	NA	NA	
Hexachlorobutadiene	< 0.10	0.10	mg/kg	NA	NA	NA	NA	NA	NA	
Isopropylbenzene	< 0.12	0.12	mg/kg	NA	NA	NA	NA	NA	NA	
m,p-Xylenes	< 0.050	0.050	mg/kg	NA	NA	NA	NA	NA	NA	
Methyl Isobutyl Ketone	< 0.25	0.25	mg/kg	NA	NA	NA	NA	NA	NA	
Methylene chloride	< 0.25	0.25	mg/kg	NA	NA	NA	NA	NA	NA	
Methyl-t-butyl ether	< 0.050	0.050	mg/kg	NA	NA	NA	NA	NA	NA	
Naphthalene	< 0.12	0.12	mg/kg	NA	NA	NA	NA	NA	NA	
n-Butylbenzene	< 0.12	0.12	mg/kg	NA	NA	NA	NA	NA	NA	
n-Propylbenzene	< 0.12	0.12	mg/kg	NA	NA	NA	NA	NA	NA	
o-Xylene	< 0.050	0.050	mg/kg	NA	NA	NA	NA	NA	NA	
sec-Butylbenzene	< 0.12	0.12	mg/kg	NA	NA	NA	NA	NA	NA	
Styrene	< 0.12	0.12	mg/kg	NA	NA	NA	NA	NA	NA	
tert-Butylbenzene	< 0.12	0.12	mg/kg	NA	NA	NA	NA	NA	NA	
Tetrachloroethene	< 0.10	0.10	mg/kg	NA	NA	NA	NA	NA	NA	
Tetrahydrofuran	< 0.25	0.25	mg/kg	NA	NA	NA	NA	NA	NA	
Toluene	< 0.050	0.050	mg/kg	NA	NA	NA	NA	NA	NA	
trans-1,2-Dichloroethene	< 0.050	0.050	mg/kg	NA	NA	NA	NA	NA	NA	
trans-1,3-Dichloropropene	< 0.050	0.050	mg/kg	NA	NA	NA	NA	NA	NA	
Trichloroethene	< 0.050	0.050	mg/kg	NA	NA	NA	NA	NA	NA	
Trichlorofluoromethane	< 0.050	0.050	mg/kg	NA	NA	NA	NA	NA	NA	
Vinyl chloride	< 0.12	0.12	mg/kg	NA	NA	NA	NA	NA	NA	
<i>Surrogate: 1,2-Dichloroethane-d4</i>	<i>26.0</i>		<i>ug/L</i>	<i>25.0</i>	<i>NA</i>	<i>104</i>	<i>80-120</i>			
<i>Surrogate: 4-Bromofluorobenzene</i>	<i>23.1</i>		<i>ug/L</i>	<i>25.0</i>	<i>NA</i>	<i>92.5</i>	<i>80-120</i>			
<i>Surrogate: Dibromofluoromethane</i>	<i>24.9</i>		<i>ug/L</i>	<i>25.0</i>	<i>NA</i>	<i>99.8</i>	<i>80-120</i>			
<i>Surrogate: Toluene-d8</i>	<i>24.7</i>		<i>ug/L</i>	<i>25.0</i>	<i>NA</i>	<i>98.8</i>	<i>80-120</i>			

Braun Intertec-Bloomington  
11001 Hampshire Ave. South  
Bloomington, MN 55438

Client Ref: Holasek Property, Medina MN  
Client Contact: Mr. Jeremy Hansen  
PO Number: BL-10-06413

Report #: 1002579  
Project Mgr: Thomas P. Wagner  
Account ID: BL2004

## Volatile Organic Compounds - Quality Control

### Batch B0E0400 - EPA 5035

#### Laboratory Control Sample (B0E0400-BS1)

Prepared & Analyzed: 05/25/10

Analyte	Result	MRL	Units	Spike Level	Source Result	%REC	%REC Limits	RPD	RPD Limit	Notes
1,1,1,2-Tetrachloroethane	1.22	0.050	mg/kg	1.25	NA	97.2	75-125	NA	NA	
1,1,1-Trichloroethane	1.27	0.050	mg/kg	1.25	NA	101	75-125	NA	NA	
1,1,2,2-Tetrachloroethane	1.27	0.050	mg/kg	1.25	NA	101	75-125	NA	NA	
1,1,2-Trichloroethane	1.19	0.050	mg/kg	1.25	NA	94.9	75-125	NA	NA	
1,1,2-Trichlorotrifluoroethane	1.20	0.050	mg/kg	1.25	NA	96.1	75-125	NA	NA	
1,1-Dichloroethane	1.23	0.050	mg/kg	1.25	NA	98.2	75-125	NA	NA	
1,1-Dichloroethene	1.19	0.050	mg/kg	1.25	NA	95.1	75-125	NA	NA	
1,1-Dichloropropene	1.28	0.050	mg/kg	1.25	NA	102	75-125	NA	NA	
1,2,3-Trichlorobenzene	1.25	0.10	mg/kg	1.25	NA	100	75-125	NA	NA	
1,2,3-Trichloropropane	1.24	0.050	mg/kg	1.25	NA	98.9	75-125	NA	NA	
1,2,4-Trichlorobenzene	1.30	0.050	mg/kg	1.25	NA	103	75-125	NA	NA	
1,2,4-Trimethylbenzene	1.32	0.12	mg/kg	1.25	NA	106	75-125	NA	NA	
1,2-Dibromo-3-chloropropane	1.26	0.50	mg/kg	1.25	NA	101	75-125	NA	NA	
1,2-Dibromoethane	1.25	0.050	mg/kg	1.25	NA	99.8	75-125	NA	NA	
1,2-Dichlorobenzene	1.26	0.050	mg/kg	1.25	NA	100	75-125	NA	NA	
1,2-Dichloroethane	1.28	0.050	mg/kg	1.25	NA	102	75-125	NA	NA	
1,2-Dichloropropane	1.27	0.050	mg/kg	1.25	NA	102	75-125	NA	NA	
1,3,5-Trimethylbenzene	1.32	0.12	mg/kg	1.25	NA	105	75-125	NA	NA	
1,3-Dichlorobenzene	1.26	0.050	mg/kg	1.25	NA	100	75-125	NA	NA	
1,3-Dichloropropane	1.23	0.050	mg/kg	1.25	NA	98.4	75-125	NA	NA	
1,4-Dichlorobenzene	1.22	0.050	mg/kg	1.25	NA	97.7	75-125	NA	NA	
2,2-Dichloropropane	1.24	0.050	mg/kg	1.25	NA	99.3	75-125	NA	NA	
2-Butanone (MEK)	1.07	0.50	mg/kg	1.25	NA	85.6	75-140	NA	NA	
2-Chlorotoluene	1.27	0.12	mg/kg	1.25	NA	101	75-125	NA	NA	
4-Chlorotoluene	1.28	0.12	mg/kg	1.25	NA	103	75-125	NA	NA	
4-Isopropyltoluene	1.31	0.050	mg/kg	1.25	NA	105	75-125	NA	NA	
Acetone	1.11	0.75	mg/kg	1.25	NA	88.5	80-175	NA	NA	
Allyl Chloride	1.22	0.050	mg/kg	1.25	NA	97.6	75-125	NA	NA	
Benzene	1.24	0.050	mg/kg	1.25	NA	99.2	75-125	NA	NA	
Bromobenzene	1.25	0.050	mg/kg	1.25	NA	100	75-125	NA	NA	
Bromochloromethane	1.23	0.050	mg/kg	1.25	NA	98.1	75-125	NA	NA	
Bromodichloromethane	1.30	0.050	mg/kg	1.25	NA	104	75-125	NA	NA	
Bromoform	1.26	0.25	mg/kg	1.25	NA	101	75-125	NA	NA	
Bromomethane	1.18	0.050	mg/kg	1.25	NA	94.5	70-130	NA	NA	
Carbon Tetrachloride	1.30	0.050	mg/kg	1.25	NA	104	75-125	NA	NA	
Chlorobenzene	1.21	0.050	mg/kg	1.25	NA	96.5	75-125	NA	NA	
Chlorodibromomethane	1.29	0.050	mg/kg	1.25	NA	103	75-125	NA	NA	
Chloroethane	1.19	0.050	mg/kg	1.25	NA	95.0	75-125	NA	NA	
Chloroform	1.25	0.050	mg/kg	1.25	NA	99.6	75-125	NA	NA	

Braun Intertec-Bloomington  
11001 Hampshire Ave. South  
Bloomington, MN 55438

Client Ref: Holasek Property, Medina MN  
Client Contact: Mr. Jeremy Hansen  
PO Number: BL-10-06413

Report #: 1002579  
Project Mgr: Thomas P. Wagner  
Account ID: BL2004

## Volatile Organic Compounds - Quality Control

### Batch B0E0400 - EPA 5035

#### Laboratory Control Sample (B0E0400-BS1)

Prepared & Analyzed: 05/25/10

Analyte	Result	MRL	Units	Spike Level	Source Result	%REC	%REC Limits	RPD	RPD Limit	Notes
Chloromethane	1.20	0.050	mg/kg	1.25	NA	96.2	75-125	NA	NA	
cis-1,2-Dichloroethene	1.21	0.050	mg/kg	1.25	NA	96.8	75-125	NA	NA	
cis-1,3-Dichloropropene	1.32	0.050	mg/kg	1.25	NA	105	75-125	NA	NA	
Dibromomethane	1.27	0.050	mg/kg	1.25	NA	102	75-125	NA	NA	
Dichlorodifluoromethane	1.04	0.050	mg/kg	1.25	NA	82.7	70-130	NA	NA	
Dichlorofluoromethane	1.23	0.050	mg/kg	1.25	NA	98.5	75-125	NA	NA	
Ethyl Ether	1.24	0.050	mg/kg	1.25	NA	98.8	75-125	NA	NA	
Ethylbenzene	1.30	0.050	mg/kg	1.25	NA	103	75-125	NA	NA	
Hexachlorobutadiene	1.22	0.10	mg/kg	1.25	NA	97.0	75-125	NA	NA	
Isopropylbenzene	1.28	0.12	mg/kg	1.25	NA	102	75-125	NA	NA	
m,p-Xylenes	2.50	0.050	mg/kg	2.50	NA	100	75-125	NA	NA	
Methyl Isobutyl Ketone	1.32	0.25	mg/kg	1.25	NA	105	75-125	NA	NA	
Methylene chloride	1.13	0.25	mg/kg	1.25	NA	90.4	75-125	NA	NA	
Methyl-t-butyl ether	1.27	0.050	mg/kg	1.25	NA	101	75-125	NA	NA	
Naphthalene	1.34	0.12	mg/kg	1.25	NA	107	75-125	NA	NA	
n-Butylbenzene	1.34	0.12	mg/kg	1.25	NA	107	75-125	NA	NA	
n-Propylbenzene	1.29	0.12	mg/kg	1.25	NA	103	75-125	NA	NA	
o-Xylene	1.24	0.050	mg/kg	1.25	NA	99.3	75-125	NA	NA	
sec-Butylbenzene	1.26	0.12	mg/kg	1.25	NA	100	75-125	NA	NA	
Styrene	1.33	0.12	mg/kg	1.25	NA	106	75-125	NA	NA	
tert-Butylbenzene	1.31	0.12	mg/kg	1.25	NA	105	75-125	NA	NA	
Tetrachloroethene	1.21	0.10	mg/kg	1.25	NA	96.5	75-125	NA	NA	
Tetrahydrofuran	1.23	0.25	mg/kg	1.25	NA	98.4	75-125	NA	NA	
Toluene	1.22	0.050	mg/kg	1.25	NA	97.1	75-125	NA	NA	
trans-1,2-Dichloroethene	1.20	0.050	mg/kg	1.25	NA	95.5	75-125	NA	NA	
trans-1,3-Dichloropropene	1.34	0.050	mg/kg	1.25	NA	107	75-125	NA	NA	
Trichloroethene	1.24	0.050	mg/kg	1.25	NA	98.9	75-125	NA	NA	
Trichlorofluoromethane	1.26	0.050	mg/kg	1.25	NA	101	75-125	NA	NA	
Vinyl chloride	1.29	0.12	mg/kg	1.25	NA	103	70-130	NA	NA	
<i>Surrogate: 1,2-Dichloroethane-d4</i>	25.5		ug/L	25.0	NA	102	80-120			
<i>Surrogate: 4-Bromofluorobenzene</i>	24.6		ug/L	25.0	NA	98.6	80-120			
<i>Surrogate: Dibromofluoromethane</i>	25.1		ug/L	25.0	NA	101	80-120			
<i>Surrogate: Toluene-d8</i>	24.1		ug/L	25.0	NA	96.5	80-120			

Braun Intertec-Bloomington  
11001 Hampshire Ave. South  
Bloomington, MN 55438

Client Ref: Holasek Property, Medina MN  
Client Contact: Mr. Jeremy Hansen  
PO Number: BL-10-06413

Report #: 1002579  
Project Mgr: Thomas P. Wagner  
Account ID: BL2004

## Volatile Organic Compounds - Quality Control

### Batch B0E0400 - EPA 5035

#### Laboratory Control Sample Duplicate (B0E0400-BSD1)

Prepared & Analyzed: 05/25/10

Analyte	Result	MRL	Units	Spike Level	Source Result	%REC	%REC Limits	RPD	RPD Limit	Notes
1,1,1,2-Tetrachloroethane	1.24	0.050	mg/kg	1.25	NA	99.4	75-125	2.23	20	
1,1,1-Trichloroethane	1.27	0.050	mg/kg	1.25	NA	101	75-125	0.197	20	
1,1,2,2-Tetrachloroethane	1.22	0.050	mg/kg	1.25	NA	97.3	75-125	4.02	20	
1,1,2-Trichloroethane	1.20	0.050	mg/kg	1.25	NA	95.4	75-125	0.588	20	
1,1,2-Trichlorotrifluoroethane	1.20	0.050	mg/kg	1.25	NA	95.4	75-125	0.708	20	
1,1-Dichloroethane	1.24	0.050	mg/kg	1.25	NA	98.9	75-125	0.729	20	
1,1-Dichloroethene	1.19	0.050	mg/kg	1.25	NA	95.0	75-125	0.126	20	
1,1-Dichloropropene	1.26	0.050	mg/kg	1.25	NA	101	75-125	1.42	20	
1,2,3-Trichlorobenzene	1.20	0.10	mg/kg	1.25	NA	96.1	75-125	4.11	20	
1,2,3-Trichloropropane	1.21	0.050	mg/kg	1.25	NA	96.5	75-125	2.49	20	
1,2,4-Trichlorobenzene	1.25	0.050	mg/kg	1.25	NA	99.5	75-125	3.86	20	
1,2,4-Trimethylbenzene	1.32	0.12	mg/kg	1.25	NA	106	75-125	0.0756	20	
1,2-Dibromo-3-chloropropane	1.17	0.50	mg/kg	1.25	NA	93.7	75-125	7.27	20	
1,2-Dibromoethane	1.22	0.050	mg/kg	1.25	NA	97.2	75-125	2.59	20	
1,2-Dichlorobenzene	1.25	0.050	mg/kg	1.25	NA	100	75-125	0.279	20	
1,2-Dichloroethane	1.24	0.050	mg/kg	1.25	NA	99.3	75-125	2.62	20	
1,2-Dichloropropane	1.27	0.050	mg/kg	1.25	NA	102	75-125	0.236	20	
1,3,5-Trimethylbenzene	1.32	0.12	mg/kg	1.25	NA	105	75-125	0.266	20	
1,3-Dichlorobenzene	1.25	0.050	mg/kg	1.25	NA	99.5	75-125	0.879	20	
1,3-Dichloropropane	1.21	0.050	mg/kg	1.25	NA	97.0	75-125	1.47	20	
1,4-Dichlorobenzene	1.22	0.050	mg/kg	1.25	NA	97.8	75-125	0.0408	20	
2,2-Dichloropropane	1.24	0.050	mg/kg	1.25	NA	98.7	75-125	0.565	20	
2-Butanone (MEK)	0.956	0.50	mg/kg	1.25	NA	76.3	75-140	11.5	20	
2-Chlorotoluene	1.25	0.12	mg/kg	1.25	NA	100	75-125	1.15	20	
4-Chlorotoluene	1.27	0.12	mg/kg	1.25	NA	102	75-125	0.821	20	
4-Isopropyltoluene	1.30	0.050	mg/kg	1.25	NA	104	75-125	0.841	20	
Acetone	1.01	0.75	mg/kg	1.25	NA	80.8	80-175	9.01	25	
Allyl Chloride	1.21	0.050	mg/kg	1.25	NA	96.8	75-125	0.821	20	
Benzene	1.26	0.050	mg/kg	1.25	NA	101	75-125	1.76	20	
Bromobenzene	1.23	0.050	mg/kg	1.25	NA	98.2	75-125	1.77	20	
Bromochloromethane	1.20	0.050	mg/kg	1.25	NA	95.7	75-125	2.47	20	
Bromodichloromethane	1.30	0.050	mg/kg	1.25	NA	103	75-125	0.654	20	
Bromoform	1.26	0.25	mg/kg	1.25	NA	100	75-125	0.754	20	
Bromomethane	1.13	0.050	mg/kg	1.25	NA	90.3	70-130	4.45	20	
Carbon Tetrachloride	1.30	0.050	mg/kg	1.25	NA	104	75-125	0.269	20	
Chlorobenzene	1.23	0.050	mg/kg	1.25	NA	98.5	75-125	2.05	20	
Chlorodibromomethane	1.29	0.050	mg/kg	1.25	NA	103	75-125	0.233	20	
Chloroethane	1.17	0.050	mg/kg	1.25	NA	93.1	75-125	2.04	20	
Chloroform	1.26	0.050	mg/kg	1.25	NA	101	75-125	1.39	20	

Braun Intertec-Bloomington  
11001 Hampshire Ave. South  
Bloomington, MN 55438

Client Ref: Holasek Property, Medina MN  
Client Contact: Mr. Jeremy Hansen  
PO Number: BL-10-06413

Report #: 1002579  
Project Mgr: Thomas P. Wagner  
Account ID: BL2004

## Volatile Organic Compounds - Quality Control

### Batch B0E0400 - EPA 5035

#### Laboratory Control Sample Duplicate (B0E0400-BSD1)

Prepared & Analyzed: 05/25/10

Analyte	Result	MRL	Units	Spike Level	Source Result	%REC	%REC Limits	RPD	RPD Limit	Notes
Chloromethane	1.19	0.050	mg/kg	1.25	NA	95.3	75-125	0.876	20	
cis-1,2-Dichloroethene	1.23	0.050	mg/kg	1.25	NA	97.9	75-125	1.11	20	
cis-1,3-Dichloropropene	1.30	0.050	mg/kg	1.25	NA	104	75-125	1.03	20	
Dibromomethane	1.22	0.050	mg/kg	1.25	NA	97.2	75-125	4.57	20	
Dichlorodifluoromethane	1.07	0.050	mg/kg	1.25	NA	85.2	70-130	3.00	20	
Dichlorofluoromethane	1.21	0.050	mg/kg	1.25	NA	96.6	75-125	1.92	20	
Ethyl Ether	1.17	0.050	mg/kg	1.25	NA	93.6	75-125	5.40	20	
Ethylbenzene	1.31	0.050	mg/kg	1.25	NA	104	75-125	0.883	20	
Hexachlorobutadiene	1.16	0.10	mg/kg	1.25	NA	92.9	75-125	4.33	20	
Isopropylbenzene	1.30	0.12	mg/kg	1.25	NA	104	75-125	1.86	20	
m,p-Xylenes	2.57	0.050	mg/kg	2.50	NA	103	75-125	2.59	20	
Methyl Isobutyl Ketone	1.23	0.25	mg/kg	1.25	NA	98.3	75-125	6.71	20	
Methylene chloride	1.14	0.25	mg/kg	1.25	NA	90.8	75-125	0.441	20	
Methyl-t-butyl ether	1.22	0.050	mg/kg	1.25	NA	97.3	75-125	4.18	20	
Naphthalene	1.23	0.12	mg/kg	1.25	NA	98.4	75-125	8.21	20	
n-Butylbenzene	1.35	0.12	mg/kg	1.25	NA	108	75-125	0.445	20	
n-Propylbenzene	1.28	0.12	mg/kg	1.25	NA	102	75-125	0.932	20	
o-Xylene	1.27	0.050	mg/kg	1.25	NA	101	75-125	2.07	20	
sec-Butylbenzene	1.26	0.12	mg/kg	1.25	NA	101	75-125	0.278	20	
Styrene	1.34	0.12	mg/kg	1.25	NA	107	75-125	1.12	20	
tert-Butylbenzene	1.31	0.12	mg/kg	1.25	NA	105	75-125	0.190	20	
Tetrachloroethene	1.37	0.10	mg/kg	1.25	NA	109	75-125	12.3	20	
Tetrahydrofuran	1.10	0.25	mg/kg	1.25	NA	87.7	75-125	11.6	20	
Toluene	1.24	0.050	mg/kg	1.25	NA	98.8	75-125	1.75	20	
trans-1,2-Dichloroethene	1.19	0.050	mg/kg	1.25	NA	95.0	75-125	0.587	20	
trans-1,3-Dichloropropene	1.33	0.050	mg/kg	1.25	NA	106	75-125	0.674	20	
Trichloroethene	1.26	0.050	mg/kg	1.25	NA	100	75-125	1.48	20	
Trichlorofluoromethane	1.26	0.050	mg/kg	1.25	NA	101	75-125	0.0396	20	
Vinyl chloride	1.30	0.12	mg/kg	1.25	NA	103	70-130	0.542	20	
<i>Surrogate: 1,2-Dichloroethane-d4</i>	25.6		ug/L	25.0	NA	103	80-120			
<i>Surrogate: 4-Bromofluorobenzene</i>	24.4		ug/L	25.0	NA	97.6	80-120			
<i>Surrogate: Dibromofluoromethane</i>	24.6		ug/L	25.0	NA	98.4	80-120			
<i>Surrogate: Toluene-d8</i>	24.3		ug/L	25.0	NA	97.3	80-120			

Braun Intertec-Bloomington  
11001 Hampshire Ave. South  
Bloomington, MN 55438

Client Ref: Holasek Property, Medina MN  
Client Contact: Mr. Jeremy Hansen  
PO Number: BL-10-06413

Report #: 1002579  
Project Mgr: Thomas P. Wagner  
Account ID: BL2004

## Volatile Organic Compounds - Quality Control

### Batch B0E0400 - EPA 5035

#### Matrix Spike (B0E0400-MS1)

Source: 1002541-02RE1

Prepared & Analyzed: 05/25/10

Analyte	Result	MRL	Units	Spike Level	Source Result	%REC	%REC Limits	RPD	RPD Limit	Notes
1,1,1,2-Tetrachloroethane	1.27	0.050	mg/kg	1.25	ND	101	75-125	NA	NA	
1,1,1-Trichloroethane	1.28	0.050	mg/kg	1.25	ND	102	75-125	NA	NA	
1,1,2,2-Tetrachloroethane	1.29	0.050	mg/kg	1.25	ND	103	75-125	NA	NA	
1,1,2-Trichloroethane	1.22	0.050	mg/kg	1.25	ND	97.2	75-125	NA	NA	
1,1,2-Trichlorotrifluoroethane	1.22	0.050	mg/kg	1.25	ND	97.4	75-125	NA	NA	
1,1-Dichloroethane	1.23	0.050	mg/kg	1.25	ND	98.0	75-125	NA	NA	
1,1-Dichloroethene	1.21	0.050	mg/kg	1.25	ND	96.4	75-125	NA	NA	
1,1-Dichloropropene	1.28	0.050	mg/kg	1.25	ND	102	75-125	NA	NA	
1,2,3-Trichlorobenzene	1.28	0.10	mg/kg	1.25	ND	102	75-125	NA	NA	
1,2,3-Trichloropropane	1.28	0.050	mg/kg	1.25	ND	102	75-125	NA	NA	
1,2,4-Trichlorobenzene	1.33	0.050	mg/kg	1.25	ND	106	75-125	NA	NA	
1,2,4-Trimethylbenzene	1.36	0.12	mg/kg	1.25	0.00500	108	75-125	NA	NA	
1,2-Dibromo-3-chloropropane	1.18	0.50	mg/kg	1.25	ND	94.4	75-125	NA	NA	
1,2-Dibromoethane	1.28	0.050	mg/kg	1.25	ND	102	75-125	NA	NA	
1,2-Dichlorobenzene	1.28	0.050	mg/kg	1.25	ND	102	75-125	NA	NA	
1,2-Dichloroethane	1.28	0.050	mg/kg	1.25	ND	102	75-125	NA	NA	
1,2-Dichloropropane	1.29	0.050	mg/kg	1.25	ND	103	75-125	NA	NA	
1,3,5-Trimethylbenzene	1.35	0.12	mg/kg	1.25	ND	108	75-125	NA	NA	
1,3-Dichlorobenzene	1.27	0.050	mg/kg	1.25	ND	101	75-125	NA	NA	
1,3-Dichloropropane	1.26	0.050	mg/kg	1.25	ND	100	75-125	NA	NA	
1,4-Dichlorobenzene	1.26	0.050	mg/kg	1.25	ND	101	75-125	NA	NA	
2,2-Dichloropropane	1.32	0.050	mg/kg	1.25	ND	105	75-125	NA	NA	
2-Butanone (MEK)	1.16	0.50	mg/kg	1.25	ND	92.9	75-170	NA	NA	
2-Chlorotoluene	1.29	0.12	mg/kg	1.25	ND	103	75-125	NA	NA	
4-Chlorotoluene	1.29	0.12	mg/kg	1.25	ND	103	75-125	NA	NA	
4-Isopropyltoluene	1.36	0.050	mg/kg	1.25	ND	108	75-125	NA	NA	
Acetone	1.02	0.75	mg/kg	1.25	ND	81.2	75-180	NA	NA	
Allyl Chloride	1.22	0.050	mg/kg	1.25	ND	97.7	75-125	NA	NA	
Benzene	1.28	0.050	mg/kg	1.25	ND	102	75-125	NA	NA	
Bromobenzene	1.27	0.050	mg/kg	1.25	ND	101	75-125	NA	NA	
Bromochloromethane	1.17	0.050	mg/kg	1.25	ND	93.7	75-125	NA	NA	
Bromodichloromethane	1.33	0.050	mg/kg	1.25	ND	106	75-125	NA	NA	
Bromoform	1.32	0.25	mg/kg	1.25	ND	105	75-125	NA	NA	
Bromomethane	1.21	0.050	mg/kg	1.25	ND	96.5	70-130	NA	NA	
Carbon Tetrachloride	1.34	0.050	mg/kg	1.25	ND	107	75-125	NA	NA	
Chlorobenzene	1.25	0.050	mg/kg	1.25	ND	99.7	75-125	NA	NA	
Chlorodibromomethane	1.32	0.050	mg/kg	1.25	ND	106	75-125	NA	NA	
Chloroethane	1.19	0.050	mg/kg	1.25	ND	94.7	75-125	NA	NA	
Chloroform	1.25	0.050	mg/kg	1.25	ND	99.6	75-125	NA	NA	

Braun Intertec-Bloomington  
11001 Hampshire Ave. South  
Bloomington, MN 55438

Client Ref: Holasek Property, Medina MN  
Client Contact: Mr. Jeremy Hansen  
PO Number: BL-10-06413

Report #: 1002579  
Project Mgr: Thomas P. Wagner  
Account ID: BL2004

## Volatile Organic Compounds - Quality Control

### Batch B0E0400 - EPA 5035

#### Matrix Spike (B0E0400-MS1)

Source: 1002541-02RE1

Prepared & Analyzed: 05/25/10

Analyte	Result	MRL	Units	Spike Level	Source Result	%REC	%REC Limits	RPD	RPD Limit	Notes
Chloromethane	1.20	0.050	mg/kg	1.25	ND	96.1	75-125	NA	NA	
cis-1,2-Dichloroethene	1.22	0.050	mg/kg	1.25	ND	97.6	75-125	NA	NA	
cis-1,3-Dichloropropene	1.35	0.050	mg/kg	1.25	ND	108	75-125	NA	NA	
Dibromomethane	1.29	0.050	mg/kg	1.25	ND	103	75-125	NA	NA	
Dichlorodifluoromethane	1.05	0.050	mg/kg	1.25	ND	83.8	70-130	NA	NA	
Dichlorofluoromethane	1.24	0.050	mg/kg	1.25	ND	98.7	75-125	NA	NA	
Ethyl Ether	1.22	0.050	mg/kg	1.25	ND	97.8	75-125	NA	NA	
Ethylbenzene	1.34	0.050	mg/kg	1.25	ND	107	75-125	NA	NA	
Hexachlorobutadiene	1.30	0.10	mg/kg	1.25	ND	104	75-125	NA	NA	
Isopropylbenzene	1.35	0.12	mg/kg	1.25	ND	108	75-125	NA	NA	
m,p-Xylenes	2.66	0.050	mg/kg	2.50	0.00850	106	75-125	NA	NA	
Methyl Isobutyl Ketone	1.32	0.25	mg/kg	1.25	ND	105	75-125	NA	NA	
Methylene chloride	1.12	0.25	mg/kg	1.25	ND	89.7	75-125	NA	NA	
Methyl-t-butyl ether	1.26	0.050	mg/kg	1.25	ND	101	75-125	NA	NA	
Naphthalene	1.35	0.12	mg/kg	1.25	0.0320	105	75-125	NA	NA	
n-Butylbenzene	1.38	0.12	mg/kg	1.25	ND	111	75-125	NA	NA	
n-Propylbenzene	1.33	0.12	mg/kg	1.25	ND	106	75-125	NA	NA	
o-Xylene	1.31	0.050	mg/kg	1.25	ND	105	75-125	NA	NA	
sec-Butylbenzene	1.28	0.12	mg/kg	1.25	ND	102	75-125	NA	NA	
Styrene	1.38	0.12	mg/kg	1.25	ND	110	75-125	NA	NA	
tert-Butylbenzene	1.36	0.12	mg/kg	1.25	ND	108	75-125	NA	NA	
Tetrachloroethene	1.18	0.10	mg/kg	1.25	ND	94.5	75-125	NA	NA	
Tetrahydrofuran	0.934	0.25	mg/kg	1.25	ND	74.6	75-125	NA	NA	
Toluene	1.27	0.050	mg/kg	1.25	0.0105	100	75-125	NA	NA	
trans-1,2-Dichloroethene	1.20	0.050	mg/kg	1.25	ND	96.1	75-125	NA	NA	
trans-1,3-Dichloropropene	1.39	0.050	mg/kg	1.25	ND	111	75-125	NA	NA	
Trichloroethene	1.27	0.050	mg/kg	1.25	ND	101	75-125	NA	NA	
Trichlorofluoromethane	1.26	0.050	mg/kg	1.25	ND	101	75-125	NA	NA	
Vinyl chloride	1.32	0.12	mg/kg	1.25	ND	105	70-130	NA	NA	
<i>Surrogate: 1,2-Dichloroethane-d4</i>	<i>25.0</i>		<i>ug/L</i>	<i>25.0</i>	<i>NA</i>	<i>99.8</i>	<i>80-120</i>			
<i>Surrogate: 4-Bromofluorobenzene</i>	<i>24.7</i>		<i>ug/L</i>	<i>25.0</i>	<i>NA</i>	<i>98.7</i>	<i>80-120</i>			
<i>Surrogate: Dibromofluoromethane</i>	<i>24.6</i>		<i>ug/L</i>	<i>25.0</i>	<i>NA</i>	<i>98.6</i>	<i>80-120</i>			
<i>Surrogate: Toluene-d8</i>	<i>24.5</i>		<i>ug/L</i>	<i>25.0</i>	<i>NA</i>	<i>98.0</i>	<i>80-120</i>			

Braun Intertec-Bloomington  
11001 Hampshire Ave. South  
Bloomington, MN 55438

Client Ref: Holasek Property, Medina MN  
Client Contact: Mr. Jeremy Hansen  
PO Number: BL-10-06413

Report #: 1002579  
Project Mgr: Thomas P. Wagner  
Account ID: BL2004

## Volatile Organic Compounds - Quality Control

### Batch B0E0400 - EPA 5035

#### Matrix Spike Duplicate (B0E0400-MSD1)

Source: 1002541-02RE1

Prepared & Analyzed: 05/25/10

Analyte	Result	MRL	Units	Spike Level	Source Result	%REC	%REC Limits	RPD	RPD Limit	Notes
1,1,1,2-Tetrachloroethane	1.25	0.050	mg/kg	1.25	ND	100	75-125	0.992	20	
1,1,1-Trichloroethane	1.25	0.050	mg/kg	1.25	ND	100	75-125	2.17	20	
1,1,2,2-Tetrachloroethane	1.22	0.050	mg/kg	1.25	ND	97.7	75-125	5.37	20	
1,1,2-Trichloroethane	1.22	0.050	mg/kg	1.25	ND	97.2	75-125	0.0411	20	
1,1,2-Trichlorotrifluoroethane	1.17	0.050	mg/kg	1.25	ND	93.7	75-125	3.88	20	
1,1-Dichloroethane	1.20	0.050	mg/kg	1.25	ND	95.9	75-125	2.10	20	
1,1-Dichloroethene	1.18	0.050	mg/kg	1.25	ND	94.1	75-125	2.47	20	
1,1-Dichloropropene	1.26	0.050	mg/kg	1.25	ND	101	75-125	1.38	20	
1,2,3-Trichlorobenzene	1.22	0.10	mg/kg	1.25	ND	97.6	75-125	4.36	20	
1,2,3-Trichloropropane	1.27	0.050	mg/kg	1.25	ND	101	75-125	1.02	20	
1,2,4-Trichlorobenzene	1.28	0.050	mg/kg	1.25	ND	102	75-125	4.10	20	
1,2,4-Trimethylbenzene	1.33	0.12	mg/kg	1.25	0.00500	106	75-125	1.75	20	
1,2-Dibromo-3-chloropropane	1.14	0.50	mg/kg	1.25	ND	91.2	75-125	3.44	20	
1,2-Dibromoethane	1.24	0.050	mg/kg	1.25	ND	99.0	75-125	3.14	20	
1,2-Dichlorobenzene	1.24	0.050	mg/kg	1.25	ND	99.2	75-125	3.25	20	
1,2-Dichloroethane	1.25	0.050	mg/kg	1.25	ND	99.5	75-125	2.34	20	
1,2-Dichloropropane	1.27	0.050	mg/kg	1.25	ND	102	75-125	1.48	20	
1,3,5-Trimethylbenzene	1.32	0.12	mg/kg	1.25	ND	105	75-125	2.66	20	
1,3-Dichlorobenzene	1.25	0.050	mg/kg	1.25	ND	100	75-125	1.07	20	
1,3-Dichloropropane	1.23	0.050	mg/kg	1.25	ND	98.4	75-125	1.93	20	
1,4-Dichlorobenzene	1.24	0.050	mg/kg	1.25	ND	98.9	75-125	1.68	20	
2,2-Dichloropropane	1.27	0.050	mg/kg	1.25	ND	101	75-125	3.44	20	
2-Butanone (MEK)	0.960	0.50	mg/kg	1.25	ND	76.7	75-170	19.2	20	
2-Chlorotoluene	1.24	0.12	mg/kg	1.25	ND	99.1	75-125	3.95	20	
4-Chlorotoluene	1.27	0.12	mg/kg	1.25	ND	101	75-125	1.76	20	
4-Isopropyltoluene	1.32	0.050	mg/kg	1.25	ND	105	75-125	2.80	20	
Acetone	0.922	0.75	mg/kg	1.25	ND	73.6	75-180	9.75	25	
Allyl Chloride	1.21	0.050	mg/kg	1.25	ND	96.5	75-125	1.23	20	
Benzene	1.27	0.050	mg/kg	1.25	ND	101	75-125	1.33	20	
Bromobenzene	1.22	0.050	mg/kg	1.25	ND	97.4	75-125	3.66	20	
Bromochloromethane	1.17	0.050	mg/kg	1.25	ND	93.2	75-125	0.555	20	
Bromodichloromethane	1.32	0.050	mg/kg	1.25	ND	105	75-125	1.13	20	
Bromoform	1.28	0.25	mg/kg	1.25	ND	102	75-125	3.24	20	
Bromomethane	1.18	0.050	mg/kg	1.25	ND	94.3	70-130	2.34	20	
Carbon Tetrachloride	1.31	0.050	mg/kg	1.25	ND	105	75-125	1.85	20	
Chlorobenzene	1.23	0.050	mg/kg	1.25	ND	98.5	75-125	1.21	20	
Chlorodibromomethane	1.28	0.050	mg/kg	1.25	ND	102	75-125	3.27	20	
Chloroethane	1.15	0.050	mg/kg	1.25	ND	91.5	75-125	3.47	20	
Chloroform	1.23	0.050	mg/kg	1.25	ND	98.4	75-125	1.17	20	

Braun Intertec-Bloomington  
11001 Hampshire Ave. South  
Bloomington, MN 55438

Client Ref: Holasek Property, Medina MN  
Client Contact: Mr. Jeremy Hansen  
PO Number: BL-10-06413

Report #: 1002579  
Project Mgr: Thomas P. Wagner  
Account ID: BL2004

## Volatile Organic Compounds - Quality Control

### Batch B0E0400 - EPA 5035

#### Matrix Spike Duplicate (B0E0400-MSD1)

Source: 1002541-02RE1

Prepared & Analyzed: 05/25/10

Analyte	Result	MRL	Units	Spike Level	Source Result	%REC	%REC Limits	RPD	RPD Limit	Notes
Chloromethane	1.20	0.050	mg/kg	1.25	ND	96.0	75-125	0.125	20	
cis-1,2-Dichloroethene	1.18	0.050	mg/kg	1.25	ND	93.9	75-125	3.79	20	
cis-1,3-Dichloropropene	1.32	0.050	mg/kg	1.25	ND	105	75-125	2.06	20	
Dibromomethane	1.25	0.050	mg/kg	1.25	ND	100	75-125	2.75	20	
Dichlorodifluoromethane	0.990	0.050	mg/kg	1.25	ND	79.0	70-130	5.88	20	
Dichlorofluoromethane	1.21	0.050	mg/kg	1.25	ND	96.4	75-125	2.41	20	
Ethyl Ether	1.17	0.050	mg/kg	1.25	ND	93.3	75-125	4.76	20	
Ethylbenzene	1.32	0.050	mg/kg	1.25	ND	106	75-125	1.31	20	
Hexachlorobutadiene	1.28	0.10	mg/kg	1.25	ND	102	75-125	1.82	20	
Isopropylbenzene	1.34	0.12	mg/kg	1.25	ND	107	75-125	0.520	20	
m,p-Xylenes	2.59	0.050	mg/kg	2.50	0.00850	103	75-125	2.93	20	
Methyl Isobutyl Ketone	1.29	0.25	mg/kg	1.25	ND	103	75-125	1.99	20	
Methylene chloride	1.11	0.25	mg/kg	1.25	ND	88.5	75-125	1.43	20	
Methyl-t-butyl ether	1.24	0.050	mg/kg	1.25	ND	99.4	75-125	1.48	20	
Naphthalene	1.28	0.12	mg/kg	1.25	0.0320	99.8	75-125	5.35	20	
n-Butylbenzene	1.37	0.12	mg/kg	1.25	ND	109	75-125	1.38	20	
n-Propylbenzene	1.30	0.12	mg/kg	1.25	ND	104	75-125	2.21	20	
o-Xylene	1.29	0.050	mg/kg	1.25	ND	103	75-125	1.19	20	
sec-Butylbenzene	1.25	0.12	mg/kg	1.25	ND	100	75-125	2.37	20	
Styrene	1.37	0.12	mg/kg	1.25	ND	110	75-125	0.762	20	
tert-Butylbenzene	1.32	0.12	mg/kg	1.25	ND	105	75-125	2.99	20	
Tetrachloroethene	1.16	0.10	mg/kg	1.25	ND	92.3	75-125	2.35	20	
Tetrahydrofuran	1.05	0.25	mg/kg	1.25	ND	83.5	75-125	11.3	20	
Toluene	1.25	0.050	mg/kg	1.25	0.0105	99.0	75-125	1.27	20	
trans-1,2-Dichloroethene	1.18	0.050	mg/kg	1.25	ND	94.1	75-125	2.14	20	
trans-1,3-Dichloropropene	1.36	0.050	mg/kg	1.25	ND	108	75-125	2.37	20	
Trichloroethene	1.26	0.050	mg/kg	1.25	ND	101	75-125	0.870	20	
Trichlorofluoromethane	1.24	0.050	mg/kg	1.25	ND	98.7	75-125	1.96	20	
Vinyl chloride	1.32	0.12	mg/kg	1.25	ND	105	70-130	0.228	20	
<i>Surrogate: 1,2-Dichloroethane-d4</i>	24.8		ug/L	25.0	NA	99.4	80-120			
<i>Surrogate: 4-Bromofluorobenzene</i>	24.7		ug/L	25.0	NA	98.9	80-120			
<i>Surrogate: Dibromofluoromethane</i>	24.3		ug/L	25.0	NA	97.2	80-120			
<i>Surrogate: Toluene-d8</i>	24.4		ug/L	25.0	NA	97.8	80-120			

# BRAUN INTERTEC

11001 Hampshire Ave. S.  
Minneapolis, MN 55438  
952.995.2000 Phone  
952.995.2020 Fax

Braun Intertec-Bloomington  
11001 Hampshire Ave. South  
Bloomington, MN 55438

Client Ref: Holasek Property, Medina MN  
Client Contact: Mr. Jeremy Hansen  
PO Number: BL-10-06413

Report #: 1002579  
Project Mgr: Thomas P. Wagner  
Account ID: BL2004

<b>For Braun Intertec Use Only</b> Laboratory Work Order No.  1002579		<b>BRAUN INTERTEC</b> Braun Intertec Corporation 11001 Hampshire Ave. S Minneapolis, MN 55438		<b>REQUEST FOR LABORATORY ANALYTICAL SERVICES</b> Bottle orders and sampling inquiries: labservices@braunintertec.com Phone: 952-995-2600 Fax: 952-995-2601		<b>IMPORTANT</b> Date Results Requested: 5/27/10 Time: RUSH Rush Charges Authorized? Yes No Rush / Quote #		Page 1 of 1  005207		
REPORT RESULTS TO	Contact Name: <u>Jeremy Hansen</u>			Project ID/Name: <u>Holasek Property, Medina, MN</u>			P.O. #/Project #: <u>BL-10-06413</u>			
	Company: <u>Braun-BL</u>			Contact Name: _____			Company: _____			
SEND INVOICE TO	Mailing Address: _____			Address: _____			City, State, Zip: _____			
	Telephone #: _____			Telephone #: _____			Fax #: _____			
E-mail: _____			<b>ANALYSIS REQUESTED</b> (Enter an 'X' in the box below to indicate request)							
<b>Special Instructions and/or Specific Regulatory Requirements:</b> (method, limit of detection, petrofund, reporting units)										
LAB ID#	CLIENT SAMPLE IDENTIFICATION (IDs must be unique)	DATE SAMPLED	TIME SAMPLED	MATRIX/MEDIA	VOLUME/AREA (specify units)	Number of Containers	Metals Field Filtered Y/N	Site Location (State) <u>MN</u> <u>VOCS</u> <u>GRO</u> <u>DRD</u>		FOR LAB USE ONLY
	<u>Mech Trip Blank</u>	<u>5-20-10</u>	<u>-</u>	<u>Mech</u>		<u>1</u>				
	<u>ST-13 (2-4)</u>	<u>5-20-10</u>	<u>1000</u>	<u>Soil</u>		<u>5</u>	X	X	X	
	<u>ST-2 (4-6)</u>	<u>"</u>	<u>1212</u>	<u>"</u>		<u>6</u>	X	X	X	
	<u>ST-2 (12.5)</u>	<u>"</u>	<u>1229</u>	<u>"</u>		<u>6</u>	X	X	X	
	<u>ST-11 (2-4)</u>	<u>"</u>	<u>1357</u>	<u>"</u>		<u>5</u>	X	X	X	
	<u>ST-7 (2-4)</u>	<u>"</u>	<u>1509</u>	<u>"</u>		<u>5</u>	X	X	X	
CHAIN OF CUSTODY		Collected by: (Print) <u>Randy J. Peterson</u>				Collector's Signature: <u>Randy J. Peterson</u>				
		Relinquished by: <u>Randy J. Peterson</u>				Date/Time: <u>5/20/10 16:27</u>		Received by: <u>[Signature]</u>		Date/Time: <u>5/20/2010 16:30</u>
		Relinquished by: _____				Date/Time: _____		Received Contents Not Verified: _____		Date/Time: _____
		Custody Seal Intact <input type="checkbox"/> Yes <input type="checkbox"/> No <input checked="" type="checkbox"/> N/A <input checked="" type="checkbox"/> Hand Delivered by Client						Received Contents Verified: _____		Date/Time: _____
		On Ice <input checked="" type="checkbox"/> Yes <input type="checkbox"/> No						Comments: _____		
		Temp Blank <input checked="" type="checkbox"/> Yes <input type="checkbox"/> No								
		Temp: <u>1.6</u> °C								

Form # CS02-03 F:\Groups\QA-QC\Forms\clientservices\COC-CS02 Effective Date: 10-10-07

Braun Intertec-Bloomington  
11001 Hampshire Ave. South  
Bloomington, MN 55438

Client Ref: Holasek Property, Medina MN  
Client Contact: Mr. Jeremy Hansen  
PO Number: BL-10-06413

Report #: 1002579  
Project Mgr: Thomas P. Wagner  
Account ID: BL2004

Quantitation Report (QT Reviewed)

Data Path : F:\LabData\AgilentGCs\7890\_2\0146\  
Data File : 0071.D  
Signal(s) : FID1A.ch  
Acq On : 27 May 2010 11:47  
Operator : RSS  
Sample : 1002579-02  
Misc :  
ALS Vial : 41 Sample Multiplier: 1

DRO

Integration File: CALIBRATION.e  
Quant Time: May 27 12:55:39 2010  
Quant Method: F:\LabData\AgilentGCs\7890\_2\Methods\DRO\_0146.m  
Quant Title: Area  
QLast Update: Thu May 27 09:31:37 2010  
Response via: Initial Calibration  
Integrator: ChemStation

Volume Inj. :  
Signal Phase :  
Signal Info :



ho  
5/27/10  
RSS

Braun Intertec-Bloomington  
11001 Hampshire Ave. South  
Bloomington, MN 55438

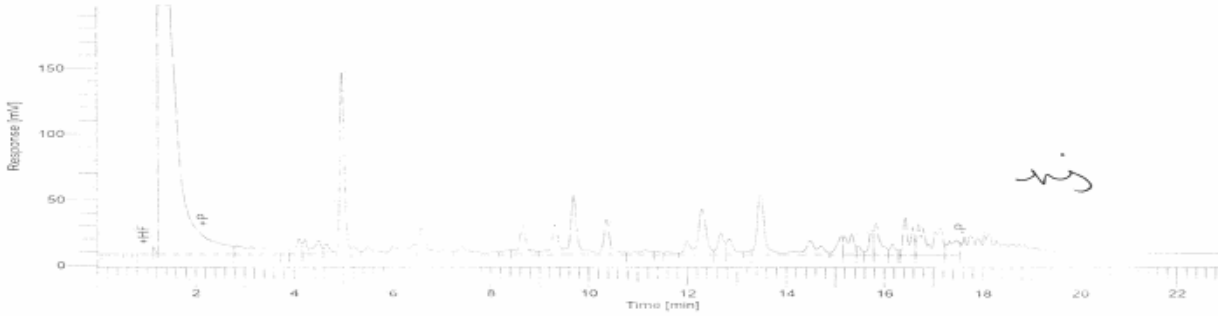
Client Ref: Holasek Property, Medina MN  
Client Contact: Mr. Jeremy Hansen  
PO Number: BL-10-06413

Report #: 1002579  
Project Mgr: Thomas P. Wagner  
Account ID: BL2004

2

```

Software Version : 6.3.0.0445
Reprocess Number : 184003: 4912
Operator : TCuser
Sample Number : 3
AutoSampler : NONE
Instrument Name : HP2
Interface Serial # : 2072574588
Delay Time : 0.00 min
Sampling Rate : 3.1250 pts/s
Sample Volume : 1.000000 uL
Sample Amount : 10.0000
Data Acquisition Time : 5/21/2010 7:14:27 PM
Date : 5/25/2010 8:20:19 AM
Sample Name : 1002579-03
Study :
Rack/Vial : 0/0
Channel : B
A/D mV Range : 1000
End Time : 23.50 min
Area Reject : 1000.000000
Dilution Factor : 10.00
Cycle : 14
Raw Data File : \\Mpls-san01\labdata-voc\VOC\HP2\DATA\0137\0137b112.raw -Modified>
Result File : \\Mpls-san01\labdata-voc\VOC\HP2\DATA\0137\0137b112.rst
Inst Method : \\Mpls-san01\labdata-voc\voc\hp2\meth\pvoc\acqmeth5117 from \\Mpls-san01\labdata-voc\VOC\HP2\DATA\0137\0137b112.raw
Proc Method : \\Mpls-san01\labdata-voc\voc\hp2\meth\gro\0127b.mth from \\Mpls-san01\labdata-voc\VOC\HP2\DATA\0137\0137b112.rst
Calib Method : \\Mpls-san01\labdata-voc\voc\hp2\meth\gro\0127b.mth from \\Mpls-san01\labdata-voc\VOC\HP2\DATA\0137\0137b112.rst
Report Format File : \\Mpls-san01\labdata-voc\voc\hp1\data\gro 3.25.07.rpt
Sequence File : F:\LabData\VOC\VOC\HP2\Data\0137\0137.seq
    
```



## Gasoline Range Organics

GRO/TPH report

Peak #	Time (min)	Method R.T.	Component Name	Final ug/L or mg/kg	Recovery %	Area [uV*sec]	Height	Raw Amount (ng/mL)	Cal. Range	Sample Weight	Footnote
1	9.766	9.766	WGRO	410.105	256.3	6443102	820246	410.105		10.000	

5125  
100

Report stored in ASCII file: \\Mpls-san01\labdata-voc\VOC\HP2\DATA\0137\0137b112.TXT0

Braun Intertec-Bloomington  
11001 Hampshire Ave. South  
Bloomington, MN 55438

Client Ref: Holasek Property, Medina MN  
Client Contact: Mr. Jeremy Hansen  
PO Number: BL-10-06413

Report #: 1002579  
Project Mgr: Thomas P. Wagner  
Account ID: BL2004

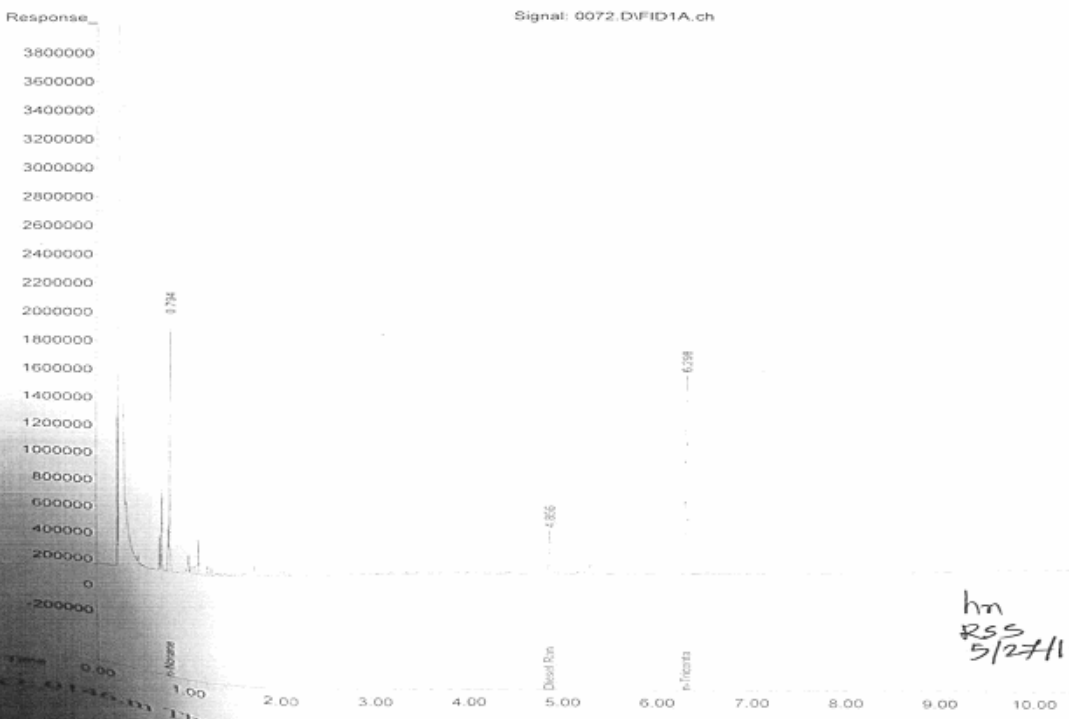
### Quantitation Report (QT Reviewed)

3  
Data Path : F:\LabData\AgilentGCs\7890\_2\0146\  
Data File : 0072.D  
Signal(s) : FID1A.ch  
Acq On : 27 May 2010 12:06  
Operator : RSS  
Sample : 1002579-03  
Misc :  
ALS Vial : 42 Sample Multiplier: 1

DRO

Integration File: CALIBRATION.e  
Quant Time: May 27 12:56:41 2010  
Quant Method : F:\LabData\AgilentGCs\7890\_2\Methods\DRO\_0146.m  
Quant Title : Area  
QLast Update : Thu May 27 09:31:37 2010  
Response via : Initial Calibration  
Integrator: ChemStation

Volume Inj. :  
Signal Phase :  
Signal Info :



hm  
RSS  
5/27/10